



The next-generation

Axis^{EN} Wireless

EN54 fire systems.
More power. Maximum peace of mind.





Advanced Performance. Wireless Versatility.

Looking for a wireless fire safety system you can trust? Look no further than Advanced.

With our versatile Axis EN wireless range, it's easy to install robust fire alarm systems whilst saving crucial time, cost and disruption.

Harnessing the power of proven technology, Advanced wireless systems are scalable, adaptable and reliable – for complete fire safety peace of mind.

Creating a safer future

Contents

Advanced Overview	4
Introducing the Next-Generation Axis EN	6
Axis EN Wireless Versatility	13
Axis EN Wireless Technology	14
Wireless Network Optimiser Technology	15
Responsiveness	15
Mesh Expander Technology	16
Dual-channel Redundant Technology	16
Infrastructure Range	17
Optimised Power Management	17
TauREX Software	18
Axis EN Control Panels	19
Add Axis EN System Diagram	20
Axis EN Wireless Devices	22
AxisGo – The New Single-Loop Fire Panel	26
Axis EN Parts List	28



Advanced – Made in the UK. Trusted around the world

At Advanced, we're committed to creating a safer future. We deliver fire protection and life safety solutions that protect people and property in more than 80 countries across the globe.

Our products are shaped by decades of research and development expertise as well as ongoing investment in new technologies. This ensures they provide years of high performance and reliability – for ultimate peace of mind.

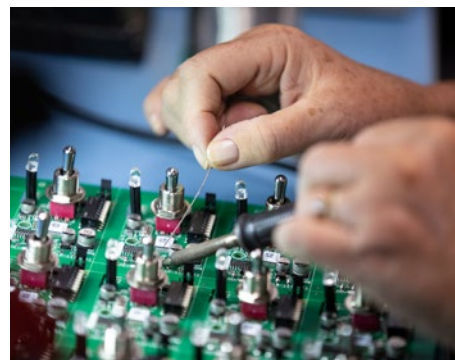
Everything we deliver is rigorously tested and approved to exacting quality standards – which is why Advanced products are trusted by customers the world over and synonymous with quality, performance and ease of use.



Advanced Headquarters, Newcastle, UK

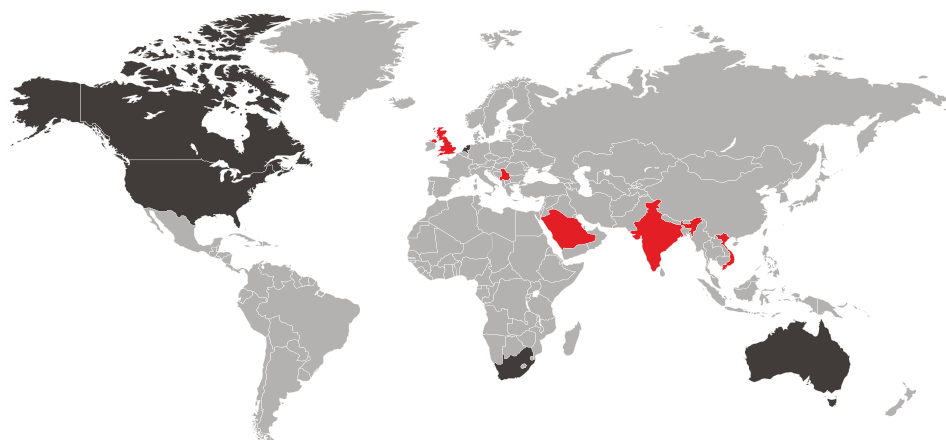
We understand that few fire protection challenges are the same, so as well as our mass-customised ranges, we also offer fully-customised solutions. This flexibility gives you complete control over the functions, format and finish of products to suit your site's unique specification.

We are dedicated to providing excellent service and have an international network of offices and agents to help you access sales support with ease – wherever you are in the world.



In addition, our training and technical services are free of charge to all our direct customers and consistently rated as excellent.

For added reassurance, Advanced is part of the safety sector of FTSE 100 company Halma plc. This global group of life-saving technology companies has a clear purpose to grow a safer, cleaner, healthier future for everyone, every day.



- Advanced & Halma sales representatives
- Strategic and OEM partners
- Distributors and system integrators in key locations worldwide



Landmark Tower, Dubai, UAE



Petronas Refinery, Kuala Lumpur, Malaysia

Axis^{EN} protects...



The Harbourview, Hong Kong, China



The Robinson Club, Ierapetra, Crete



Dubai Hills Estate Business Park, Dubai, UAE



Communications Regulation Commission office, Sofia, Bulgaria

Introducing the next-generation Axis^{EN}

For over a decade, Axis EN has been reliably delivering fire safety peace of mind in buildings across the world.

And while the panels' looks and dependability haven't altered, the technology and software driving them have been constantly evolving – keeping them – and you – one step ahead in a fast-changing fire industry.

And now, we're taking another step forward by bringing you our most important improvements yet...

This is the Axis EN fire system you know and trust but with a host of new features including our simplest ever programming and our fastest processing power to date. And this next-generation Axis EN is even more sustainable too...

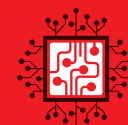
Here, you can discover all the benefits of our latest panels and why choosing Advanced puts you at the forefront of fire safety...



Axis EN fire panels have been certified by FM Approvals, enabling them to carry the FM APPROVED diamond, one of the most prestigious certification marks in the world.

Our most versatile panel

The upgraded Axis EN brings you a sustainable upgrade option for existing systems and a host of other new benefits.



Upgraded processor and memory

Faster performance of power-up, configuration download, system monitoring and notifications.



New loop-driver card

Our MXP-568 loop driver card enables a wider range of features and support for the latest devices.



Improved power supply unit

Easier replacement, improved support for third-party equipment and longer battery life.



Quicker, more intuitive programming

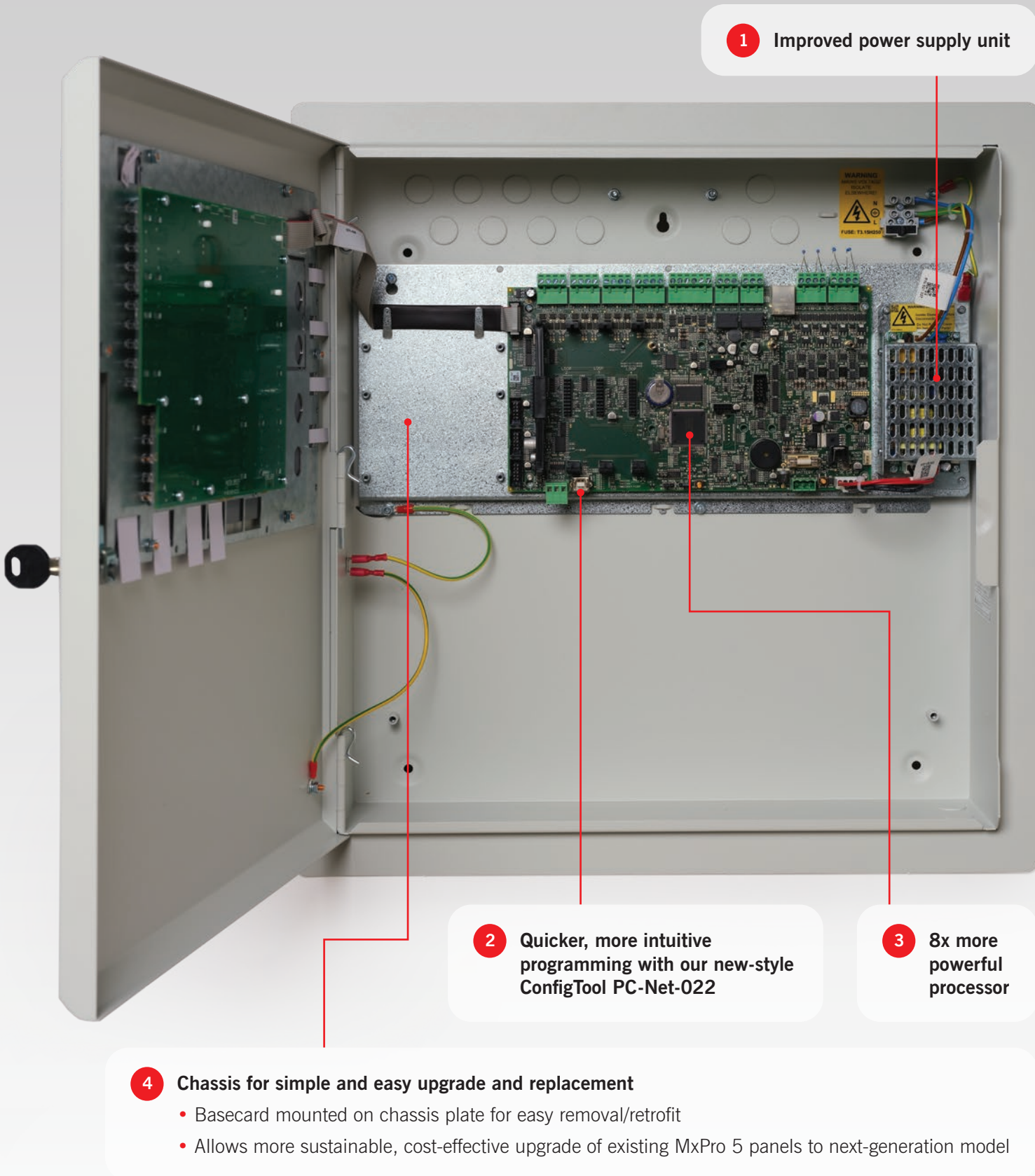
Our new-style ConfigTool provides a much-improved user experience, easier navigation, support for more complex cause and effect programming, a design checker, and much quicker transfer of configuration settings (typically under 30 seconds).



Increased configuration options

Support for more complex cause and effect programming with increased point configuration and enhanced logic, using the latest Windows technology.

New basecard, new advantages



The updated basecards for our 1-loop, 2-loop, 4-loop and 8-loop Axis EN panels provide a host of new benefits, including faster commissioning, a more efficient battery performance and a smoother user experience overall.

Basecard comparison:

Topic title	Previous 'Gen 1' basecard	New 'Gen 2' basecard
1 Power supply unit:	Integrated into basecard	Upgraded and separate from basecard for easier replacement and integration with third-party equipment
Menu navigation:	Limited menu navigation responsiveness	Improvements to menu navigation support quick and easy installation and commissioning
2 Configuration software:	Not forward compatible with next-generation basecard. Uses PC-Net-003 configuration software	Uses PC-Net-022 which has an improved user interface and navigation, including improved cause and effect and backwards compatibility
Download time:	Panel/PC average download time of 4 minutes	Connection to PC is much faster – less than 30 seconds
3 Memory:	Memory size limited to 512KB x 8	Enhanced memory size 1MB x 8 (4 x greater memory capacity) provides improved capabilities and functionality and supports larger fire systems
Number of points:	1000	2000
Input events:	250	2000
Logic terms:		2000
Logic statements:	100	250
Logic lines:		3000
Output group lines:	1150	2000
4 Chassis for simple and easy upgrade and replacement:	Basecard mounted on chassis plate for easy removal/retrofit	Easy replacement of the basecard allows more sustainable, cost-effective upgrade of existing MxPro 5 panels to next-generation model

More power. Maximum peace of mind.

Axis^{EN}

- is our complete solution for customers demanding a versatile, high-performing fire system that's fully approved to EN54 Parts 2 and 4
- combines addressable panels with a versatile and comprehensive range of wired and wireless devices to bring you performance, quality and ease of use
- includes intuitive programming, powerful networking, comprehensive cause and effect and unique diagnostic features that put you in complete control of your fire protection and provide that all-important peace of mind
- is designed to go anywhere you need high quality, reliable and easy-to-use fire detection and control, from mass transportation and industrial complexes to landmark developments, historic buildings and public services.
- offers a reliable, scalable solution, backed up by lifetime technical support.



Axis EN fire panels have been certified by FM Approvals, enabling them to carry the FM APPROVED diamond, one of the most prestigious certification marks in the world.



Easy to install and use

Axis EN is built on Advanced's outstanding pedigree of fire alarm and detection experience. Research and development involved installers, specifiers, consultants and end users across the world, to bring you a range of EN54-approved fire panels that are simple to install, configure and use.

- Easy-fix removable chassis and in-built software make Axis EN fire panels quick and easy to set up
- Powerful networking, extensive configuration options and comprehensive cause and effect put you in complete control
- Intuitive controls and menus, with simple click-and-select programming, for simple and easy commissioning
- Support for intelligent remote terminals, I/O drivers and BMS interfaces make light work of connecting with building management systems
- Our highly rated technical support team can help with advice, tips and training. We also have an extensive collection of 'how to' videos on our YouTube channel.

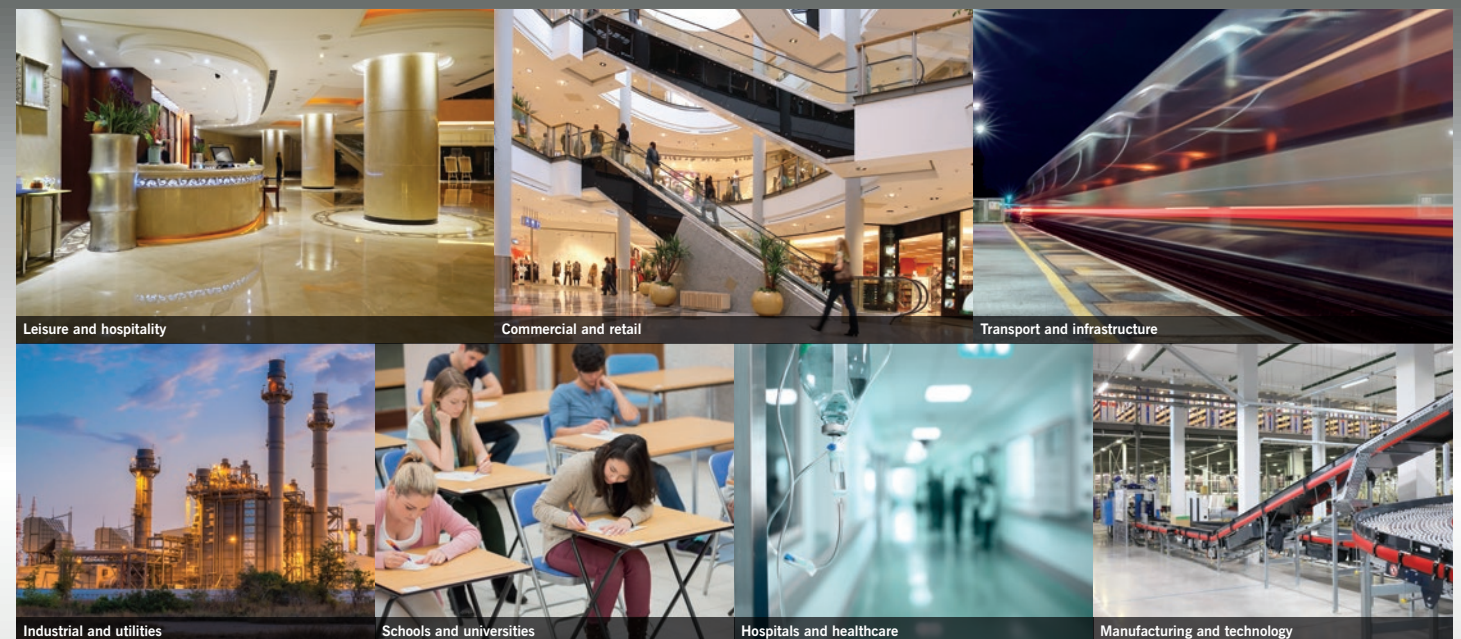


Scalable and flexible

We know that sites can expand, and fire protection requirements evolve over time.

That's why we've designed Axis EN to be scalable and flexible, able to adapt as required with minimal fuss or disruption.

- Standalone one, two, four or eight loop formats so you can choose the panel size that meets your requirements and budget
- Remote display terminals available including TouchControl – our 10"/25.4cm touchscreen with interactive maps and zone plans for use in public reception areas
- Up to 240 devices per loop and an overall capacity of 200,000 devices per network
- Every panel is networkable with up to 200 network nodes and 2,000 fire detection zones
- Versatile, thanks to a comprehensive wired and wireless detector range so you can build a system that meets your current and future needs.



Axis^{EN} Wireless versatility



Packed with premium features

Every Axis EN panel comes with a host of advanced features built in as standard, giving you peace of mind that you won't need to buy expensive add-ons in the future.

- Unique diagnostic features include 'scope on board' to provide readings on the panel from any loop, making it easy to identify and investigate any issues
- Network diagnostic tool prevents fires and faults from being transmitted across the network
- Built-in multimeter measures all voltages and currents across the system, so you can speed up the commissioning process by identifying voltage/current levels in real time
- Every panel includes AlarmCalm false alarm management software to help you minimise unwanted alarms, with 200 programmable false alarm management areas per panel
- Ability to monitor the circuit from any panel or remote terminal and see a complete device history on every panel
- Standard peripherals include direct USB and RS232 PC connections, and peripheral expansion is built in for added peace of mind
- Modular in construction, with mass customisation options including the ability to program your own company logo to appear on the fire panel screen
- 20 built-in, fully programmable LEDs as standard without the need to buy a separate LED zone card
- On-board or optional remote battery temperature sensor ensures optimum operational efficiency and life
- 4 programmable push buttons on the front of the panel for user customisation according to your fire system's needs
- 5,000 event and diagnostic, and 500 fire event log entries, for comprehensive tracking and auditing
- Timed enablement of disabled zones, input and output devices, to program and manage fire system response and reporting.



Powerful, flexible service reporting

Every Axis EN panel includes an inbuilt, easy-to-use, Windows-based service tool which saves you time and money by providing easy, instant access to historic and real-time device data, and shows proof of servicing at a glance.

- Demonstrate proof of servicing, download service reports, inspect the device history and keep track of service schedules
- Customisable data filters make it easy to focus on potential trouble spots and ensure they're checked and tested during servicing
- Predict which devices are becoming contaminated so you can clean/replace them before they cause a false alarm
- Customise reports to show the data you need and export it as PDF, Excel or HTML files makes it easy to prove compliance.



Reliable, intelligent and unobtrusive

- Ensures unprecedented fire detection, performance, scalability and reliability
- Is a powerful and easy-to-configure wireless fire system that meets EN 54 Part 25
- Is engineered to provide outstanding performance and efficiency in all types of installation, regardless of the age, usage or construction of the site
- Meets the needs of both small to medium and larger sites, supporting up to 128 devices on a single translator
- Uses intelligent signal processing across 66 communications channels coupled with mesh expander technology to ensure exceptional system reliability in every environment
- Is energy efficient and environmentally friendly thanks to an innovative electrical design that ensures excellent battery management
- Is flexible and unobtrusive, making it suitable for a wide range of applications
- Is scalable and easy to expand from a single loop to multiple systems on the same site
- Works across thick walls and multiple building levels without requiring complex cable networks – meaning that installation can be completed in hours rather than weeks
- Combines high-performance fire panels and wireless devices with TauREX – a highly intuitive software that provides a simple and intuitive way to install, commission and maintain your Axis EN wireless fire system.



Suitable for a wide range of sites including:

- Commercial properties
- Residential buildings
- Highrise buildings
- Healthcare and education
- Hospitality and catering facilities
- Public and government buildings
- Schools and universities
- Historic and landmark buildings
- Temporary event sites



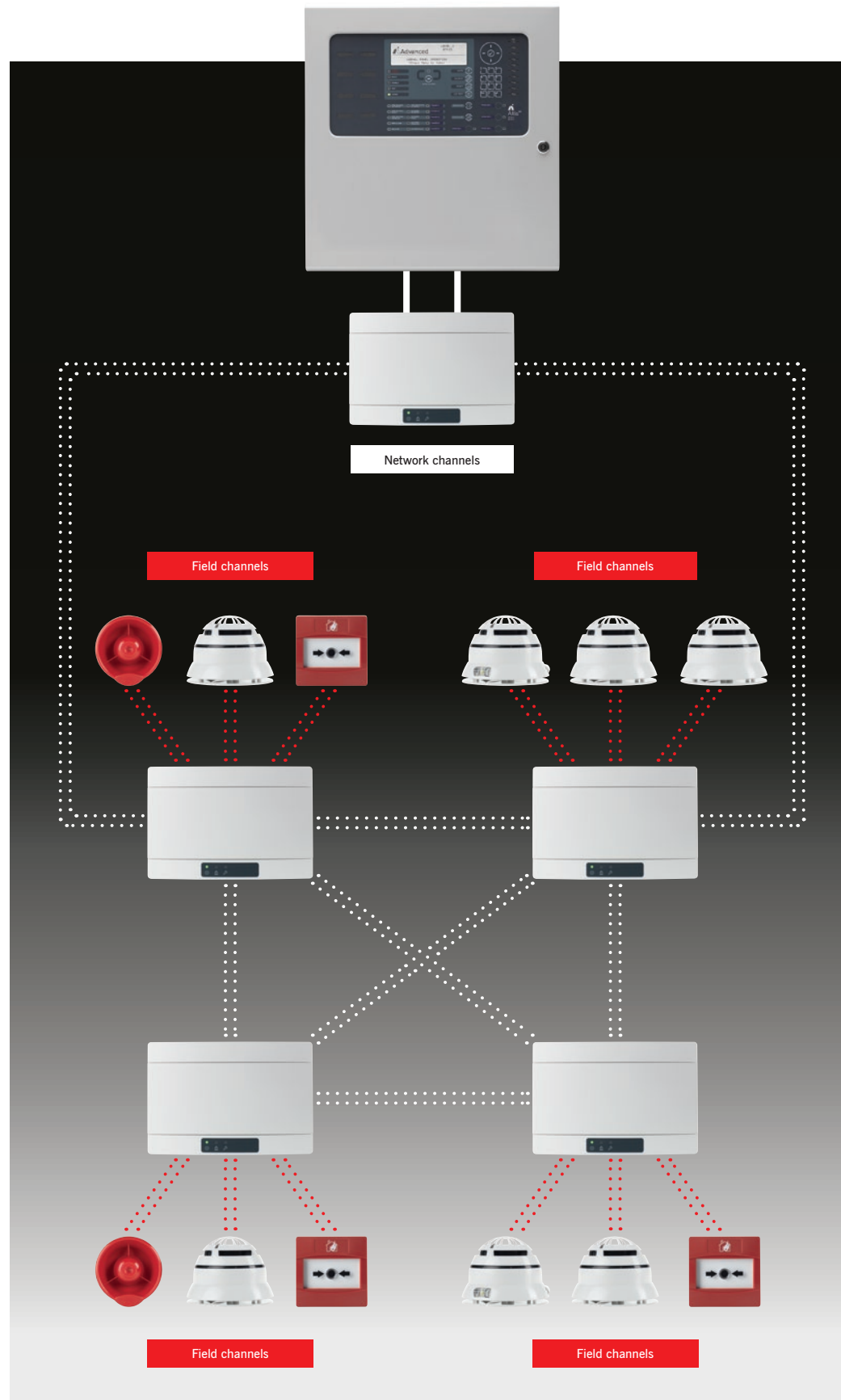
The key advantages of wireless fire systems

The Axis EN Wireless technology is extremely easy to install and represents a cost-effective solution compared to traditional cabled systems.

The Axis EN wireless devices eliminate the need for complex cable networks and all of the problems they can bring, allowing the installation to be completed in a very short time period – a few days and not weeks or months as for wired solutions. This limits the time and direct contact required on site, minimising the disturbance for tenants and disruption to site.

The system survey defines exactly what wireless infrastructure is required, so equipment costs are guaranteed and fixed. The devices can be pre-programmed quickly and easily off site contributing to increase the speed of installation and reducing the people required to install. Project costs are optimised and deadlines almost guaranteed.

Wireless fire systems require robust EN54-25 approved wireless infrastructure and fully EN54 approved sensing, control and alarm products. The Axis EN wireless product line, fully certified to the relevant EN54 standards, offers the highest performing range of fire sensing and notification technology available.



Key features

- 60 communications channels (infrastructure and field devices)
- Scalable architecture, easy to expand from a single loop to multiple systems on the same site
- Up to 6 translators per loop
- Up to 128 devices per wireless translator
- Up to 240 devices per hybrid loop
- Mesh expander technology with up to 15 expanders per translator
- Up to 32 devices per expander
- 8 expansion hops delivering a range of over 8km from translator to final device
- Dual channel redundancy
- 10-year battery life on inputs. 5-year battery life on outputs (including weekly test)
- Fully synchronised outputs with rapid reaction time
- Superior energy management using standard CR123A lithium batteries across the range
- TauREX – new user-friendly survey, installation, commissioning and maintenance software
- Superior field device performance
- Operates on frequency range 868MHz. Check local standards for applicability.

Wireless network optimiser technology

Super-scalable, ultra-reliable wireless

Axis EN wireless leaps beyond the performance of existing wireless systems with its network optimiser communications technology.

Intelligent, robust signal processing and 66 communications channels give you maximum confidence that whatever the size of the building, or the overlap of wireless infrastructure within it, you will not suffer any channel collision.

The 66 communications channels are effectively divided by infrastructure and field channels so you can easily expand the

system architecture from a single loop to multiple systems on the same site without any mutual influence.

As well as efficiently dividing channels, our network optimiser technology also checks and confirms that all data is sent and received as expected, ensuring absolute confidence in safety signalling.

This means that our Axis EN wireless fire systems can go further and use a wider range of devices than other wireless systems, and no site is too large or too challenging.

Responsiveness

Axis EN wireless delivers fast-response with all output devices harmonised at the same time for clear sound and concurrent activation of interface modules. This means that when you really need to notify or evacuate, Axis EN wireless will always perform.

It also means that resets, delays and false alarm management hush buttons will work quickly and easily.

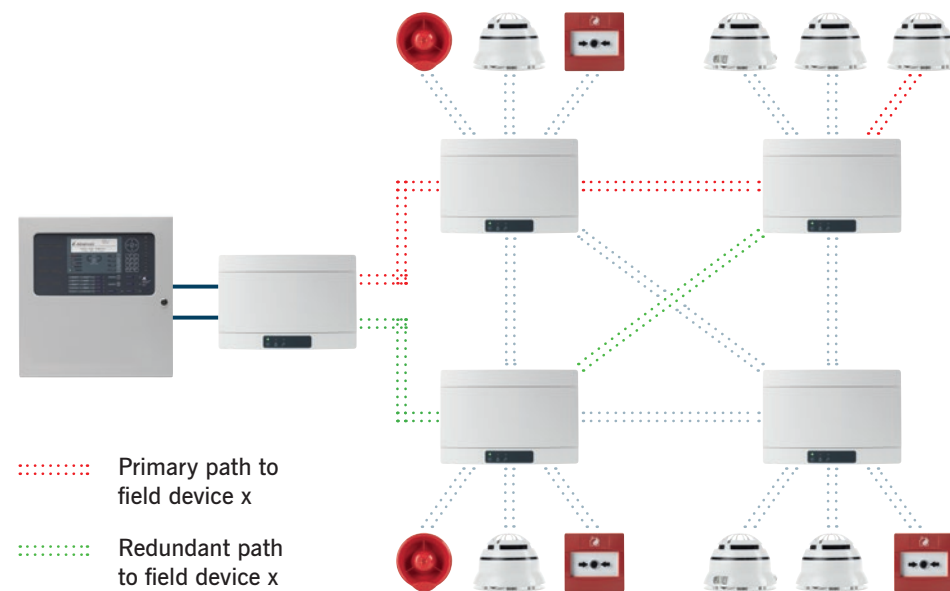


Mesh expander technology

Our mesh expander technology delivers unprecedented system reliability and performance.

If any expander in the chain fails, the transmission path finds an alternative route, ensuring communication continuity, creating an ultra-resilient wireless infrastructure.

Every Axis EN wireless translator supports up to 15 network expander modules, and the best possible redundant communication paths are identified and tested from the beginning, during system commissioning. This provides the most reliable and robust communication pathway possible, making Axis EN wireless an ultra-resilient wireless infrastructure.



Dual-channel redundant technology

Our dual-channel redundant technology, applied to every Axis EN wireless device, translator and expander, ensures superior system reliability. If one channel is blocked, the other automatically takes over so that every message is correctly delivered when and where required.

Our wireless translators and expanders are all backup powered, further enforcing our system's reliability.

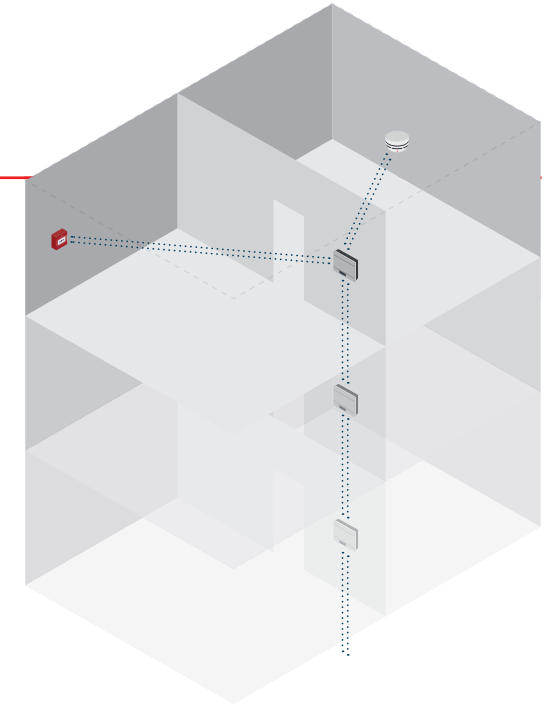


Infrastructure range

Translators and expanders have been optimised to deliver the perfect balance of range and confidence.

The point-to-point transmission range is over 1km in open air and our antenna technology is tuned for performance across frequencies and environments.

Each translator supports up to 15 expanders. And when combined with up to 8 expansion hops, an Axis EN wireless system can cover over 8km. Whereas other systems rely on a huge amount of infrastructure and power to maintain range and safety, Axis EN wireless uses less equipment and fewer batteries.



Optimised power management

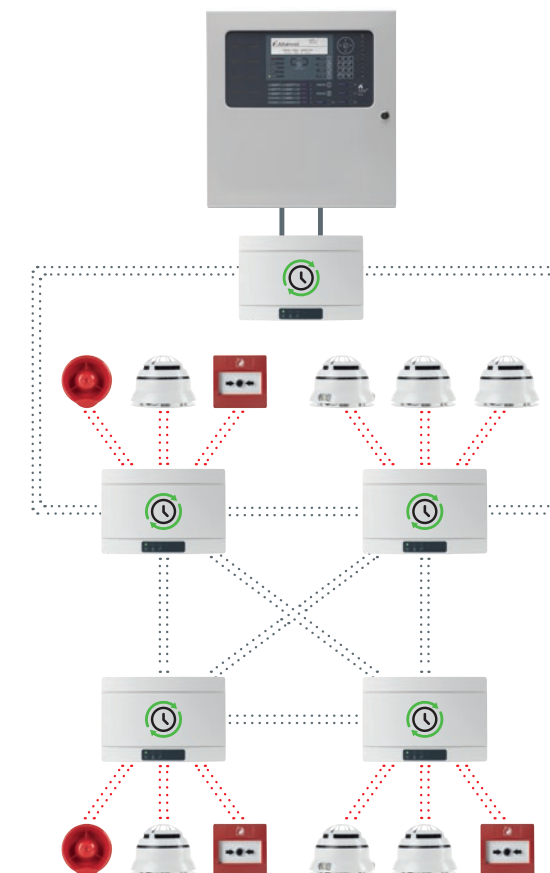
Axis EN wireless achieves maximum signal reliability with minimum power consumption.

Our communications technology ensures all devices communicate every second, and we don't waste power listening or transmitting unnecessarily.

This, alongside the robust electrical design, means our battery management is among the best available, with 10-year battery life for sensors, call points and inputs and up to 5 years for outputs, sounders and VADs (including weekly tests).

We use standard CR123A lithium batteries, available off the shelf worldwide and with ever-improving technology, and of course the best battery life means less batteries.

A 5-year warranty and proven reliability that last years, means that you're unlikely to need to change the devices. With wireless, you can also easily configure your system as your building or performance requirements change.



Axis EN wireless uses a synchronous communication protocol:

- Synchronised clock among the field and infrastructure devices
- Unique communication slot for each device to transmit and receive messages without conflicts with other equipment
- Flexible data exchange rate between infrastructure and field devices according to device status (normal/alarm/fault)
- Longer battery life

TauREX software



The easiest way to install, commission and maintain your Axis EN wireless fire system

Axis EN wireless expanders use our mesh expander technology to deliver unprecedented system reliability and performance.

If any expander in the chain fails, the transmission path finds an alternate route, ensuring communication continuity.

Every Axis EN translator supports up to 15 network expanders and the best possible redundant communication paths are identified and tested from the beginning, during system commissioning. This provides the most reliable and robust communication pathway possible, making Axis EN an ultra-resilient wireless infrastructure.

EasyScan

All Axis EN wireless products are scanned (via a QR code on the box or product) into the configuration tool's Virtual Warehouse, allowing super quick and accurate setup with no manual entry and massive time savings.



ConfigWizard

Once you've finished your design, use the Axis EN wireless configuration tool's wizard button to autolearn all your devices onto the system. The simplest and easiest large-scale wireless system programming available.

Drag&Drop

Use real system drawings in our programming tool and drop devices from the Virtual Warehouse straight onto floorplans. Easy setup and linkage of the devices together with associated signal quality display ensure your designs are accurate and your system fully functional in real time.

LiveDisplay

It provides access to a visual display of the system status, for easy control of all system devices in real time.

One Point Programming

With Axis EN wireless, everything is done by connecting wirelessly to a translator. No matter how many devices or how large your site, there's no need for cables, ladders or walking across the site. Simply install the devices in discovery mode and you can confidently leave them until the next test.

Easy fault finding

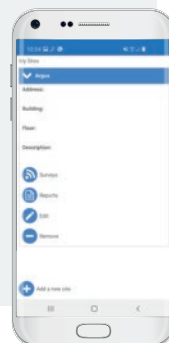
Axis EN wireless devices transmit a vast amount of data to the translator. When accessed live or via the logs, this gives rich diagnostic data for quick, simple resolution of any issues.

TauREX Report

Effective reporting provides complete information about system status post commissioning, and compliance.

Survey Tool

The new Axis EN wireless survey tool is driven by a free app that works on your android device, downloadable from the Google Play Store. It makes surveys simple and accurate and automatically delivers and saves detailed reports to help with compliance and design. The new app allows you to manage your whole portfolio of sites and surveys.



Axis^{EN}

Fire panels

Axis EN: 1 Loop



- Single loop
- Small enclosure
- Maximum 7Ah internal batteries
- 20 programmable LEDs
- Optional programmable key switch
- Up to 8 programmable key switches or 4 plus printer
- Medium, large and deep enclosure options
- Product code: Axis-5101*

Axis EN: 1-4 Loop



- One to four loops
- Large enclosure
- Standard enclosure supports max 17Ah internal batteries. Deep enclosure option supports max 45Ah
- Up to 200 additional programmable LEDs
- Up to 8 programmable key switches or 4 plus printer
- Plexi-glass door option
- Deep and extended enclosure options
- Product code: Axis-5401*

Axis EN: Integrated Peripheral Bus

- Integrated P-Bus as standard
- Up to 32 expansion cards can be added to an Axis EN panel
- Peripheral expansion option cards include
 - 4-way relay card
 - 4-way sounder card
 - 10-way monitored input card
 - 8-way relay card
 - ESPA card
 - Conventional zone card (8 class B or 4 class A zones + 3 programmable relays)
 - 16-way push button / 48 LED card
 - 16-way input / 48 output (direct drive LED outputs)
 - Fire and fault routing / protection card
 - Redundant controller
 - Smoke control interface

Axis EN: Rack Mount

- Rack-mountable control panels
- Additional 16U and 20U high IP55 enclosures
- Rack-mount peripheral chassis plate, LED and switch card module options
- Dedicated mimic door option
- Product code: add suffix 'R' to panel part code(s) eg Axis-5101R

Axis EN: 1-2 Loop



- One or two loops
- Medium enclosure
- Maximum 12Ah internal batteries
- Up to 50 additional programmable LEDs
- Up to 8 programmable key switches or 4 plus printer
- Plexi-glass door option
- Large and deep enclosure options
- Product code: Axis-5201*

Axis EN: 2-8 Loop



- Two to eight loops
- Extended enclosure
- Maximum 45Ah internal batteries
- Up to 200 additional programmable LEDs, 2 x switch cards or mimic
- Up to 8 programmable key switches or 4 plus printer
- Plexi-glass door and external battery box option
- Product code: Axis-5802*

* part code denotes loop quantity

Axis EN: Remote Terminals

- Four types available including;
 - TouchControl touchscreen with active maps
 - Remote display terminal
 - Remote control terminal with additional mute, silence, reset and resound keys
 - Remote control terminal with additional LED status indication, four programmable push buttons, mute, silence, reset, resound, lamp test and evacuate keys
- Optional level 2 access-enable key switch. (Not TouchControl)
- Integrated standard or fault-tolerant network interface with screen termination point
- Programmable display for up to 2,000 zones along with sector-based controls
- Product codes: MX-5010, MX-5020, MX-5030, MX-5010/FT, MX-5020/FT, MX-5030/FT TOUCH-10, TOUCH-10/FT



L to R = MX-5030, MX-5020, TOUCH-10

Axis^{EN} Wireless devices

Industry-Leading Wireless Detection

Advanced's EN54-approved wireless range is easy to install and provides a reliable wireless fire protection solution.

- Operates on 868-870 MHz frequency range
- Fully monitored for faults and system failures
- Internal antenna design protects from environmental conditions, vandalism, accidental damage or misuse
- Intelligent signal processing across 60 communication channels
- Mesh expander technology programmable for redundant path to the translator
- Signal strength increases automatically if there is any interference
- Full analogue data availability, e.g. detector values, wireless link quality, battery level, chamber drift compensation status
- Coverage extends up to 150 metres from translator to detector and 250 metres from translator to expander
- Survey required to establish signal strength
- Dual batteries ensure continued operation should a single battery cell fail
- Can be combined as a hybrid system with wired devices and works with the wired AlarmCalm button

Detectors

- All Axis EN wireless devices are fully intelligent and compatible with all Axis wireless translator and expander modules
- Unique dual-angle optical chamber design
- Internal algorithm processing optimises performance
- Provides enhanced rejection of alarms from steam, aerosols and dust
- Bi-directional communication protocol between all wireless devices
- Unique inverted cone chamber minimises any dust settlement
- Hexagonal honeycomb mesh design reduces insect ingress and maintains optimum sensitivity to real fires
- Device identification tab
- Dual-angle scattering analysis
- Fast test feature for engineer testing



Optical Detector

- Dual photo receivers discriminate between real and unwanted alarms
- Approved to EN54-7 and EN54-25
- Product code: Axis-TOP



Heat Detector

- Twin alarm LEDs for 360° visibility
- Multiple sensitivity settings
- Approved to EN54-5 and EN54-25
- Product code: Axis-THT



Multicriteria Detector

- Twin alarm LEDs for 360° visibility
- Multiple smoke and heat sensitivity settings
- Approved to EN54-7, EN54-5 and EN54-25
- Product code: Axis-TOH

Sounders and Sounder Beacons



Sounder Base

- Wireless communication between the control panel and the sounder base via the wire to wireless translator interface module using Axis EN protocol
- Communication meets EN 54-25
- Communication range up to 200m in open space
- Bi-colour LED provides visual indication for device status
- 32 selectable tones
- 3 volume levels
- Product code: Axis-TSMB



Sounder Beacon Base

- Wireless communication between the control panel and the sounder base via the wire to wireless translator interface module using Axis EN protocol
- The sounder has a supplementary visual indicator that reinforces the audible warning
- Communication meets EN 54-25
- Communication range up to 200m in open space
- Bi-colour LED provides visual indication for device status
- 32 selectable tones
- 3 volume levels
- Product codes: Axis-TSVMB (white flash) Axis-TSVMBRF (red flash)

Call Points



Manual Call Point

- Bi-directional communication protocol between all wireless devices
- Glass appearance maintains operator deterrence
- Visible warning flag confirms activation
- Simple key to reset operating element - no broken glass
- Complete functional test with every activation
- Product code: Axis-TCP

Modules



Wireless Output Module

- Bi-directional wireless comms
- Fully supervised for fault conditions (with EOL resistors)
- Changeover relay and 12/24V output
- On site programmable
- 22 pairs of field channels
- Uses dual low-cost lithium battery
- Easy scan and link programming option
- Product code: Axis-TMO (battery powered)



Wireless Wall Sounder Module

- Flexible modular design
- Bi-directional wireless communication
- Fits Axis conventional wall sounders and sounder beacons
- Self-optimising wireless communication
- Product code: Axis-TWSM



Wireless Input Module

- Bi-directional wireless comms
- Fully supervised for alarm and fault conditions (with EOL resistors)
- 22 pairs of field channels
- Uses dual low-cost lithium battery
- Easy scan and link programming option
- Product code: Axis-TMI

Translators and Expanders



Wireless Translator

- Bi-directional wireless comms
- Long communication range (~1km in open air)
- Compatible with up to 15 expanders
- Loop-powered or external power supply
- Low current consumption
- On-site programming via internal keypad, or wireless/wired PC connection
- Easy scan and link programming option
- Product code: Axis-TMT



Wireless Expander

- Bi-directional wireless comms
- Long communication range (up to 1km in open air)
- Connects up to 32 wireless devices per expander
- Compatible with all intelligent and conventional translators
- Requires external power supply
- Low current consumption
- External PSU status supervision
- Easy scan and link programming option
- Product code: Axis-TME

Accessories



Sounder Base Covers

- Product codes: Axis-LID200/R (red) Axis-LID200/W (white)

Survey Kit



Wireless Survey Kit

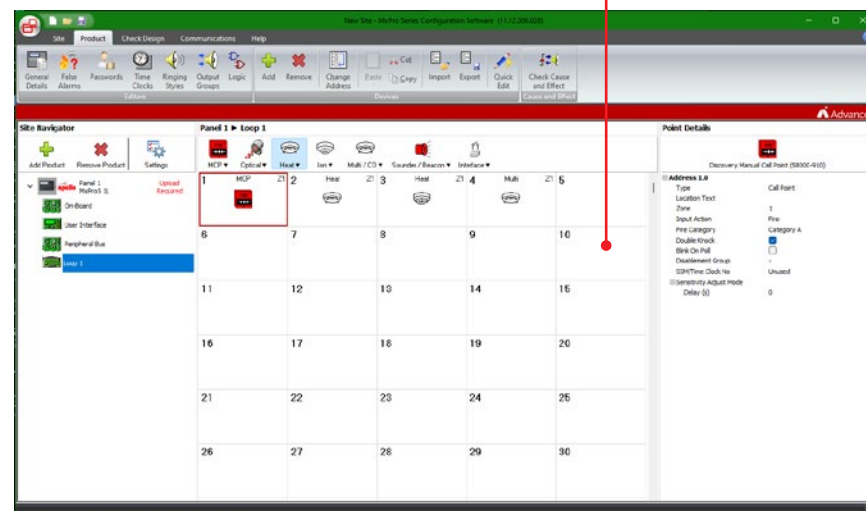
- Used to test the reliability of the wireless channels or frequency bands used by Axis EN
- Selects those that are less congested for building up the Axis EN wireless system
- Product code: AXIS-TSK

Our most intuitive configuration software yet

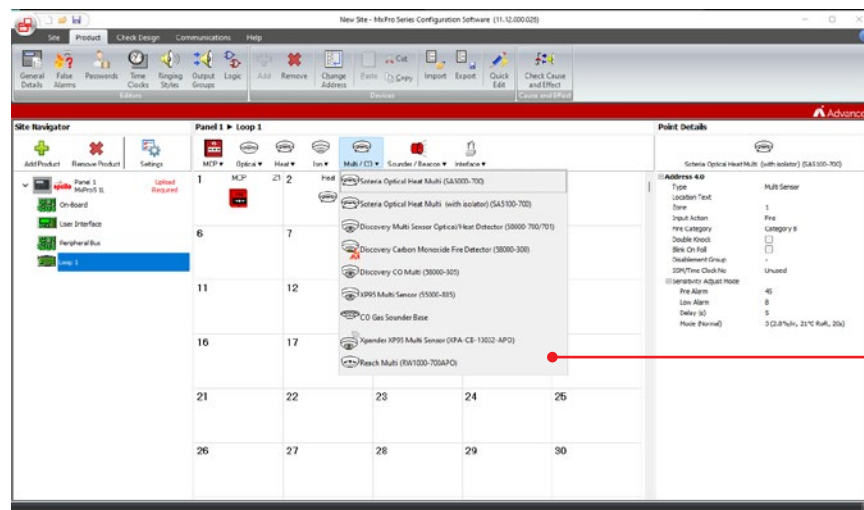
The next-generation Axis EN uses our latest ConfigTool, (PC-Net-022) – for faster, more flexible, fuss-free setup.

Improved user interface

- We've updated the user interface with speed and efficiency in mind. You can access most operations from the program menu, aided by a toolbar with descriptions of each function and easy-to-follow icons.
- We've also optimised the use of the available screen space to ensure more information is visible. You can see all the devices fitted by address in a grid layout. Simply by selecting an address, you can configure all device inputs and outputs from the same screen.
- Plus, it's so much faster, with no delays even when setting up the largest of site designs.



1 Loop grid with right-hand panel for settings/selections by device



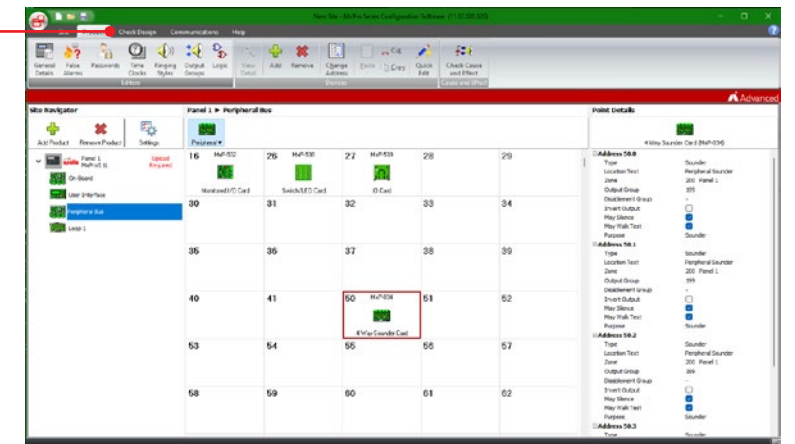
2 Drop-down menu lists make device selection easy



Design checker

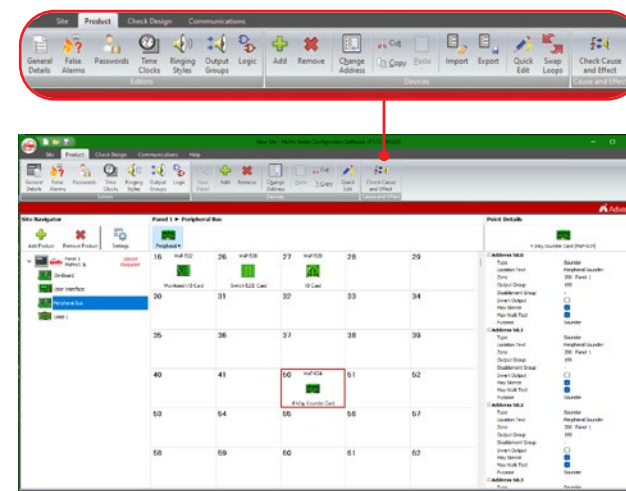
3 Enhanced menu navigation

- You can run an in-depth analysis of over 80 checks to safeguard against common site design issues. By flagging potential problems early, you can avoid uploading flawed designs, and save fault-finding time.



Cause and effect checking

- A sophisticated cause and effect design checker has been incorporated to allow a site design to be verified as it is constructed. It's possible to prove a design and correct any mistakes without actually having to go to site.



Fast communication

- Communication speed is greatly improved. Transfer of the configuration settings to/from the panel is more than 10 times faster than previously – typically taking just 30 seconds instead of 6 to 8 minutes.
- Super-fast file loading and saving saves you time and money, even when working with large, complex site designs.
- You can now import from another design and choose from more settings than ever before. Plus, to ensure seamless working between existing and new Axis EN installations, you can import files from PC-Net-003.

The single-loop fire panel

AxisGo

- is the new-generation, single-loop fire panel from Advanced.
- brings you easy, cost-effective access to popular premium features from our Axis EN range in a simpler, non-networkable format.
- is the ideal solution for all your small to medium-sized sites where networking's not needed, but quality, performance and ease of use are.



Standalone fire protection for complete peace of mind

Please note: AxisGo is currently available in a selection of countries where EN54 Standards apply. For full details, please speak to your sales representative.



Easy to install and use

Time is money, so we've built in a host of features that make AxisGo a breeze to install, configure and use.

- An easy-fit chassis and unique door design ensure installation is fast and fuss free
- Familiar controls and menus mean there's no lengthy learning curve
- A new, intuitive ConfigTool makes setup quicker and easier than ever
- A powerful design checker allows you to prove your system will work without visiting site
- If you do need support, our highly rated technical services team's got your back with advice, tips and training.



Fast and efficient

AxisGo is designed with speed and efficiency in mind.

- Built-in peripherals including USB and ethernet ports
- Latest microcontroller technology ensures high-speed operation.



Feature-rich and flexible

We understand that small sites aren't always simple, so we've packed AxisGo with flexibility to give you the best of all worlds.

- A wide range of cause-and-effect programming to suit your site
- Comprehensive false alarm management and reduction options to minimise unwanted alarms
- Enhanced diagnostics for fewer faults, faster fixes and better performance
- Optional expansion module for fire and fault routing equipment
- 15 zonal LEDs as standard without the need to buy a separate LED zone card
- Our range of versatile Axis EN devices gives you complete freedom to quickly and easily design the perfect wired and wireless solutions for your site
- A choice of two panel address sizes so you only buy the capacity you need.



Ready for you now... and for the future

We understand that fire protection solutions need longevity.

- AxisGo's state-of-the-art technology ensures high performance today – and for years to come.

AxisGo parts list and order codes

AxisGo		
AxisGo1	AxisGo1 - 1-Loop Fire Alarm Panel – Grey	50 addresses
AxisGo+		
AxisGo1+	AxisGo1+ - 1-Loop Fire Alarm Panel – Grey	240 addresses
Options		
GOP-001	AxisGo PBUS Adaptor Card	
GOP-002	AxisGo Access Enable Key-Switch	
MXP-532	AxisGo Routing/Protection Interface	
MXP-506	AxisGo Routing Termination Card	

Axis^{EN} Parts list

Product Code	Description
Fire Panels	
AXIS-5101	1-Loop Fire Panel – small encl.
AXIS-5101M	1-Loop Fire Panel – medium encl.
AXIS-5101L	1-Loop Fire Panel – large encl.
AXIS-5101D	1-Loop Fire Panel – deep encl.
AXIS-5201	1-2 Loop Fire Panel c/w 1 Loop Card – medium encl.
AXIS-5201L	1-2 Loop Fire Panel c/w 1 Loop Card – large encl.
AXIS-5201D	1-2 Loop Fire Panel c/w 1 Loop Card – deep encl.
AXIS-5401	1-4 Loop Fire Panel c/w 1 Loop Card – large encl.
AXIS-5401D	1-4 Loop Fire Panel c/w 1 Loop Card – deep encl.
AXIS-5401E	1-4 Loop Fire Panel c/w 1 Loop Card – extended encl.
AXIS-5802	2-8 Loop Fire Panel c/w 2 Loop Cards – extended (standard network)
AXIS-5802/FT	2-8 Loop Fire Panel c/w 2 Loop Cards – extended (fault-tolerant network)
<i>All 2-, 4- and 8-Loop panels are available with up to 2, 4 & 8 Loop cards fitted</i>	
Loop Driver Cards	
MXP-568	Loop Driver Card
Remote Terminals	
MX-5010	Remote Display Terminal (RDT)
MX-5020	Remote Control Terminal (RCT) – small
MX-5030	Remote Control Terminal (RCT) – large
MX-5010/FT	Remote Display Terminal (RDT) – fault tolerant
MX-5020/FT	Remote Control Terminal (RCT) – small (fault tolerant)
MX-5030/FT	Remote Control Terminal (RCT) – large (fault tolerant)
TouchControl	
TOUCH-10	Touch-Screen Terminal – standard network
TOUCH-10/FT	Touch-Screen Terminal – fault-tolerant network
TOUCH-10-SBB	Touch-Screen Terminal Surface Back Box
Network Cards	
MXP-503*	Network Card – standard network
MXP-509*	Network Card – fault-tolerant network
MXS-028	Spare Fault-tolerant Network Interface
MXP-030	Standard Network Booster/Isolator – DIN-rail module
MXP-542	24VDC – 24VDC Converter/Isolator
MXP-635-A	Fibre Optic Converter – active
MXP-635-P	Fibre Optic Converter – passive
MXP-635-MM	Fibre Optic Converter Multi-Mode
MXP-635-SM	Fibre Optic Converter Single-Mode
MXP-635-BD/AB	Fibre Optic SFP Module – bi-directional (up)
MXP-635-BD/BA	Fibre Optic SFP Module – bi-directional (down)
MXP-635/IVIEW	Fibre Optic iView Commissioning Tool (limited)
MXP-635/COMM	Fibre Optic iView Commissioning Tool (interactive)
<i>* Add F for fitted</i>	

Product Code	Description
Peripherals & P-Bus Expansion Cards	
MXP-034*	4-Way Sounder Card
MXP-035*	4-Way Relay Card
MXP-035-BXP	4-Way Relay Card with 1.5A PSU – boxed
MXP-506	Routing Termination Card
MXP-532*	Routing/Protection Interface
MXP-536*	8-Way Conventional Zone Monitor Card
MXP-537*	10-Way Monitored Input Card
MXP-538	Switch/LED Module – 16 switches, 3 programmable LEDs/switches (red, yellow, green)
MXP-539	Multi-Way I/O Mimic Driver Card – 16 switch inputs and 48 LED outputs
MXP-544*	8-Way Relay Card
<i>* Add F for fitted</i>	
Other Peripherals	
MXP-501	Remote Battery Temperature Sensor
MXP-505	Sounder (Pt13) Active EOL
MXP-507*	2-Way Relay Card
MXP-512*	Printer Assembly
MXS-509	Spare Paper Roll for MXP-512 Printer
MXP-053	2-Way Stretch/Latch Input Module
<i>* Add F for fitted</i>	
AlarmCalm	
MXP-541V-002	AlarmCalm Button with Buzzer
Key Switches	
MXP-511*	Access Enable Key Switch for 5000
MXP-518-001*	Access Enable Key Switch for 5010/5020
MXP-518-002*	Access Enable Key Switch for 5030
MXP-516*	2-Pos Key Switch – trapped
MXP-517*	2-Pos Key Switch – untrapped
MXP-519*	2-Pos Key Switch – momentary (trapped)
MXP-515*	3-Pos Key Switch – untrapped all positions
MXP-515T*	3-Pos Key Switch – key-free in centre position only
MXS-511-KEY	Spare MXP-511 Access Enable Key
<i>* Add F for fitted</i>	
Network Peripherals	
MXP-545	PENN – standard network
MXP-545/FT	PENN – fault-tolerant network
MXP-543	Damper Interface Module (Apollo protocol)
MXP-046-BX1	Damper Interface Module – boxed (Apollo protocol)
MXP-547*	ESPA Pager Interface
MXP-547-BX	ESPA Pager Interface – boxed
<i>* Add F for fitted</i>	

Product Code	Description
LED Indication	
MXP-513M-050RD*	50 Zone Fire (red)
MXP-513M-050RY*	50 Zone Fire (red) + Fault (yellow)
MXP-513M-050YL*	50 Zone Fault (yellow)
MXP-513L-050RD*	50 Zone Fire (red)
MXP-513L-050RY*	25 Zone Fire (red) + Fault (yellow)
MXP-513L-050YL*	50 Zone Fault (yellow)
MXP-513L-100RD*	100 Zone Fire (red)
MXP-513L-100RY*	50 Zone Fire (red) + Fault (yellow)
MXP-513L-100YL*	100 Zone Fault (yellow)
MXP-513L-200RY*	200 Zone Fire (100 x red) + Fault (100 x yellow)
MXP-513L-050CRY*	50 Zone Column Format – Fire (red) + Fault (yellow)
MXP-513L-050CRYG*	50 Zone Column Format (30 x red/yellow and 20 x green/yellow)
MXP-513-050RD*	50 Zone Fire (red)
MXP-513-050RY*	25 Zone Fire (red) + Fault (yellow)
MXP-513-050YL*	50 Zone Fault (yellow)
MXP-513-100RD*	100 Zone Fire (red)
MXP-513-100RY*	50 Zone Fire (red) + Fault (yellow)
MXP-513-100YL*	100 Zone Fault (yellow)
MXP-513-200RY*	200 Zone Fire (100 x red) + Fault (100 x yellow)
MXP-513-050CRY*	50 Zone Column Format – Fire (red) + Fault (yellow)
MXP-513-050CRYG*	50 Zone Column Format (30 x red/yellow and 20 x green/yellow)
<i>* Add F for fitted</i>	
BMS Interface	
MXP-510-BX	BMS/Graphics Interface – boxed
MXP-510-BX/FT	BMS/Graphics Interface – boxed (fault tolerant)
MXP-510	BMS/Graphics Interface – card only
MXP-510/FT	BMS/Graphics Interface – card only (fault tolerant)
MXP-642	Commander-BACnet/Modbus (IP) Interface (Standard/Basic) – requires BMS-510
MXP-642C	Commander-BACnet/Modbus (IP) Interface (Configured) – requires BMS-510
23-PSU/250	Commander Power Supply – 12VDC 2.5A
Graphics Software	
PC-NET-005-L1	Graphical Control Software – standard (up to 3 panels)
PC-NET-005-L2	Graphical Control Software – standard (up to 15 panels)
PC-NET-005-L2P	Graphical Control Software – premium (up to 15 panels)
PC-NET-005-L3	Graphical Control Software – standard (up to 200 panels)
PC-NET-005-L3P	Graphical Control Software – premium (up to 200 panels)
PC-NET-005-SWM	Smart Watch Module
PC-NET-005-SWM4R	Smart Watch Module (4 inputs)
PC-NET-005-SWM6	Smart Watch Module (4-6 panels)
PC-NET-005-SWM15	Smart Watch Module (7-15 panels)
PC-NET-005-SCU	Smart Cube Unit
PC-NET-005-L1R-L2R	Dongle Upgrade L1R to L2R
PC-NET-005-L2R-L3R	Dongle Upgrade L2R to L3R
PC-NET-005-L2R-L2P	Dongle Upgrade L2R to L2P
PC-NET-005-L2P-L3P	Dongle Upgrade L2P to L3P
PC-NET-005-L3R-L3P	Dongle Upgrade L3R to L3P

Product Code	Description
Cables	
UP-001	FS232 9-Way to 3-Way Plug-In Connector – upload/download lead
UP-006	USB Upload/Download Lead for Config Software
UP-015	USB Lead (2M A-B Type)
UP-017	Serial to Ethernet Interface (Moxa)
Power Supplies	
MXP-549	1.5A 24V EN54-4 PSE & Charger – boxed (7Ah battery)
MXP-549-12V	1.5A 12V EN54-4 PSE & Charger – boxed (7Ah battery)
MXP-650	3A 24V EN54-4 PSE & Charger – boxed (17Ah battery)
MXP-650/D	3A 24V EN54-4 PSE & Charger – boxed (38Ah battery)
MXP-651	5A 24V EN54-4 PSE & Charger – boxed (17Ah battery)
MXP-651/D	5A 24V EN54-4 PSE & Charger – boxed (38Ah battery)
Spare (Caged) PSUs	
MXS-049	Spare 1.5A EN54-4 PSU & Battery Charger
MXS-650	Spare 2.5A EN54-4 PSU & Battery Charger
MXS-651	Spare 5.0A EN54-4 PSU & Battery Charger
Panel Kits and Spares	
MXS-011	Spare Panel Door Key
MXS-013	Spare Panel Lock and Key
MXS-505	Spare Glazed Door key
MXS-518	MX-5000 Control Panels Spares Kit
MXS-520	MX-5000 Remote Terminals Spares Kit
MXS-521	MX-5000 Battery Leads
MXS-519	MX-5000R Rack Mount Spares Kit
MXS-522	MX-5000R Battery Leads
MXS-5-FP-S	Spare Fascia Plate and Membrane
MXS-5-FP-ML	Spare Fascia Plate and Membrane
Spare Base Cards	
MXS-501-CP-S	Spare 5100 Basecard w Small Chassis
MXS-501-CP-M	Spare 5100 Basecard w Med Chassis
MXS-501-PCB	Spare 5100 1 Loop Basecard PCB – no loop cards (programmed)
MXS-501-PSU	Spare 5100 1 Loop Basecard – PSU only
MXS-502-CP	Spare 5200 Basecard w Med Chassis
MXS-502-PCB	Spare 5200 1 Loop Basecard PCB – no loop cards (programmed)
MXS-502-PSU	Spare 5200 1 Loop Basecard – PSU only
MXS-503-CP	Spare 5400 Basecard w Lrg Chassis
MXS-503-CP-E	Spare 5400 Basecard w Ext Chassis
MXS-503-PCB	Spare 5400 1 Loop Basecard PCB – no loop cards (programmed)
MXS-503-PSU	Spare 5400 1 Loop Basecard – PSU only
MXS-504	Spare Display card
MXS-506	Spare MX-5010 Card only
MXS-506/FT	Spare MX-5010 Card only – fault-tolerant network
MXS-507	Spare MX-5020 Card Only
MXS-507/FT	Spare MX-5020 Card Only – fault-tolerant network
MXS-508	Spare MX-5030 Card Only
MXS-508/FT	Spare MX-5030 Card Only – fault-tolerant network
Small Enclosure Spares	
MXM-501	Semi-Flushing Bezel
MXM-522-BB	Spare Back Box
MXM-522-D1	Spare Door
MXM-522-CP	Spare Chassis Mtg Plate

Axis^{EN} Parts list

Product Code	Description
Medium Enclosure Spares	
MXM-502	Semi-Flushing Bezel – MX-5000
MXM-508	Glazed Door Kit – medium
MXM-508Z	Glazed Door Kit – medium (double aperture)
MXM-523-BB	Spare Back Box
MXM-523-D1	Spare Door
MXM-523-D2	Spare Door (c/w zone aperture)
MXM-523-CP	Spare Chassis Mounting Plate

Large/Deep Enclosure Spares	
MXM-503	Semi-Flushing Bezel – MX-5000
MXM-507	Glazed Door Kit – large/deep
MXM-507Z	Glazed Door Kit – large/deep (double aperture)
MXM-524-BB	Spare Back Box
MXM-525-BB	Spare Back Box – deep enclosure
MXM-524-D1	Spare Door
MXM-524-D2	Spare Door – c/w zone aperture
MXM-524-D3	Spare Door – c/w 2 x switch apertures
MXM-524-D4	Mimic Door with Single Aperture
MXM-524-D5	Blank Door
MXM-524-CP	Spare Chassis Mounting Plate

Extended Enclosure Spares	
MXM-536	Semi-Flushing Bezel
MXM-538-D1	Glazed Door Kit – extended (zone aperture)
MXM-538-D2	Glazed Door Kit – extended (2 x glazed apertures)
MXM-538-D3	Glazed Door Kit – extended (mimic aperture)
MXM-537-BB	Spare Back Box
MXM-537-D1	Spare Door
MXM-537-D2	Spare Panel Door with Mimic Aperture
MXM-537-BP	Blank Plate for Zone LED Aperture

Repeater Enclosure Spares	
MXM-521	Semi-Flushing Bezel – MX-5010 / 5020
MXM-509	Semi-Flushing Bezel – MX-5030 RCT – large
MXM-543-BB	Spare back-box – MX-5010 / 5020
MXM-544-BB	Spare back-box – MX-5030 RCT – large
MXM-543-D1	Spare panel cover – MX-5010 / 5020
MXM-543-D2	Spare panel cover + K/S app – MX-5010 / 5020
MXM-544-D1	Spare panel cover – MX-5030 RCT – large
MXM-544-D2	Spare panel cover + K/S app – MX-5030 RCT – large

Other Enclosure Spares	
MXM-516	Battery (18Ah) / Utility Enclosure – medium
MXM-517	Battery (18Ah) / Utility Enclosure – large
MXM-546	Battery (45Ah) Enclosure – deep
MXM-518	Utility Enclosure – deep
MXM-519	Chassis mounting plate for Utility Enclosure (3 cards)
MXM-531	Document Enclosure – medium
MXM-532	Document Enclosure – large
MXM-533	Modem/ESPA/BMS Interface Enclosure
MXM-504	Termination Enclosure – medium
MXM-505	Termination Enclosure – large
MXM-506	Termination Enclosure – deep
MXM-530	Cable Clamp

Product Code	Description
Small Enclosure Special Finishes	
MXM-501-SSB	Semi-Flushing Bezel – stainless steel brushed
MXM-522-D1-SSB*	Spare Door – stainless steel brushed
MXM-522-BB-SSB	Spare Back Box – for use with stainless steel door (MW334E)
* Add F for fitted	

Medium Enclosure Special Finishes	
MXM-502-SSB	Semi-Flushing Bezel – stainless steel brushed
MXM-523-D1-SSB*	Spare Door. Stainless steel brushed
MXM-523-D2-SSB*	Spare Door (c/w zone aperture) – stainless steel brushed
MXM-523-BB-SSB	Spare Back box for use w stainless steel door (MW334E)
* Add F for fitted	

Large/Deep Enclosure Special Finishes	
MXM-503-SSB	Semi-Flushing Bezel – stainless steel brushed
MXM-524-D1-SSB*	Spare Door – stainless steel brushed
MXM-524-D2-SSB*	Spare Door (c/w zone aperture) – stainless steel brushed
MXM-524-BB-SSB	Spare Back Box – for use with stainless steel door (MW334E)
* Add F for fitted	

Repeater Enclosure Special Finishes	
MXM-521-SSB	Semi-Flushing Bezel – MX-5010/5020 (stainless steel brushed)
MXM-509-SSB	Semi-Flushing Bezel – MX-5030 Large RCT (stainless steel brushed)
MXM-543-D1-SSB	Panel Cover – MX-5010/5020 (stainless steel brushed)
MXM-543-D2-SSB	Panel Cover & Key Switch Aperture – MX-5010/5020 (stainless steel brushed)
MXM-544-D1-SSB	Panel Cover – MX-5030 Large RCT (stainless steel brushed)
MXM-544-D2-SSB	Panel Cover & Key Switch Aperture – MX-5030 large RCT (stainless steel brushed)

Rack Mount Panels	
MX-5101VR	1-Loop Fire Panel
MX-5201VR	1-2 Loop Fire Panel c/w 1 Loop Card
MX-5401VR	1-4 Loop Fire Panel c/w 1 Loop Card

Rack Mount LED Indication	
MXP-513R-050RD	4U LED Card 50 Zone Fire (red)
MXP-513R-050RY	4U LED Card 50 Zone Fire (red) + Fault (yellow)
MXP-513R-050YL	4U LED Card 50 Zone Fault (yellow)
MXP-513R-100RD	4U LED Card 100 Zone Fire (red)
MXP-513R-100RY	4U LED Card 100 Zone Fire (red) + Fault (yellow)
MXP-513R-100YL	4U LED Card 100 Zone Fault (yellow)
MXP-513R-200RY	4U LED Card 200 Zone Fire (red) + Fault (yellow)
MXP-513R-050CRY	4U LED Card 50 Zone Column Format – Fire (red) + Fault (yellow)
MXP-513R-050CRYG	4U LED Card 50 Zone Column Format (30 x red/yellow and 20 x green/yellow)

Product Code	Description
Rack Mount Spares	
MXM-510-16U	IP55 19" Rack Mount Enclosure – 16U high
MXM-510-20U	IP55 19" Rack Mount Enclosure – 20U high
MXM-510-KL	CAM Key-Lock Kit for Outer Door
MXM-510-BS	Battery Shelf
MXM-510-BS1	Battery Shelf Lower
MXM-510-CP	Chassis Plate
MXM-511-1U	Blanking Plate – 1U
MXM-511-2U	Blanking Plate – 2U
MXM-511-3U	Blanking Plate – 3U
MXM-511-4U	Blanking Plate – 4U
MXM-511-5U	Blanking Plate – 5U
MXM-511-6U	Blanking Plate – 6U
MXM-511-7U	Blanking Plate – 7U
MXM-511-8U	Blanking Plate – 8U
MXM-511-9U	Blanking Plate – 9U
MXM-511-1U-TOP	Blanking Plate – 1U-TOP
MXM-512	Blanking LED Plate – 4U
MXM-513-BB	6U Back Box
MXM-515-6U	6U Chassis Plate
MXM-513-D1	6U Door D1 Blank
MXM-513-D2	6U Door D2 LED
MXM-513-D3	6U Door D1 c/w Aperture
MXM-513-BP	6U Switch/LED Blank Plate
MXM-513-MF	6U Switch/LED Mounting Frame
MXM-513-FP	6U Fascia Plate Blank
MXM-514-BB	8U Back Box
MXM-515-8U	8U Chassis Plate
MXM-514-D1	8U Door D1 c/w Aperture
MXM-514-FP	8U Fascia Plate Blank
MXM-535-D1	13U Hinged Door – for 9 x MXP-538 or blank plates

Intelligent Detectors and Bases	
AXIS-OPX	Axis EN Optical Detector with Isolator
AXIS-OHX	Axis EN Multi-Detector with Isolator (optical/heat)
AXIS-HTX	Axis EN Heat Detector with Isolator
AXIS-OP	Axis EN Optical Detector
AXIS-OH	Axis EN Multi-Detector (optical/heat)
AXIS-HT	Axis EN Heat Detector
AXIS-MB	Axis Mounting Base

Duct Detectors	
AXIS-DDH	Duct Detector Housing with Axis Mounting Base
20-DDH-ST0.6-ADV	0.6m Sampling Tube
20-DDH-ST1.5-ADV	1.5m Sampling Tube
20-DDH-ST2.8-ADV	2.8m Sampling Tube
20-DDH-BRA-ADV	Duct Detector Bracket

Intelligent Call Points	
AXIS-CP	Axis EN Manual Call Point (red)
AXIS-CP/Y	Axis EN Manual Call Point (yellow)
AXIS-WCP	Axis EN Waterproof Manual Call Point (red)
AXIS-CPKEY	Spare Reset Key for Axis EN Call Point
AXIS-CPCI	Transparent Cover for Axis-CP (no text)
AXIS-CPFMP	Wall Flush Mount Plate with external Frame (red) for Axis-CP

Sounders	
AXIS-S2MB	Axis EN Sounder Base, Intelligent
AXIS-S2AMB	Axis EN Slave Sounder Base
AXIS-CWS	Conventional Wall Sounder (red)
AXIS-CWS/W	Conventional Wall Sounder (white)
AXIS-WSM	Intelligent Sounder Interface Module

Product Code	Description
Sounder-Beacons	
AXIS-SV2MB	Axis EN Sounder Beacon Base, Intelligent (white LED)
AXIS-SV2MBRF	Axis EN Sounder Beacon Base, Intelligent (red LED)
AXIS-SV2AMB	Axis EN Slave Sounder Beacon Base (white LED)
AXIS-CWSV	Conventional Wall Sounder Beacon (red)
AXIS-CWSV/W	Conventional Wall Sounder Beacon (white)
20-CBE1002	Conventional VAD [EN54-23] (requires base)

Single Input/Output/Relay Modules	
20-VM100-ADV	Monitored Input Module
20-VMM100-ADV	Mini Monitored Input Module
20-VMC100-ADV	Monitored Output Module
20-VMMC100-ADV	Mini Monitored Output Module
20-VMC120-ADV	Relay Output Module
20-VMMC120-ADV	Mini Relay Output Module

Multi Input/Output/Relay Modules	
20-VMIC100-ADV	Monitored Input/Output Module
20-VMMIC100-ADV	Mini Monitored Input/Output Module
20-VMIC120-ADV	Monitored Input/Relay Output Module
20-VMMIC120-ADV	Mini Monitored Input/Relay Output Module
20-VMIC404-ADV	4 Input/4 Relay Output Module
20-VMDIC404-ADV	4 Input/4 Relay Output Module DIN Rail Mount
20-VMIC602-ADV	6 Input/2 Relay Output Module
20-VMIC422-ADV	4 Input/2 Relay Output/2 Monitored Output Module
20-VMCZ100-ADV	Conventional Zone Module

Accessories	
AXIS-PU	Axis EN Device Programming Unit
AXIS-WP	Silicon Base Gasket
20-F100-ADV	Remote Indicator
20-WHCP-BBC	Weatherproof Call Point Housing with Clear Back Box
20-WHCP-BBR	Weatherproof Call Point Housing with Red Back Box
AXIS-LID200/R	Cover for Axis EN Sounder Base Red (pack of 5)
AXIS-LID200/W	Cover for Axis EN Sounder Base White (pack of 5)

Wireless Detectors	
AXIS-TOP	Axis EN Optical Detector
AXIS-THT	Axis EN Heat Detector
AXIS-TOH	Axis EN Multi-Detector (optical/heat)

Wireless Call Point	
AXIS-TCP	Axis EN Call Point (red)

Wireless Sounders & Sounder-Beacons	
AXIS-TSMB	Axis EN Base Sounder
AXIS-TSVMB	Axis EN Base Sounder VAD (white LED)
AXIS-TSVMBRF	Axis EN Base Sounder VAD (red LED)
AXIS-TWSM	Axis EN Wall Sounder Module

Wireless Modules	
AXIS-TMT	Axis EN Translator
AXIS-TME	Axis EN Expander
AXIS-TMI	Axis EN Input Module
AXIS-TMO	Axis EN Battery Output Module

Wireless Accessories	
AXIS-TSK	Axis EN Survey Kit
AXIS-LID200/R	Cover for Axis EN Sounder Base Red (pack of 5)
AXIS-LID200/W	Cover for Axis EN Sounder Base White (pack of 5)



Email: enquiries@advancedco.com
Web: www.advancedco.com



Axis EN, AxisGo and all other Advanced product brands are trademarks of Advanced Electronics Ltd. All rights reserved.



A **Halma** company