

# EvacGo

## Evacuation Alert System

Easy BS 8629 Compliance





Book your place on  
our FIA certified  
CPD A Guide to  
Meeting BS 8629



# EvacGo

## The evacuation alert system for easy BS 8629 compliance

**Building Regulations  
require evacuation  
alert system  
installation in all  
residential new  
builds over 18m.\***

EvacGo makes it easy to comply with the latest regulations. Wired, wireless and hybrid options offer flexibility, whilst delivering performance, quality and ease of use. Compatibility with leading sounder protocols gives you full design flexibility to meet the needs of your site.

This robust system combines proven power and performance with simple operation for fast, effective resident notification in fire situations – ensuring safe evacuation and complete peace of mind.

**Creating a safer future**

\*In England and Scotland.



# Contents

Foreword	4
About Advanced	5
What is BS 8629?	6
Do I need an evacuation alert system?	8
Online CPD available: A guide to meeting BS 8629	9
Why choose an evacuation alert system from Advanced?	10
Making it easy for you to follow BS 8629	11
Benefits of EvacGo	12
The tamper-proof enclosure	14
View panel status	15
Design considerations	16
The importance of evacuation alert zones	17
Siting the evacuation alert panel	18
ServiceTool	20
Every evacuation panel is hand built	21
From temporary 'simultaneous evacuation' to 'stay put' – with ease	22
Features of the Advanced evacuation alert system	23
Frequently asked questions	30
EvacGo training	32
Highly rated customer support. By telephone and online	33
Order codes and options	34



# Foreword

## The critical importance of the BS 8629 Code of Practice

The tragedy of Grenfell, and many other tall building fires, serve as stark reminders that the unthinkable can happen.



**Clear, efficient evacuation procedures form an important part of ensuring life safety, so any measures that can be put in place to support them must be wholeheartedly welcomed.**

As such, the development and publication of BS 8629 marked a critical turning point. The introduction of dedicated evacuation alert systems in residential buildings containing flats, is an important step in helping guard against future loss of life. They also give our fire and rescue service personnel a far better chance of achieving the successful outcomes they strive for.

Although the code of practice recommendations have been written with new buildings as their focus, the guidance should be taken as best practice for any tall residential building.

Since December 2022, an evacuation alert system has been required in England and Scotland for new residential buildings. We urge you to work with your local fire and rescue service to check if an evacuation alert system is required or is advisable in your property, so we can all play our part in creating a safer future.



# Advanced – Made in the UK. Trusted around the world

Advanced designs and manufactures specialist fire equipment that protects lives and property in more than 80 countries across the globe.

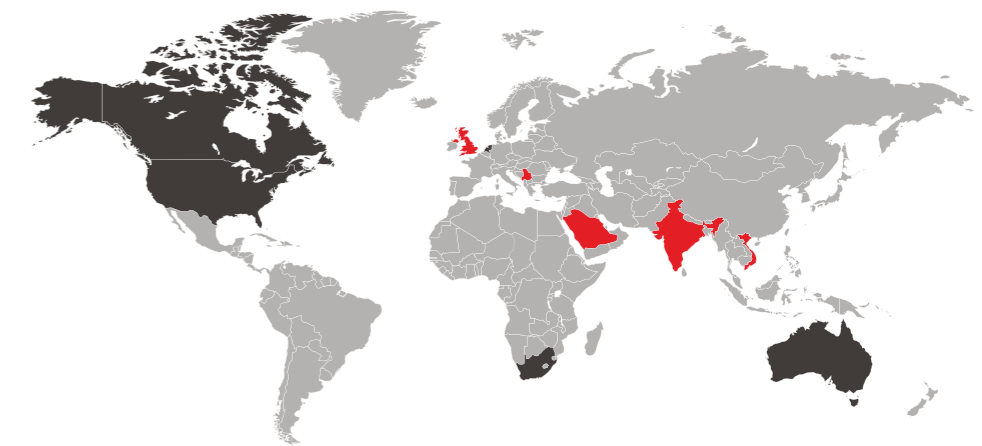


**Our market-leading fire safety solutions are installed in many of the world's tallest – and smallest – buildings, as well as in a wide variety of complex and high-risk sites.**

Decades of research and development have gone into our products, which are known and trusted by customers for their **quality, performance and ease of use.**

We offer an extensive range of panels and devices approved to exacting international quality standards; with every product we make rigorously tested before it leaves us.

We 'mass-customise' our panels, so you can be sure your Advanced equipment meets your exact requirements and provides years of reliable performance and protection – for ultimate peace of mind.



● Advanced & Halma sales representatives

● Strategic and OEM partners

● Distributors and system integrators in key locations worldwide

Knowing that some sites pose unique challenges, we also design and manufacture fully-customised solutions through our AdSpecials service. This flexible approach gives you complete control over the functions, format and finish of products to suit your site's unique specification.

We have an international network of offices and agents so you can easily access sales support wherever you are in the world.

Training and technical support are provided by our in-house team, free of charge, and consistently rated as excellent.

**Advanced is part of the safety sector of Halma plc, a global group of life-saving technology companies with a clear purpose to grow a safer, cleaner, healthier future for everyone, every day.**



# What is BS 8629?



BS 8629 is the British Standards Institution, code of practice for the design, installation, commissioning and maintenance of evacuation alert systems for use by fire and rescue services in buildings containing flats.

The code of practice recommendations are for new buildings containing flats and are equally relevant as best practice for existing buildings too.

## Why has BS 8629 been developed?

In the past, when fires have occurred in a tall residential building with a 'stay put policy' in place, it has been common practice for the fire and rescue service to evacuate the occupants of the affected flat only. On rare occasions, the occupants of nearby or adjacent flats would be evacuated too. Notification has been by means of fire and rescue personnel physically knocking on doors as there was no other effective way of alerting occupants.

When attending a fire incident, initial resources are ideally focused on firefighting. In cases where more widespread evacuation is necessary, having an evacuation alert system in place enables occupants of flats to be effectively alerted by the fire and rescue service's incident commander without diverting efforts away from essential firefighting operations.

## How was BS 8629 developed?

The principles of BS 8629 were formed as part of a review of Scottish Building Standards before the Grenfell Tower tragedy of June 2017. However, its recommendations came into sharp focus following that incident.

On 30 October 2019 the Grenfell Tower Inquiry Phase 1 report was published, and contained recommendations that 'all high-rise residential buildings [both those already in existence and those built in the future] be equipped with the means for fire and rescue services to send an evacuation signal to the whole, or a selected part, of the building by means of sounders or similar devices'.

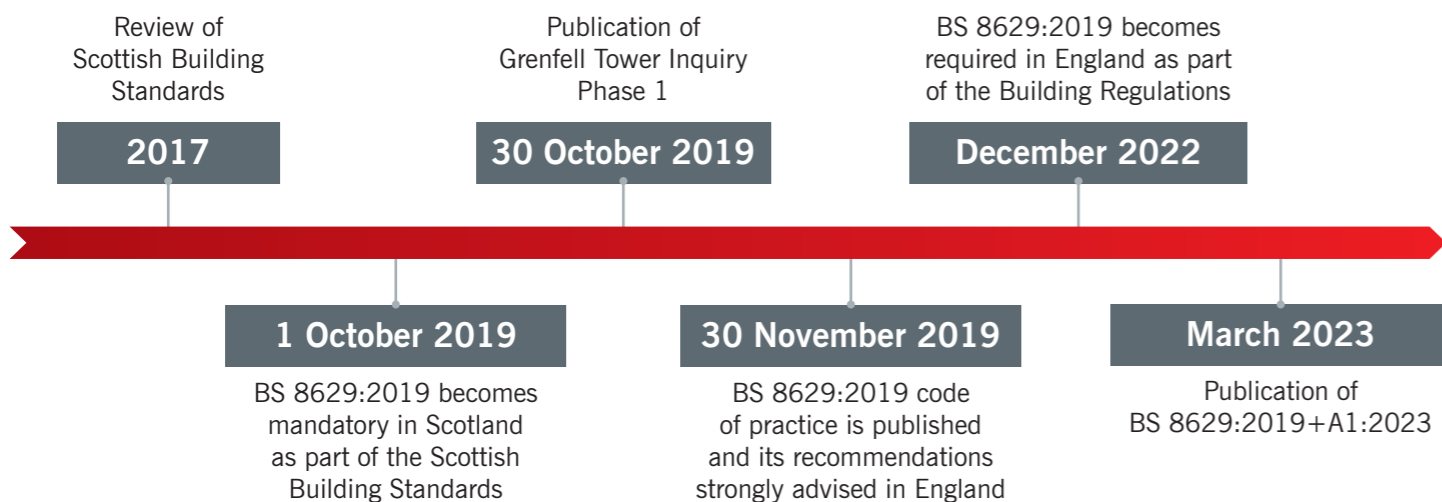
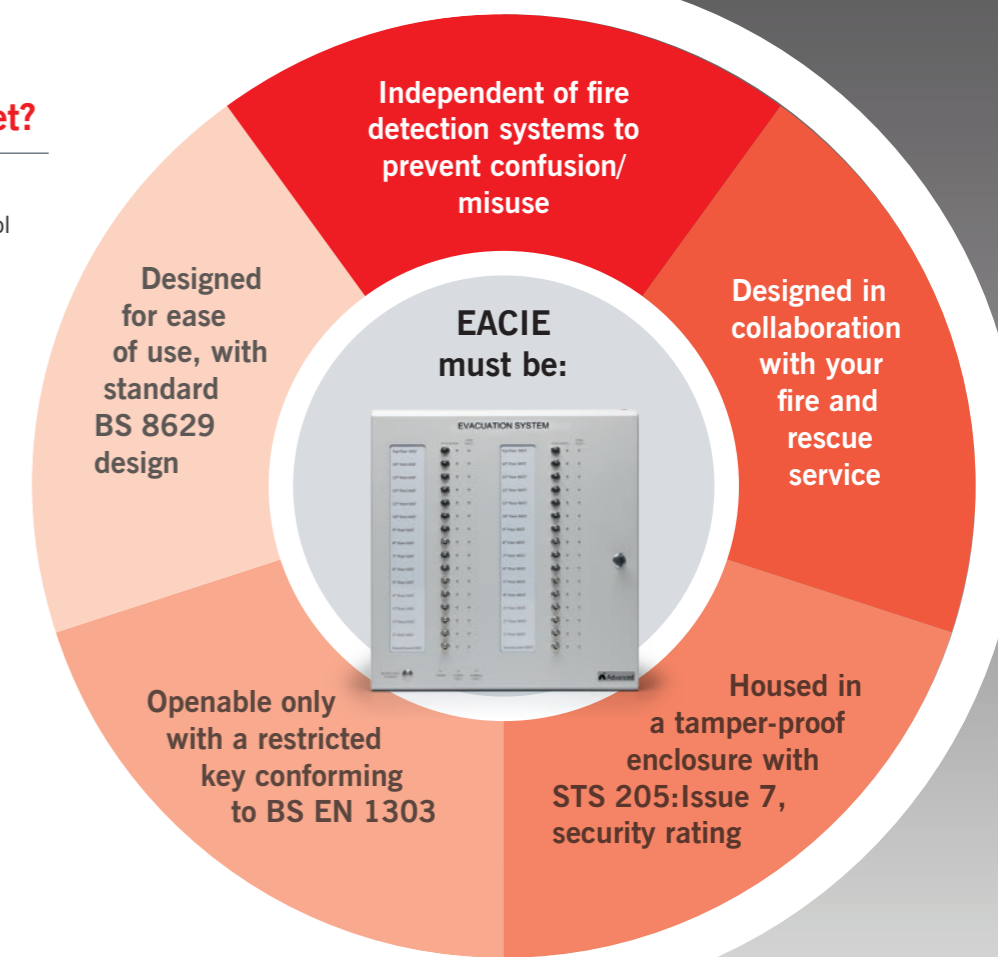
Since 1 October 2019 following the publication of the Phase 1 report, the provision of an evacuation alert system conforming to the BS 8629 code of practice became mandatory in Scotland. From December 2022, it is required in England in accordance with Building Regulations Approved Document B: Fire Safety.



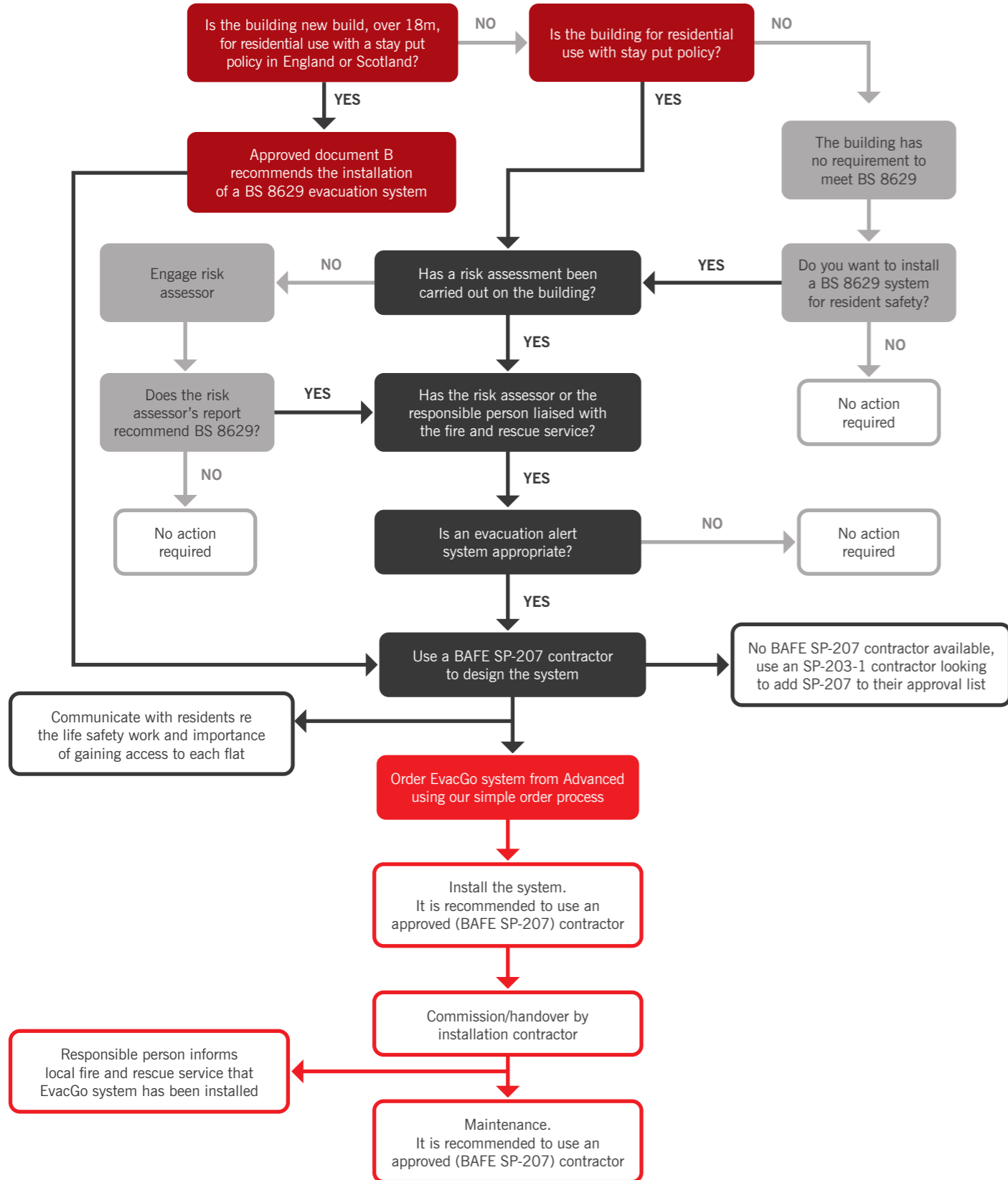
## What are the key points of BS 8629 that I need to meet?

The code of practice recommends the installation of EACIE (evacuation alert control and indicating equipment) which should be independent of fire detection systems and designed to support any evacuation strategy chosen by the fire and rescue service.

The EACIE must be housed in a tamper-proof enclosure, and access must be restricted to use by the responsible person and fire and rescue service only, by means of a special key.



# Do I need an evacuation alert system?



## Are you on top of evacuation alert systems and BS 8629?

Book your free CPD

Since December 2022, amendments to Part B of the Building Regulations have required all new residential developments over 18m to incorporate an evacuation alert system conforming to BS 8629. Our FIA-certified CPD will ensure you understand what you need to do to comply.



You will learn about:

- The BS 8629 Code of Practice and how it applies to high-rise residential blocks in England and Scotland
- How to specify products to meet the BS 8629 Code of Practice
- The scope and definitions of the Code of Practice
- Evacuation system components
- The installer's commissioning, handover and maintenance responsibilities

Simply scan the QR code to choose from the dates available to book your place. After completing the 60-minute session, you will receive a certificate from The CPD Certification Service.



View available dates and book your free CPD place

# Why choose an evacuation alert solution from Advanced?

EvacGo, has been developed with great care to follow all the recommendations of BS 8629.

During product development, we have discussed our solution with the standard's authors, refining aspects of appearance, functionality and operation to ensure full compliance.

All the components used in our evacuation alert panel are the same as those used in our industry-leading MxPro 5 range, so you can be safe in the knowledge you're protecting your site with robust and proven technology that's been rigorously tested to EN 54 Parts 2 and 4 as recommended in BS 8629.

EvacGo is a flexible evacuation alert solution and can be supplied as a full system or a panel only to suit the needs of your building.

You can choose from wired, wireless and hybrid options and the panel is compatible with leading device protocols. Please contact: [sales@advancedco.com](mailto:sales@advancedco.com) for further details.



# Making it easy for you to follow BS 8629

We understand that adhering to new standards can be daunting, so from the moment you enquire about an evacuation alert panel, we ensure the order process is quick and easy to follow.

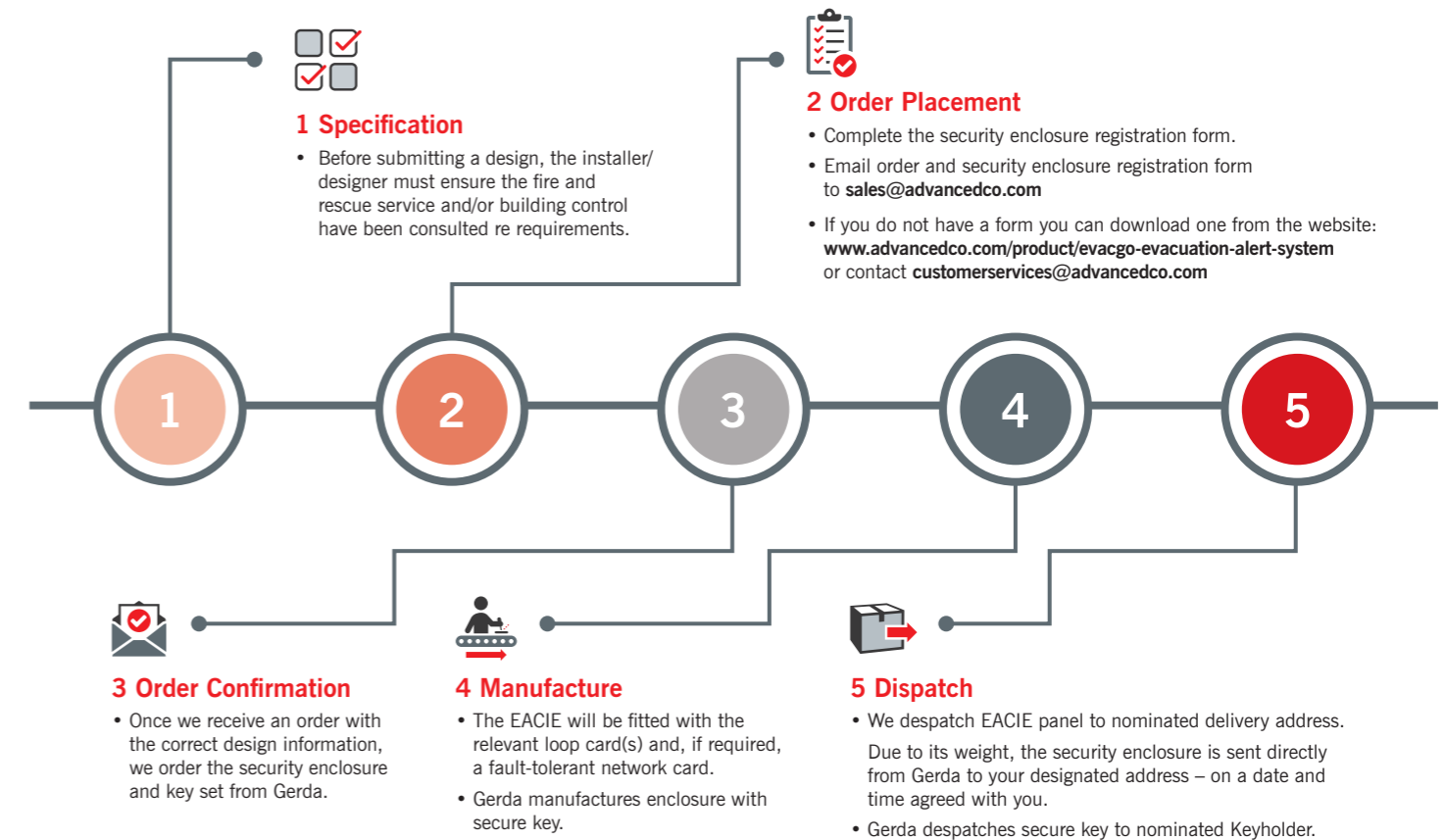
We've developed a simple form highlighting all the steps you need to take to create the right specification for your evacuation alert system – from consultation to design and delivery.

Once the requirements for your site have been agreed with your local fire and rescue service, place your order in the normal way – either direct or via distribution – and we'll clarify the panel specification, quote and timescale and build your evacuation alert panel to order.

We make delivery easy too, as our processes allow for shipment of enclosures, panels, devices and keys\* to the most convenient location(s) and at the best time(s) to suit you.

*\*Please note that the keys for the security enclosure are registered to the persons having day-to-day control of the building (premises management) and will, in all cases, be sent directly to them.*

## 5 simple steps to a BS 8629 solution



**Please note:** If keyholder information is not provided before despatch, the Premises Manager will need to email: [enquiries@gerdasecurity.co.uk](mailto:enquiries@gerdasecurity.co.uk) at the time of handover to arrange delivery of the enclosure keys.

From order confirmation, typical timescale is 10-12 weeks.

# Benefits of EvacGo

1 Toggle switches are easy for fire and rescue service personnel to operate, even when wearing PPE.

2 Toggle switches plus LED indication make it easy for the fire and rescue service to view evacuation zone status and implement evacuation strategies quickly and easily – red indicates evacuation zone and yellow indicates zone in fault.

3 Evacuation alert panel is housed in its own security-rated enclosure to prevent malicious damage. See page 14 for full enclosure details.



4 Slide-in labels make it easy to clearly mark evacuation zones and avoid any confusion.



5 Patented BS EN 1303-compliant lock and key mechanism for exclusive access by the fire and rescue service – ensuring minimal risk of unauthorised use.

1 to 4 loop formats supporting 500 mA per loop for total flexibility.

Built-in battery back-up options – up to 17 ampere-hours, to meet the BS 8629 code of practice recommendations: 72-hours, plus 30 minutes in alarm, or where an on-site generator is present, 24-hours plus 30 minutes in alarm.

Wired, wireless or hybrid system solutions available for maximum versatility.

Commissioning and servicing are quick and easy using our virtual PC tool.

# The tamper-proof enclosure

We've developed our robust, tamper-proof enclosure in collaboration with leading experts in the field, Gerda. Members of the Gerda team worked closely with the authors of the BS 8629 code of practice to develop the specification of the panel housing and ensure maximum security for this critical equipment.



As the evacuation alert system is intended for exclusive use by the fire and rescue service, it is only accessible by fire and rescue service (FRS) personnel using a unique key.

- Enclosure security rating STS 205: Issue 7
- The enclosure must be able to withstand a physical attack from hand tools such as a hammer for 3 minutes
- 'EACIE: For Fire and Rescue Service Use Only' sign fixed to cabinet door
- The patented keylock is operated by copy-protected keys carried by the FRS, meeting BS EN 1303:2015.

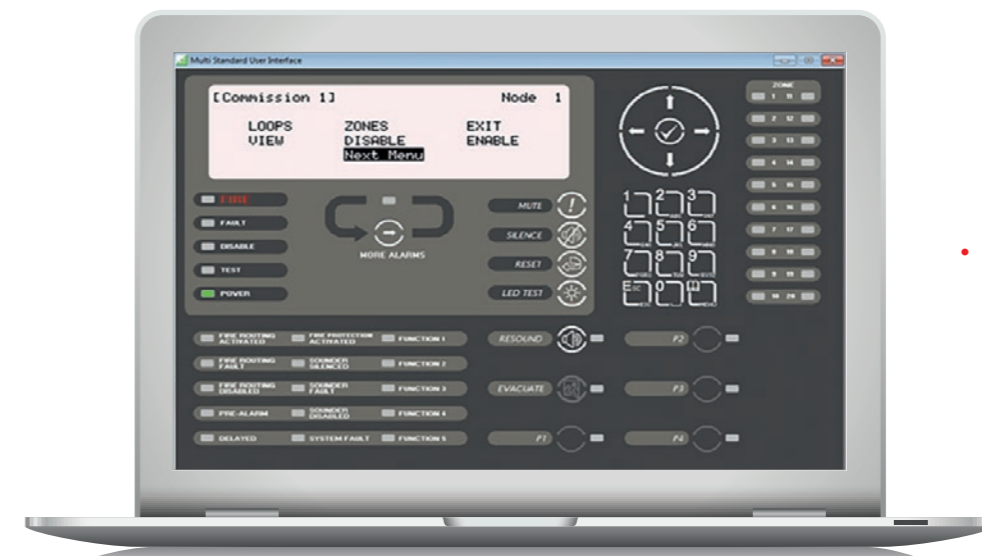
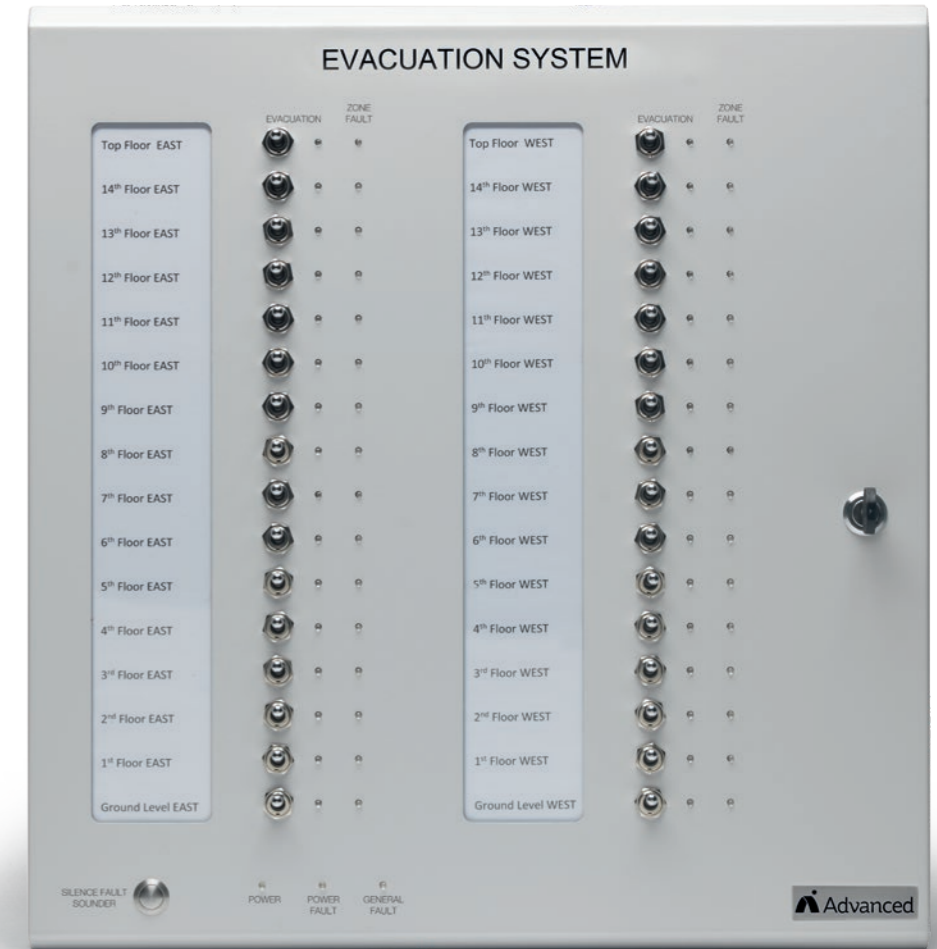


# View panel status

- In the context of BS 8629, text displays are not required for presenting information to the fire and rescue service – a manual control switch with LED is sufficient
- This provides a simple, 'at a glance' overview of which evacuation zones are operating, with no need for manual intervention

However, service and maintenance engineers do need access to more detailed information.

- The virtual display enables the maintenance engineer to work on the panel remotely
- All programming and servicing can be undertaken on a laptop connected to the EvacGo using Advanced's DynamixTools PC programming software.



- Intuitive programming software for easy programming and servicing



# Design considerations

The BS 8629 code of practice provides comprehensive information on matters relating to installation and configuration and should be consulted for full details.

**For ease, the following acts as a summary of some critical considerations:**

**Evacuation alert systems:**

- Are independent of the fire detection system and intended for use by the FRS only
- Are intended as a tool to assist the FRS in evacuating a building
- Must be designed in consultation with the FRS
- Must include evacuation alert sounders in each flat that are operated by the FRS via the EACIE only
- Must not incorporate automatic fire detectors or manual call points
- Should not interface with other systems or equipment e.g. lifts, gas valves, air handling systems, smoke control systems
- Can interface with radio transmission equipment for the hard of hearing, a social alarm system, equipment for transmission of a fault to a remote location or a system status including diagnostic and test facility
- In the absence of a British, European or international standard for the Evacuation Alarm Control and Indicating Equipment (EACIE) to be certified against, the EACIE must be 'fit for purpose'
- There should be a clear visual indication within or immediately adjacent to the EACIE cabinet, of any flats that do not have an evacuation alert sounder fitted.

**In buildings with 10 storeys or fewer:**

Two simultaneous faults on an evacuation alert device circuit **should not** disable the evacuation alert devices on **more than half** the number of storeys with flats

**In buildings with 10 storeys or more:**

Two simultaneous faults on an evacuation alert device circuit **should not** disable the evacuation alert devices on **more than a third** of the number of storeys with flats

# The importance of evacuation alert zones

The design of each EvacGo is based on the number of evacuation alert zones required in the building where it will be used. Why is this important?

Evacuation alert systems are particularly critical in larger and more complex buildings where the fire and rescue service may decide to evacuate all of the flats on one (or more) storey(s) or only one part of a single storey containing many flats.

To support these scenarios, the building needs to be divided into a number of individual evacuation alert (EA) zones. This ensures that EA device status in one EA zone is independent of the status of EA devices in all other EA zones.

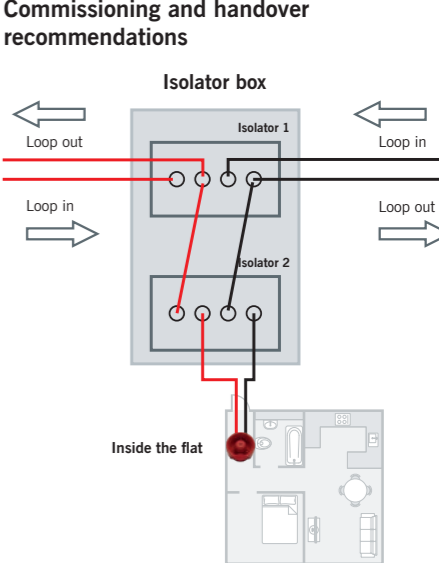
By grouping EA devices in this way, occupants of one EA zone required to leave the building can be told to do so without alerting occupants in areas required to 'stay put'. To support this ability, it's important that the evacuation alert signal in one EA zone is not readily audible in any other EA zone.

**If a fault or short circuit occurs on an EA device in a flat or a number of flats, the fault should only affect the flat in which the fault occurs. All other flats should not be affected.**

- Evacuation alert zone recommendations**
- Each evacuation alert (EA) zone must operate independently
  - The EA signal in one zone must not be readily audible in another
  - No EA zone should extend beyond a single storey of the building
  - A common EA signal should be used throughout all EA zones
  - No two-stage EA signals should be given
  - Premises management should ensure the fire and rescue service agrees the configuration of EA zones and, where relevant, the appropriate building control body should be consulted too.

- Evacuation alert sounders and audibility**
- The EA signal needs to be:
    - clearly distinguishable from any other alarm signal
    - at least 60dB in habitable rooms with door closed and should be at least 85dB at the doorway of each bedroom (with the door open)
  - A single EA device (sounder – with or without visual alert) within each flat will usually be sufficient
  - Where additional sounders are needed, a larger number of quieter sounders is preferable to a single very loud sounder
  - Wireless audible devices are permitted.

- Evacuation alert isolators**
- The configuration of the evacuation alert system requires a different approach to that of a normal BS 5839 Part 1 system. Please ensure you have a complete proposal, or ask for guidance
  - The addition of two standalone isolators per flat is one way that you can meet the BS 8629 installation requirements.

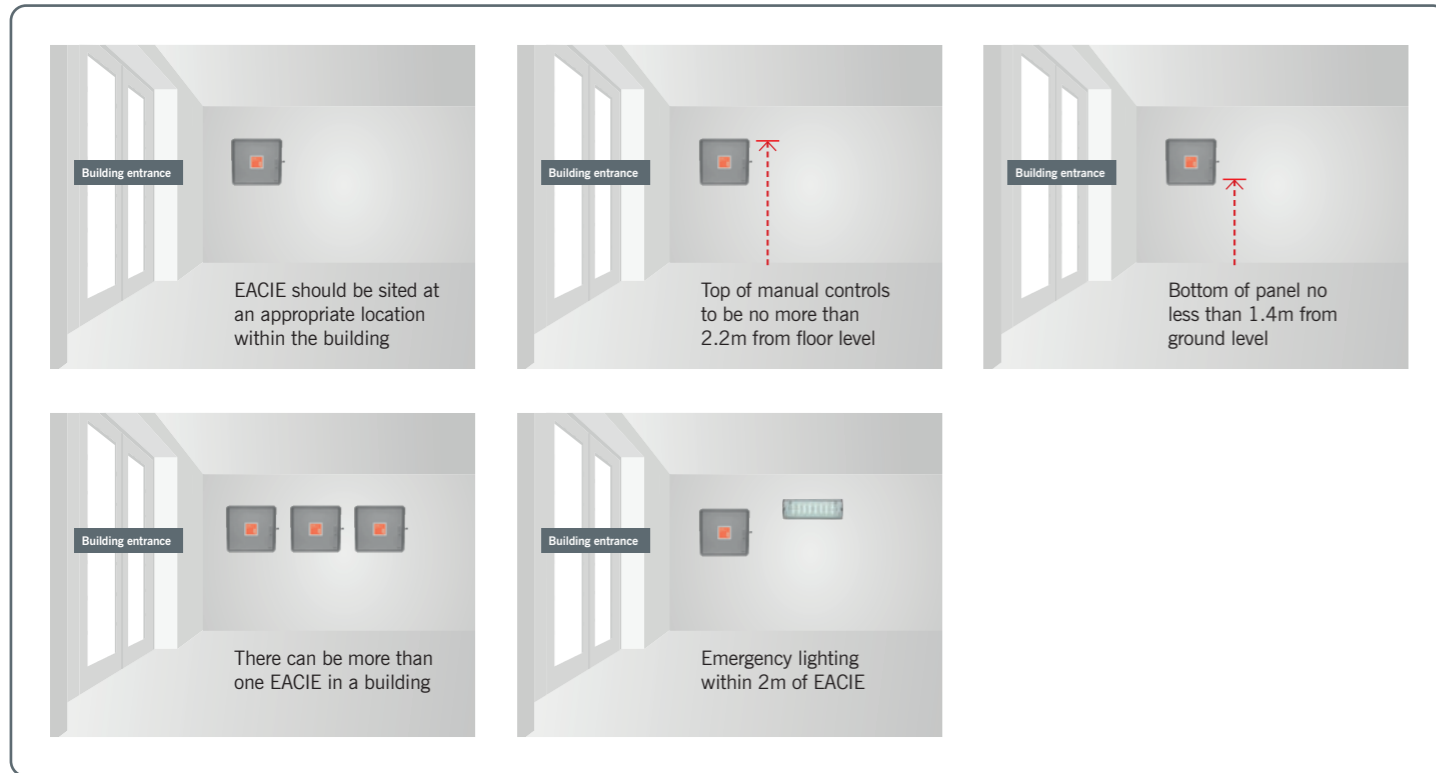


- A competent person should commission the system. During commissioning they should check:
- Sound pressure levels in all flats
  - All manual controls (toggle switches) and LEDs operate correctly
  - There is adequate labelling for each evacuation alert zone
  - Long-term maintenance consumables are itemised and included in handover pack.
- Once commissioning is complete, a certificate is issued to premises management – signed by the competent person confirming the system's conformity.

# Siting the evacuation alert panel

The EACIE should be sited inside the building in a location where fire fighters, responding to a fire, can easily find and operate the controls and see its indications.

This will normally be on a wall close to the building's normal fire and rescue service entry point and should be readily accessible at all times.



## Siting the evacuation alert devices

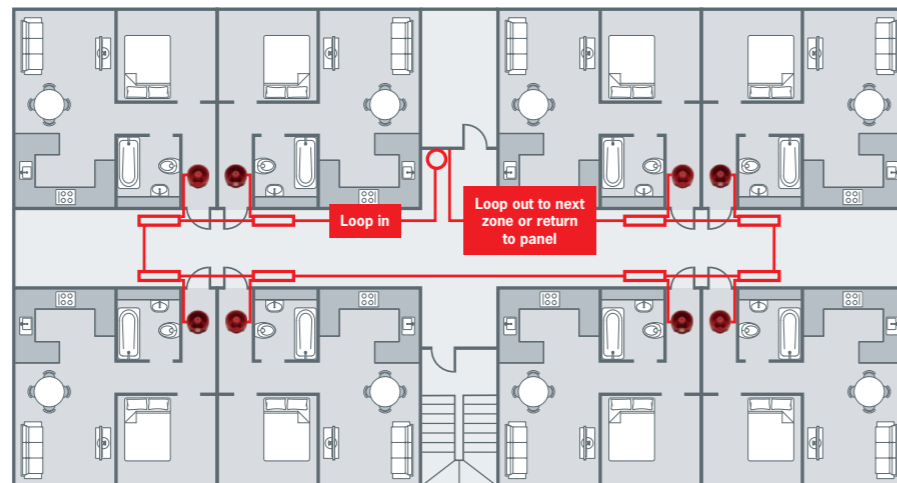
There are two key considerations when siting evacuation devices:

- Ensuring adequate audibility/visual awareness
- Avoidance of casual tampering.

## Recommendations

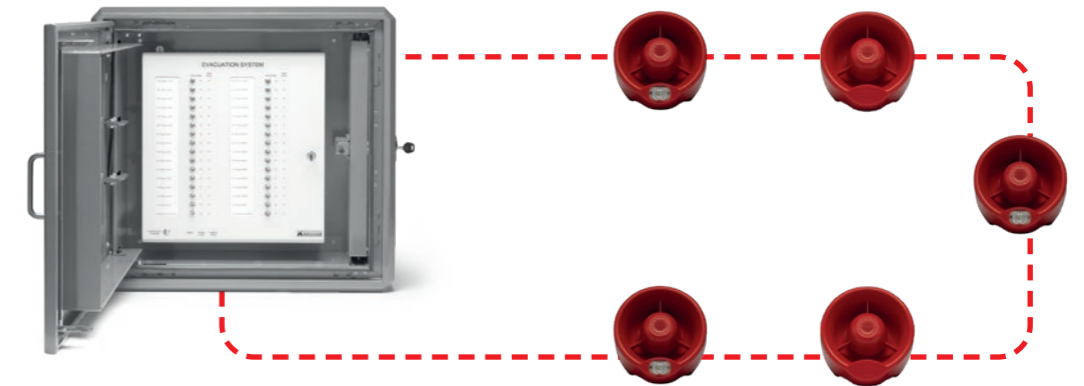
- In every flat, an evacuation sounder should be installed within the hallway and, for larger/open-plan flats, a sounder should also be sited in the room into which the entrance door opens
- All devices should be installed on walls at a height not more than 150mm below ceiling level, or on a ceiling.

## Example layout:



- **Open-area sounder**  
Product code: AXIS-CWS + AXIS-WSM
- **Open-area sounder with beacon**  
Product code: AXIS-CWSV + AXIS-WSM
- **Single boxed isolator module**  
Product code: 20-LVMX100-BX
- **Dual boxed isolator module**  
Product code: 20-DLVMX100-BX
- **Enhanced fire-resistant cable**

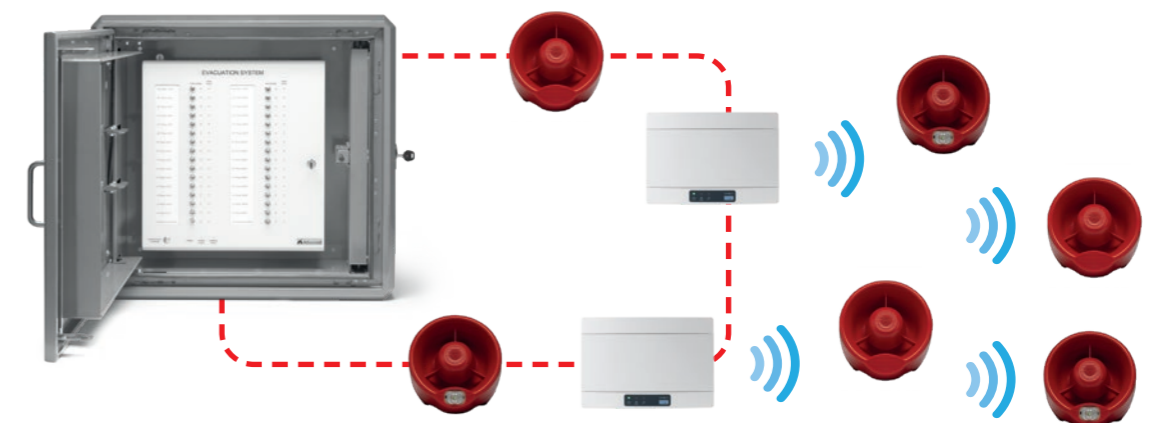
## Example of wired evacuation alert system



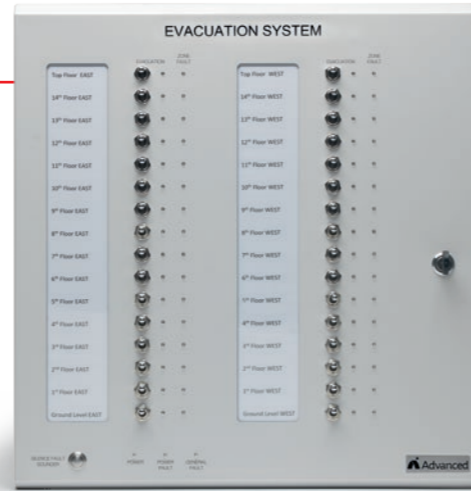
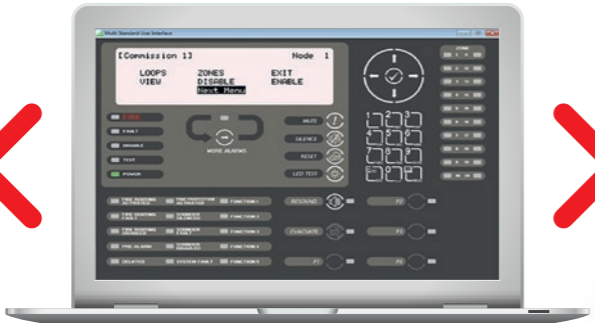
## Example of wireless evacuation alert system



## Example of hybrid evacuation alert system



# ServiceTool



Advanced's powerful ServiceTool can be used to provide proof of testing at handover and for use on regular testing in line with the Certificate of Performance.

## Powerful, flexible service reporting



View a panel's complete device history including when it was installed and last:

- Activated
  - Disabled
  - Tested
  - Enabled.
- ✓ Provides proof of a panel's status at any given point in time e.g. on commissioning.
  - ✓ All data is stored, so none is overwritten and lost.

Complete device history information includes:

- When a device was created onto the system
- When a device was last tested and last activated.

## User-friendly, Windows-based software



Easy-to-create, customised service reports

Choose the data you want to extract from the panel using a wide range of filters.

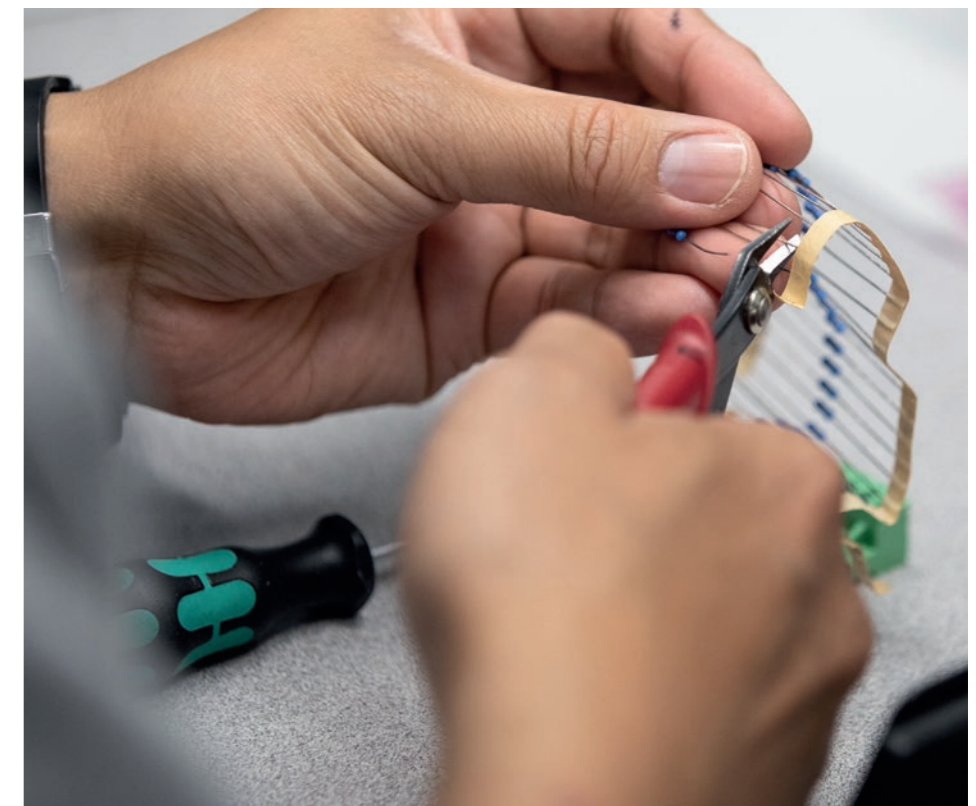
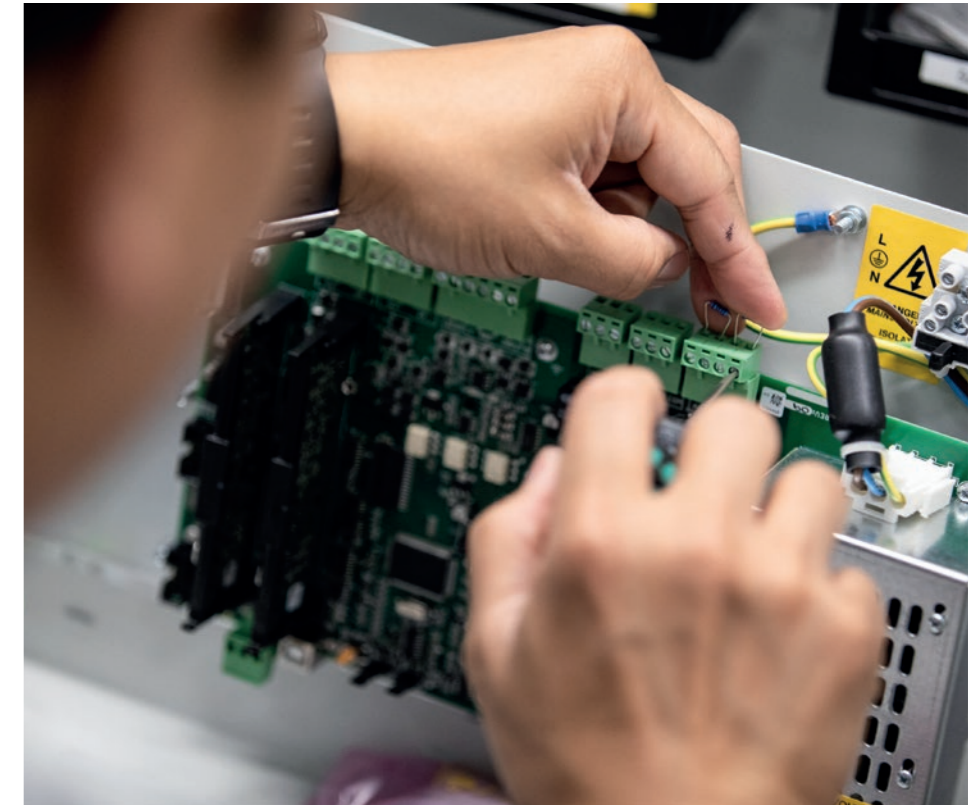
- ✓ Create completely customised reports in PDF, Excel and HTML formats that are easy to use, send, store and compare.

# Every evacuation panel is hand built

All our EvacGo panels are built to order in our UK factory by our team of specialist, multi-skilled engineers.

Each team member is highly experienced and pays meticulous attention to detail on every project.

Choosing an Advanced evacuation alert panel ensures you're buying a product that has been manufactured and tested to exacting standards, so you can enjoy complete peace of mind that your building is in safe hands.



# From temporary ‘simultaneous evacuation’ to ‘stay put’ – with ease

If you’re looking for the safest and most cost-effective way to support a temporary change to a ‘simultaneous evacuation’ strategy in blocks of flats undergoing remedial cladding work, we have the solution.

**Replacing combustible external wall systems is now a top priority, but ensuring residents are safe from fire before, during and immediately after remedial work is completed, presents many challenges.**

Our approach ensures you’re following the National Fire Chiefs Council recommendations for best practice as well as ensuring easy conversion to the BS 8629 code of practice after the ‘stay put’ policy is reinstated.

Following agreement with a competent person that installing a ‘common fire alarm’ is the right solution for the building, a BS 5839 Part 1, category L5 fire alarm system should be fitted – before cladding removal starts.

Advanced’s MxPro 5 fire panels are fully compliant with all the required standards and deliver unrivalled performance, quality and ease of use.

Intuitive programming, comprehensive cause and effect, powerful diagnostic

features and compatibility with four leading detector protocols bring the highest levels of protection for residents – and peace of mind for you.

Once cladding removal is complete, returning your building to ‘stay put’ status is easy.

As our EvacGo evacuation alert panel is designed using MxPro 5 technology, swapping your fire alarm system to an evacuation alert system couldn’t be simpler – whether you’re using wired, wireless or hybrid devices.



Stay put.

If high fire risk cladding is identified, a stay put policy is no longer suitable

Temporary simultaneous evacuation in place while cladding is removed supported by MxPro 5 automatic fire alarm and detection system

Stay put reinstated after cladding is removed, supported by wired EvacGo system

OR

Stay put reinstated after cladding is removed, supported by wireless EvacGo system

For further guidance or to discuss the specific requirements for your site, contact [EvacGo@advancedco.com](mailto:EvacGo@advancedco.com) and we’ll help you to create a fully-compliant solution that seamlessly takes you from ‘stay put’ policy to ‘temporary simultaneous evacuation’ and back again.

Email: [EvacGo@advancedco.com](mailto:EvacGo@advancedco.com)

# Features of the Advanced evacuation alert system



# EACIE panel

The EACIE (evacuation alert control and indicating equipment) meets BSI's recommended design considerations and is supplied with an STS 205-rated robust steel enclosure (see following page).

The panel is modular in construction and should be sited at an appropriate location suitable for firefighter access.

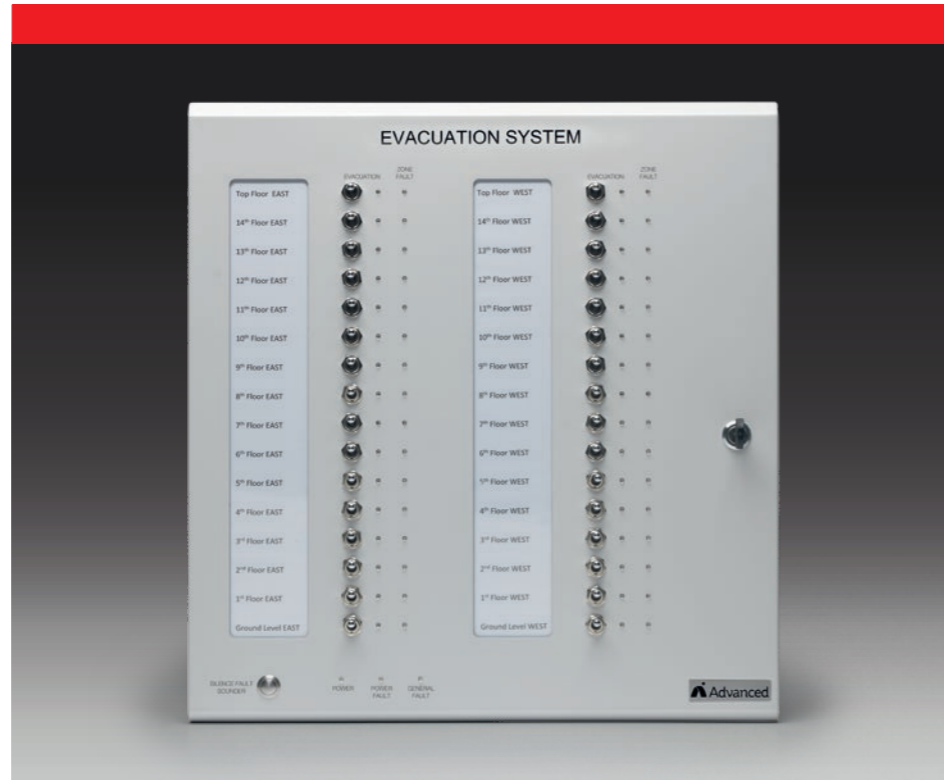
The panel is supplied with 8, 16, 24 or 32 fire fighter evacuation alert areas as standard, and is fully expandable from 1 to 4 loops.

The panel provides a simple, 'at a glance' overview of which evacuation zones are operating.

All programming and servicing can be undertaken on a laptop connected to the EvacGo panel using Advanced's DynamixTools PC programming software.

## Features

- Modular construction
- Can be customised on site if required
- Fully expandable from 1 to 4 loops
- Supplied with 8, 16, 24 or 32 fire fighter evacuation alert areas as standard
- Control panel with latest dual flash-based microprocessor technology
- Robust steel enclosure
- Suitable for a wide range of site applications
- Virtual screen for simple ease of use and remote programming and servicing
- Fully programmable on site
- Three-year warranty.



# Enclosure



The enclosure is a locked cabinet which is purpose-made to accommodate the EvacGo panel and to house the necessary equipment. It meets the enclosure security rating STS 205:Issue7 for resistance class BR2 (4mm steel).

The enclosure has a patented key lock, with the fire and rescue service holding one key and the other key held by premises management.

## Features

- Inner box has space for backup batteries
- Maximum battery size is 2 x 17Ah
- Protected access by fire and rescue service
- 'EACIE: For Fire and Rescue Service Use Only' sign fixed to cabinet door
- Lock cylinder is compliant with BS EN 1303:2015, digit 7 (key related security), grade 6 and digit 8 (attack resistance) grade D.



# Advanced evacuation alert sounders



## Open-area conventional wall sounder

Available in red (Axis-CWS) or white (Axis CWS/W). The sounder can be used on its own as a standalone conventional device or as an intelligent unit with the addition of our addressable sounder interface module.

### Features

- Maximum sound output 100 dB(A)
- Audible frequency range 440 Hz – 2900 Hz (dependent upon tone selected)
- Approved for outdoor use to EN54-3 (type B)
- 32-tone settings
- Weatherproof to IP65
- High sound-output capability
- Four adjustable volume settings
- Must order with our intelligent sounder interface module (Axis-WSM) to be addressable – simply insert the module into the base of the beacon
- Extremely low current
- Embedded microphone for self-test facility
- Available in red or white.



## Open-area conventional wall sounder beacon (VAD)

Available in red (Axis-CWSV) or white (Axis-CWSV/W). The sounder beacon can be used on its own as a standalone conventional device or as an intelligent unit with the addition of our addressable sounder interface module.

### Features

- Maximum sound output 100 dB(A)
- Audible frequency range 440 Hz – 2900 Hz (dependent upon tone selected)
- Visual alarm device frequency 0.5 Hz
- Approved for outdoor use to EN54-3 (type B) and EN54-23
- 32-tone settings
- Weatherproof to IP65
- High sound-output capability
- Silent sounder setting for beacon-only use
- Four adjustable volume settings
- Must order with our intelligent sounder interface module to be addressable – simply insert the module into the base of the beacon
- Extremely low current
- Embedded microphone for self-test facility
- Available in red or white.



## Intelligent sounder interface module

The sounder interface module (Axis-WSM) is designed to make the conventional wall sounder (Axis-CWS) and conventional wall sounder beacon (Axis-CWSV) addressable and to allow their use on an intelligent loop. The well-proven adaptive radio signal processing algorithms ensure the highest levels of life safety and reliability.

Simply mount the back box onto the wall, insert the intelligent sounder interface module into the back box and then fit the sounder on top.

### Features

- Flexible modular design
- Easy to install
- Manual and auto addressing options
- Built-in short circuit isolators
- Microphone self-test facility
- Fits the open-area conventional wall sounder and sounder beacon, making them addressable and loop powered.



## Handheld programming unit

The handheld programming unit (Axis-PU) allows you to set and read the programmable variables of the devices in your system including the loop address.

When used with the connection lead, you can program/read information from call points and sounders, add loop addresses or program one of the sounder's operating modes.

### Features

- Easy to use for all programmable variables from the device range including the loop address
- Select the required device number to program or adjust the device parameters if required
- Built-in keypad and display
- Change the heat detector setting from rate of rise to high temperature
- Read the firmware version of a device and other data
- Clear device display
- Auto shut-off to save battery
- Displays the sensor analogue values
- Includes programming cables for backwards compatibility.

# Advanced evacuation isolators



## Single relay output module with built-in isolator

The single output module (20-VMMC120-ADV) is loop-powered, designed around a fully digital protocol and provides a fast and secure response. The output channel is monitored and detects open and short-circuit conditions. Connections are made using plug-in terminal blocks.

### Features

- Built-in short circuit isolators
- Approved to EN54-17
- Auto-addressing capability (by the control panel) or manually using the handheld programming unit
- Digital checking of double address
- Bicolour (red/green) LED driven by the control panel.



## Wall mounting single relay output module

The single channel output module (20-VMC120-ADV) is loop-powered, designed around a fully digital protocol. The output is a normally de-energised relay switched on by a command from the control panel. The unit provides a fast and secure response, and incorporates a bidirectional short-circuit isolator.

### Features

- Short-circuit isolators in each device approved to EN54-17
- Auto-addressing capability (by the control panel) or manually using a handheld programming unit
- Digital checking of double address
- Bicolour (red/green) LED driven by the control panel.



## Single boxed isolator module

The single boxed isolator module (20-LVMX100-BX) is designed to provide protection against short circuits and faults in flats and apartments, in single-floor evacuation zones.

### Features

- Designed to operate with EvacGo control panels
- Passive device, does not need to be addressed
- Isolates the adjacent loop section where the short circuit occurred
- If activated the remainder of the loop continues to operate normally
- Restores power to the isolated loop section when short circuit is removed
- Designed to comply with the BS 8629 Code of Practice.



## Dual boxed isolator module

The dual boxed isolator module (20-DLVMX100-BX) provides protection against short circuits and faults in flats and apartments.

### Features

- Designed to operate with EvacGo control panels
- Passive device, does not need to be addressed
- Isolates the adjacent loop section where the short circuit occurred
- If activated, the remainder of the loop continues to operate normally
- Restores power to the isolated loop section when short circuit is removed
- Designed to comply with the BS 8629 Code of Practice.

# Frequently asked questions

## Considerations when ordering

### 1. Can I buy the full evacuation alert system from Advanced?

EvacGo is available as a full system or panel only. There are flexible options to suit your building needs; you can choose from wired, wireless and hybrid options and the panel is compatible with leading device protocols – Apollo, Argus and Hochiki. Contact your regional sales manager to discuss your building needs and whether the full evacuation alert system or the EvacGo panel will work best for you.

### 2. The standard was meant for new build, but I've got to look at a retrofit project. What should I be asking to get a price?

Talk to your local building control and fire and rescue service about the evacuation strategy for the building. Their responses will determine the number of evacuation zones you need; the design of individual flats will determine the number of sounders needed for each flat. For further assistance contact our technical support team on: +44 (0)345 894 7000 or by email: [tech@advancedco.com](mailto:tech@advancedco.com).

### 3. Can Advanced issue me with a template which details the questions I need to ask in order to prepare a specification for the panel(s) I need?

Yes. Please contact your regional sales manager who will be happy to provide you with a template and answer any initial questions you may have.

### 4. What is the typical delivery time?

As each panel is made to individual specifications, manufacture is estimated to take 10 to 12 weeks from order confirmation. Please speak to your regional sales manager for individual delivery estimates.

### 5. Are there any limitations to the EvacGo panel that would mean I need more than one on a particular site?

There is no direct limitation. The EvacGo panel is a modular build and the loops can be expanded according to the size of the building. Additional enclosures can be mounted alongside but should also be in parallel (allowing sufficient access for the key which is side entry) in line with the recommendations (min/max mounting heights).

### 6. If I have more than one panel on site, will each one require its own individual key or can one key fit all?

Each box has its own key specific to its locking mechanism. On order fulfilment Gerda will issue a key directly to the local fire brigade and premises management. This needs to be considered when placing an order, as premises management has to be identifiable so that the key can be issued directly.

### 7. If the EvacGo key is lost or stolen during servicing how can it be replaced without compromising the evacuation panel?

When the security enclosure is ordered a key will be issued by Gerda to premises management. It is important not to lose the key as a potentially expensive replacement may be required to access to the enclosure for servicing and maintenance. To purchase a replacement key, please contact Gerda.

## Meeting the standard

### 8. The security of the outer enclosure needs to meet STS 205: Issue 7 class BR2 – how does Advanced achieve this?

Advanced has partnered with cabinet specialists Gerda and is using their patented lock and box to provide an outer housing for the control equipment that meets the standards set out in BS 8629.

### 9. How many evacuation zones can I have?

The Advanced solution is available in 8/16/24 and 32 zonal configurations. If your building has more than 32 evacuation zones, you will need a second controller.

### 10. Is your BS 8629 solution certified?

The BS 8629 Code of Practice calls for equipment that meets EN54 Parts 2 and 4. While it is not possible to certify a product to a code of practice, the Advanced evacuation control panel is based on the MxPro 5, which meets EN54 Parts 2 and 4. The outer housing is tested by Gerda to ensure it meets LPS1175.

### 11. Can the panels be flush-mounted into the wall and still meet the standard's recommendations?

No. The keylock is side entry to maintain the integrity of the enclosure and locking mechanism provided, so must be surface mounted.

### 12. Can I combine an automatic fire detection system with an evacuation alert system?

Clause 13.2.3 (a) of the BS 8629 standard states: No fire detection and fire alarm equipment should be connected to the EACIE e.g. manual call points, fire detectors or fire alarm control and indicating equipment. However, we are often asked if a temporary fire detection and alarm system could be re-configured to be an evacuation alert system and that is permitted, providing it meets clause 13.2.3.

### 13. What size batteries can I fit into the enclosure?

17Ah batteries can be fitted as standard. However, please ensure loop and battery calculations are performed prior to placing an order as a separate battery enclosure may be required mounted locally to the EvacGo. If the site has an auto starting backup generator and the building is manned by a member of the premises management 24/7, then 24hr standby is required. If not, 72hr standby is required, but this would make a significant impact on your battery back-up. If a battery enclosure for standby batteries is sited in an area accessible to unauthorised persons, the enclosure should be secure and satisfy the same recommendations as on page 25 of the EvacGo brochure.

## Installation

### 14. Whose responsibility is it to consult with the fire and rescue service (FRS) for each installation?

Section 5 of the code of practice recommends that premises management or the purchaser of the system (or an appointed representative of these parties such as a consultant) consult the FRS prior to the system design stage.

### 15. If the main fire control panel is installed out of sight of the main entrance, with a repeater unit located in the main entrance, can the EvacGo panel be installed in the same place as the fire panel?

The EvacGo panel must be installed in a location identified in consultation with the fire brigade and premises management (Code of Practice Section 13.2.1 (b)). Typically, this would be in close proximity to the normal fire and rescue service entry point.

### 16. Should each installation have a system for the hard of hearing as well?

Potentially yes. In every flat, it should be possible to easily install additional evacuation alert devices for the hearing impaired. This is identified in section 11.2 of the Code of Practice. For example, this could consist of I/O devices or a junction box to which vibrating pillow pads etc. can be connected.

### 17. Who provides the radio site survey if using a wireless system?

You should contact the supplier of the wireless equipment for a suitable site survey. Any building requiring radio equipment should always be surveyed as best practice.

## Training & Support

### 18. How do I get to access level three to commission/service the system?

This is accessed using the PC-NET-004 remote terminal tool. If you need support with this please contact our technical support team on: +44 (0)345 894 7000 or by email: [tech@advancedco.com](mailto:tech@advancedco.com).

### 19. How do I arrange engineer training on the evacuation control panel?

We offer a dedicated training course on the EvacGo panel, please scan the QR code on page 32 to book training.



# EvacGo training



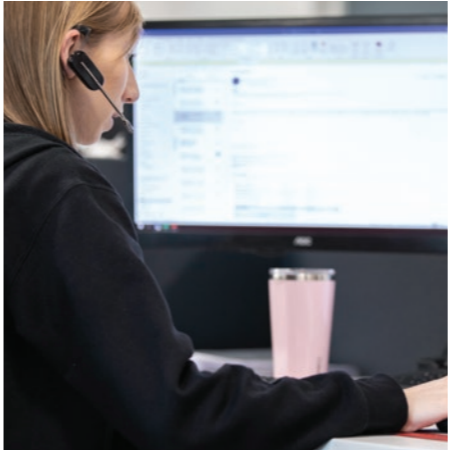
We offer a wide range of training courses, conducted both in person and online.

Our dedicated course on the EvacGo panel includes the following topics:

- EvacGo control panels
- Sounders and isolators
- Installation and maintenance
- PC configuration



Book your free online training



# Technical support

Highly rated customer support. Available by telephone and online.

As an Advanced customer, you have access to a host of helpful advice and support.

This includes a wealth of online information, from 'how to' videos to datasheets and detailed product manuals. Simply complete one of our online forms and you'll be able to access a range of additional services, previously available to those with an Advanced360 account.

**Services include:**

- **Technical support** – available by phone and online from one of our experienced technical support engineers.
- **Training** – view dates available. Direct customers can book training online and will be sent training certificates by email. If you need to access a previous training certificate, simply complete an online request form. All non-direct customers should book training through their distributor.



- **Software** – download software and save your software packages by installation/site.
- **Literature** – download manuals, specifications, approved partner certificates, technical information and more.
- **Warranty** – Download our warranty statement.

[advancedco.com/training-support](http://advancedco.com/training-support)

# Order codes and options

Product Code	Description
SP-8629-08	EvacGo controller c/w 1 loop card expandable to 4 and 8 evacuation zones including LED indication. Designed to meet BS8629 including the outer security enclosure meeting STS 205 class BR2
SP-8629-16	EvacGo controller c/w 1 loop card expandable to 4 and 16 evacuation zones including LED indication. Designed to meet BS8629 including the outer security enclosure meeting STS 205 class BR2
SP-8629-16-2C	EvacGo controller c/w 1 loop card expandable to 4 and 16 evacuation zones including LED indication (2 columns of 8 LEDs). Designed to meet BS8629 including the outer security enclosure meeting STS 205 class BR2
SP-8629-24	EvacGo controller c/w 1 loop card expandable to 4 and 24 evacuation zones including LED indication. Designed to meet BS8629 including the outer security enclosure meeting STS 205 class BR2
SP-8629-32	EvacGo controller c/w 1 loop card expandable to 4 and 32 evacuation zones including LED indication. Designed to meet BS8629 including the outer security enclosure meeting STS 205 class BR2
SP-8629-08/FT	EvacGo controller c/w 1 loop card expandable to 4, designated fault tolerant network card and 8 evacuation zones including LED indication. Designed to meet BS8629 including the outer security enclosure meeting STS 205 class BR2
SP-8629-16/FT	EvacGo controller c/w 1 loop card expandable to 4, designated fault tolerant network card and 16 evacuation zones including LED indication. Designed to meet BS8629 including the outer security enclosure meeting STS 205 class BR2
SP-8629-16-2C/FT	EvacGo controller c/w 1 loop card expandable to 4, designated fault tolerant network card and 16 evacuation zones including LED indication (2 columns of 8 LEDs). Designed to meet BS8629 including the outer security enclosure meeting STS 205 class BR2
SP-8629-24/FT	EvacGo controller c/w 1 loop card expandable to 4, designated fault tolerant network card and 24 evacuation zones including LED indication. Designed to meet BS8629 including the outer security enclosure meeting STS 205 class BR2
SP-8629-32/FT	EvacGo controller c/w 1 loop card expandable to 4, designated fault tolerant network card and 32 evacuation zones including LED indication. Designed to meet BS8629 including the outer security enclosure meeting STS 205 class BR2
SP-8629-00/FT	EvacGo controller c/w 1 loop card expandable to 4, designated fault tolerant network card in a large enclosure with NO display
SP-8629-00/D/FT	EvacGo controller c/w 1 loop card expandable to 4, designated fault-tolerant network card in deep enclosure with NO display
MXP-502	EvacGo additional loop card
MXM-546	EvacGo separate battery enclosure (45Ah) – if required
MXP-501	EvacGo remote battery temperature sensor
AXIS-CWS	Open area conventional wall sounder – Red (EN54-3)
AXIS-CWS/W	Open area conventional wall sounder – White (EN54-3)
AXIS-CWSV	Open area conventional wall sounder beacon – Red (EN54-3 & EN54-23)
AXIS-CWSV/W	Open area conventional wall sounder beacon – White (EN54-3 & EN54-23)
AXIS-WSM	Addressable sounder interface module (EN54-17)
AXIS-PU	Handheld programming unit
LVMX100	Short circuit isolator module
20-LVMX100-BX	Single boxed isolator module (1 x per zone)
20-DLVMX100-BX	Dual boxed isolator module (1 x per flat)
20-VMMC120-ADV	Single relay output module with built in isolator
20-VMC100-ADV	Monitored output module with built-in isolator
20-VMC120-ADV	Wall mounted Single relay output module with built in isolator
20-BMB100-BX	Plastic mounting box
SP-8629-SECBX	EvacGo separate battery tray mounted in an STS 205 class BR2 box. Please note – this is only required when the batteries are in a public area, please check before ordering.



In addition to EvacGo, we offer an additional aid to safe evacuation

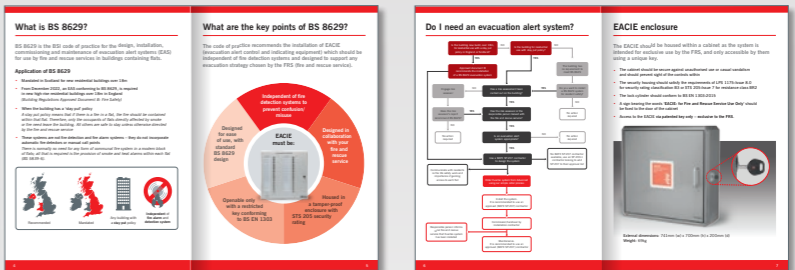
Emergency lighting must be fitted within 2m of the EACIE. LuxIntelligent, the emergency lighting system from Advanced, saves time, money and makes it easy to ensure a compliant system.

Scan to discover our emergency lighting range



## EvacGo pocket guide

Get our quick-reference guide to easy BS 8629 compliance



Scan to download our BS 8629 pocket guide to evacuation alert systems



**Email:** [EvacGo@advancedco.com](mailto:EvacGo@advancedco.com)  
**Web:** [www.advancedco.com](http://www.advancedco.com)



Advanced



Advanced Fire



**NBS Source**  
PARTNER

EvacGo is a trademark of Advanced Electronics Ltd.  
All rights reserved.



**Made in  
the UK**

A **Halma** company