

Contents

About Advanced	4
Advanced Extinguishing Control	6
ExGo Parts	7
ExGo Sample System Diagram	10
Custom-Built Panels	11
Technical Support	11




ExGo Advanced Extinguishing Control

Whatever your fire protection challenge, Advanced brings you unrivalled solutions.

Quality and performance are vital when you're protecting critical infrastructure – and the people who use it – from fire. That's why ExGo gas extinguishing panels from Advanced are now helping to assure the fire safety of the longest sea crossing in the world.

Combining precision engineering with flexible design options and ease of use, ExGo provides a simple, dependable solution to complex fire protection problems in high-risk sites. To find out how the full range of Advanced fire panels and solutions can bring you peace of mind across a spectrum of sites, visit advancedco.com or call us to arrange a demo.

Creating a safer future



Advanced – Made in the UK. Trusted around the world

At Advanced, we're committed to creating a safer future. We deliver fire protection and life safety solutions that protect people and property in more than 80 countries across the globe.

Our products are shaped by decades of research and development expertise as well as ongoing investment in new technologies. This ensures they provide years of high performance and reliability – for ultimate peace of mind.

Everything we deliver is rigorously tested and approved to exacting quality standards – which is why Advanced products are trusted by customers the world over and synonymous with quality, performance and ease of use.



Advanced Headquarters, Newcastle, UK

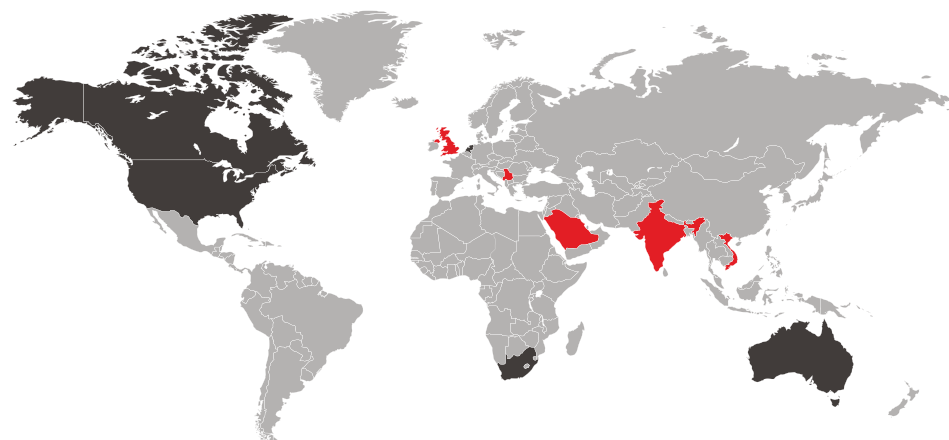
We understand that few fire protection challenges are the same, so as well as our mass-customised ranges, we also offer fully-customised solutions. This flexibility gives you complete control over the functions, format and finish of products to suit your site's unique specification.

We are dedicated to providing excellent service and have an international network of offices and agents to help you access sales support with ease – wherever you are in the world.

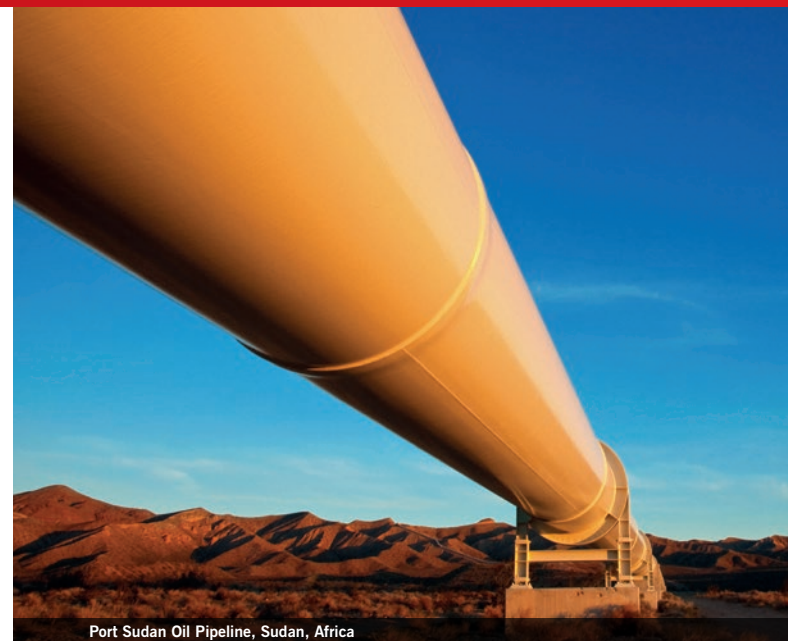


In addition, our training and technical services are free of charge to all our direct customers and consistently rated as excellent.

For added reassurance, Advanced is part of the safety sector of FTSE 100 company Halma plc. This global group of life-saving technology companies has a clear purpose to grow a safer, cleaner, healthier future for everyone, every day.



- Advanced & Halma sales representatives
- Strategic and OEM partners
- Distributors and system integrators in key locations worldwide



Port Sudan Oil Pipeline, Sudan, Africa



Hong Kong-Zhuhai-Macau Bridge, Hong Kong

ExGo protects...



M Station, Dubai



Historical Archives of Belgrade, Serbia



Magna Carta vault at Lincoln Castle, UK



Romanian National Library, Bucharest, Romania

Advanced extinguishing control

ExGo

- is used all over the world to protect sensitive and strategic assets such as server and switch rooms, and historic and cultural collections
- is suitable for almost all single-flooding area applications
- is compatible with a range of control options and devices
- can be used as a standalone system or interface with any fire system
- ExGo is approved to EN12094-1 and EN54



Easy to install and use

ExGo is built on Advanced's outstanding pedigree of fire alarm and detection experience, bringing you an extinguishing control panel that is simple to install, configure and use.

- Removable chassis for easy installation
- Unique intuitive alpha-numeric LCD display menu makes set up simple and easy
- Sensitive circuits are analysed and configured by the panel menu.



Versatile and dependable

Dependability is key and ExGo is robust and easy to trust for the protection of sensitive assets. Its versatility means that it can be used standalone, or integrated into an Advanced MxPro or Axis EN fire system, or with any third-party fire system.

- Huge range of control and programming options
- Compatible with a vast range of conventional detection devices
- Wide range of peripherals including hold and abort buttons
- Approved to EN12094-1 and EN54.



In-built safety measures

For added peace of mind, every ExGo panel includes a number of safety measures.

- Automatic/manual controls to safeguard against accidental/unwanted suppressant release
- Status Indicators enable visibility of the system status inside and outside a protected area
- Large countdown timer on LCD screen
- Sensitive circuits are analysed and configured by the panel menu system and no direct adjustment of electronic components is required.



Packed with functionality

Every ExGo panel comes with a host of advanced features built in as standard.

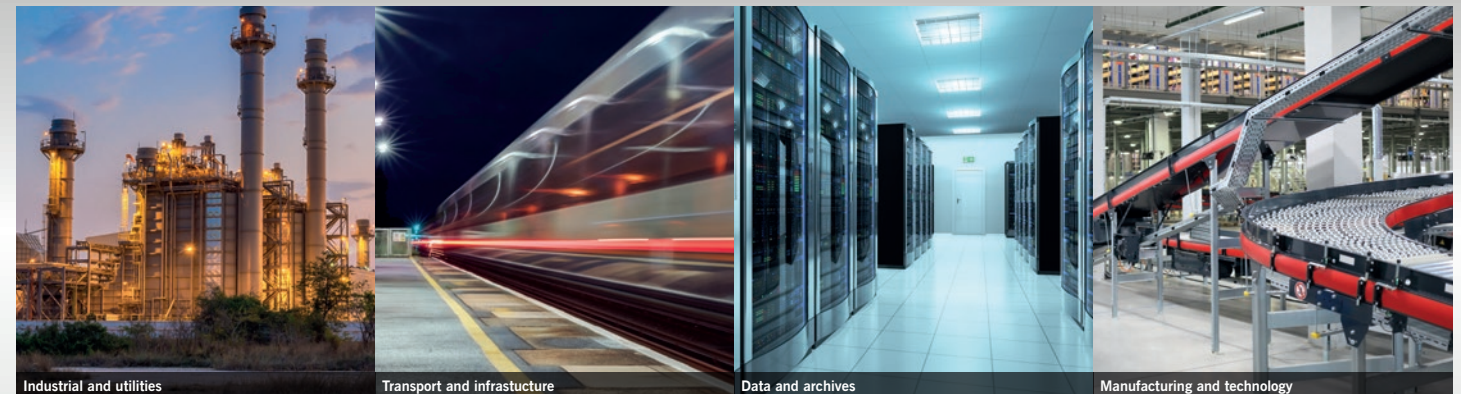
- Diagnostics logging
- Windows-based extraction tool software for efficient management of configuration, control data and event logs
- Time-stamped, customisable event log reporting.



Heritage and landmarks

Public sector

Commercial and retail



Industrial and utilities

Transport and infrastructure

Data and archives

Manufacturing and technology

ExGo Extinguishing Control Panel



- 3 conventional detection zones (inc support for I.S. barrier)
- 1 Flooding/extinguishing zone
- Support for both solenoid and Metron type actuators (1A continuous rating, 3A 15ms pulse)
- Autolearn Actuator Output circuit. No direct manual adjustment required
- Large Countdown timer on LCD screen
- 4 relay outputs (Fire, Fault and 2x programmable) rated 30V DC at 1A max
- 3 sounder circuits 21-28VDC rated at 700mA max
- 2 AUX supply outputs (1 switched), 21-28 VDC each rated at 500mA
- 11 monitored inputs. 4 programmable, 1 manual trigger, 6 Release related (Mode, Valve Monitor, Pressure Monitor, Hold, Abort, Flow)
- Support for monitoring status of a manual isolate valve/ abort input
- RS-485 link to remote status indicators
- Multiple language variants available
- 8 additional programmable relay outputs via EXP-008 relay module
- 3A universal PSU (1A reserved for battery charging). Can be expanded to 5A.
- Pass code or optional key switch for Level 2 access
- Key switch option for mode select (Auto/Manual)
- EN54-2 switch-mode power supply
- 72hr battery standby possible
- Logo tool allows customer logo to be displayed on LCD screen
- 3 year warranty as standard
- Advanced's simple, select and click programming delivers huge configuration options
- 100 Fire/Trigger Events and 500 General Log Events
- Compatible with a wide range of conventional devices
- Approved to EN12094-1 & EN54 2,4 & 13

ExGo Remote Terminals



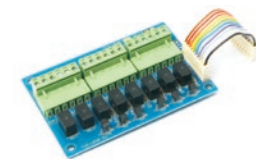
- 2 versions, each with and without manual release
- Up to 7 remote status indicators per one ExGo panel
- Key switch option for mode select (Auto/Manual)
- 12 LED status indicators (Fire, Release, Timer, Disablement, Mode and Fault Indications)
- 2 programmable relay outputs expandable to 4
- Small and compact
- RS485 network connection
- Multiple languages
- Slide in labels
- Surface mount or semi-flush option
- 3 year warranty as standard
- 24V DC supply input

Hold & Abort Buttons



- Simple to install
- Range of finishes available including white, stainless steel and brass trims
- Surface or flush mount
- IP65 option
- Easy connection with dedicated control panel inputs

2 or 8 Way Relay Output Card



- 2 or 8 individual programmable outputs
- Fast instant response
- Each output 30V AC/DC, 1 Amp rating
- Cost effective against ancillary hardware

End of Line Modules



Switch End of Line Module

- Provides a simple method of connecting auxiliary contacts to any switch input circuit
- The normal end of line and trigger resistors are not required

Zone Active End-of-Line Module

- Removing a manual call point or detector from its circuit should not affect its ability to respond to an alarm signal
- Removing a detector from a standard base can affect the operation of the entire zone and potentially prevent system discharge unless a diode detector base is used
- Using a diode base prevents the panel from reporting a fault on a zone unless the Zone Active EOL is used
- Zone Active EOL allows the control panel to sense short-term interruptions and report fault conditions
- No EN54-13 compliance is declared for the use of a Zone Active EOL

Sounder Active End-of-Line Module (EN54-13)

- To comply with EN54-13 requirements, the system must check and warn (prior to an alarm condition) if the voltage at the last device cannot be maintained under the applied alarm load conditions
- The sounder circuits can be configured for compliance with EN54-13 by programming and the use of an Active EOL device. All panel sounder outputs must be fitted with the Active EOL device (MXP-505)
- The panel ensures that a fault warning condition is reported if the circuit resistance increases to a condition where the voltage at the last device may fall below its minimum operating voltage level

Product Code	Description
ExGo Extinguishing Control Panel	
EX-3001	Extinguishing Control Panel, 3 Detection Zones + Single Release Output
Key Switches	
EXP-001	Enable Controls (trapped) Key Switch Assembly
EXP-001F	Enable Controls (trapped) Key Switch Assembly. Fitted
EXP-002	Mode Select (Un-trapped) Key Switch Assembly
EXP-002F	Mode Select (Un-trapped) Key Switch Assembly. Fitted
EXP-012	2 position 45° MOM Key Switch
Hold/Abort Switches	
EXP-003-001	Hold Switch, Plastic Enclosure
EXP-003-002	Hold Switch, Stainless Steel Trim Cover Plate
EXP-003-003	Hold Switch, Brass Trim Cover Plate
EXP-003-065	Hold Switch, IP65 Plastic Enclosure
EXP-004-001	Abort Switch, Plastic Enclosure
EXP-004-002	Abort Switch, Stainless Steel Trim Cover Plate
EXP-004-003	Abort Switch, Brass Trim Cover Plate
EXP-004-065	Abort Switch, IP65 Plastic Enclosure
End Of Line Units	
EXP-005	Switch End-of-Line Module (5 off)
EXP-006	Spare Zone Active End-of-Line Module (5 off)
MXP-505	Sounder Active End-of-Line Module (EN54-13)

Product Code	Description
Remote Status Indicators	
EX-3020	RSI c/w LCD + LED Indicators
EX-3021	RSI c/w LCD + LED Indicators with Mode Select Key Switch
EX-3030	RSI c/w LCD + LED Indicators with Manual Release Button
EX-3031	RSI c/w LCD + LED Indicators with MR Button and MS Key Switch
Output Cards	
EXP-007 (F)*	2-Way Relay Output Card (for use with RSI)
EXP-008 (F)*	8-Way Relay Output Card (for use with Ex-3001 only)
* F - Fitted	
Bezels	
EXM-001	Semi-flushing Bezel for Ex-3001 Panel
EXM-002	Semi-flushing Bezel for RSI
Software	
PC-NET-007	Ex-Logo Programming Software
PC-NET-013	Ex-Extraction Software c/w USB Lead
UP-015	USB Lead (2M A-B Type) for Ex-Extraction Software
Spares	
EXS-001	Spare Manual Release Cover
EXS-002	EX-3001 Spare Chassis c/w PCB
EXS-004	Spare Ex-3001 Main PCB
MXS-050	Spare 24V 3A EN54-4 Psu & Battery Charger Card

Fire panel software

Advanced software, DynamixTools, is designed for users. It is easy to operate, easy to understand and makes the complicated simple.

Dynamix Tools comprises a range of specific tools allowing users to achieve what they want, not get bogged down in large, clumsy and complicated software.

Dynamix Tools is being continually developed for the Advanced fire system range, adding new features and performance enhancements. Our position in the global fire industry means we help guide legislation and can implement software changes quickly, keeping our customer systems right up to date. We also listen closely to our customers and often produce features for specific client requirements.

ExGo Extraction software allows the full download of gas system configuration and event log data. The user friendly software provides a quick reporting log book, showing full system configuration, full event logs and a quick reporting guide to customise system reports for end users.

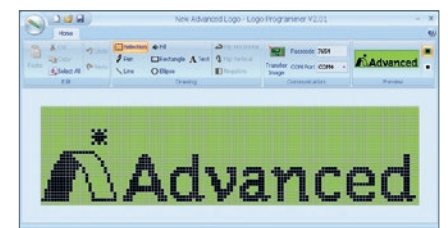
ExGo Extraction Software

- USB connection
- User friendly Windows based software
- Export information to Office applications
- Download event logs and system configuration
- Customised printouts

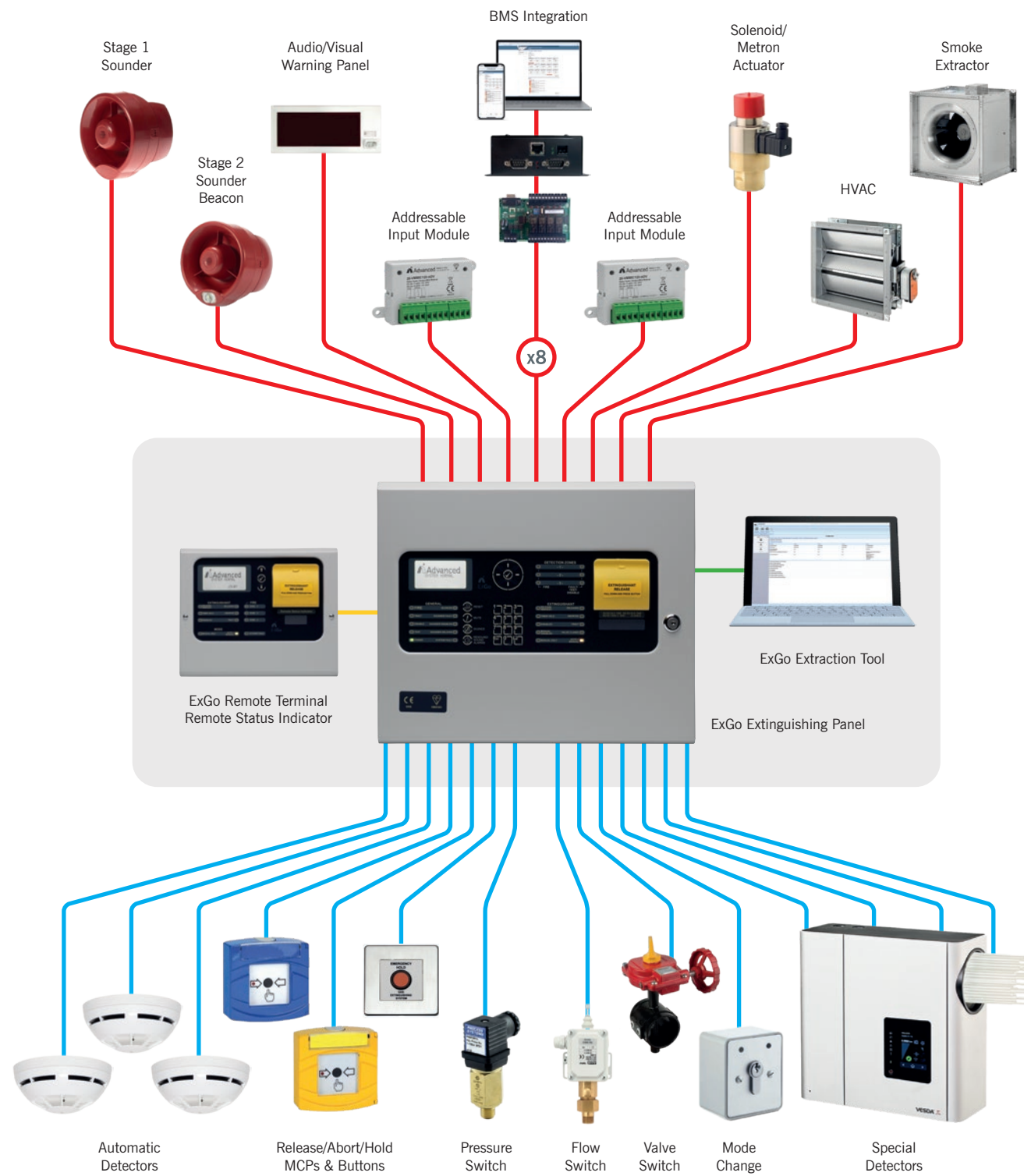


Logo Tool

- Allows the installers logo to be displayed on the panels graphical LCD display during Normal Operation
- Uploads standard bitmap images
- Tool allows creation of logos
- JPG and GIF images can be imported



Sample System Diagram



For guidance only.

Custom-built panels

Advanced fire panels can be designed and manufactured to your specifications.

When you're facing a complex fire protection challenge, our AdSpecials team will work with you to design and manufacture customised fire panels, control interfaces and enclosures to meet the needs of your site.

The scope of customisation ranges from simple colour coordination to fully bespoke panel housings that offer environmental protection and specialist control and indication.



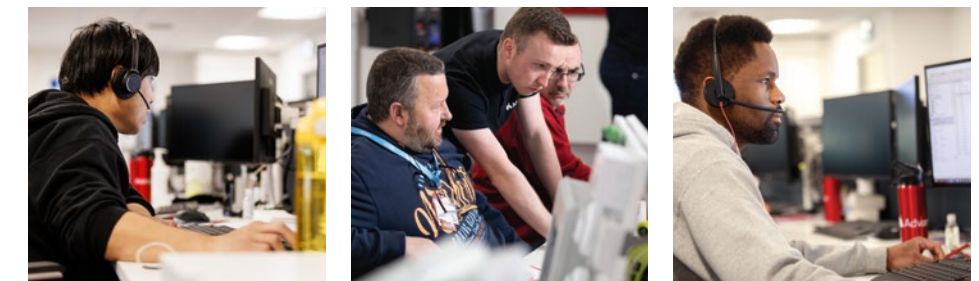
Contact us now to discuss your requirements

Technical support

Highly-rated support. Available by telephone and online.

As an Advanced customer, you have access to a host of helpful advice and support.

This includes a wealth of online information, from 'how to' videos to datasheets and detailed product manuals. Simply complete one of our online forms and you'll be able to access a range of additional services, previously available to those with an Advanced360 account.



Services include:

- **Technical support** – available by telephone and online by raising a support ticket, which one of our experienced technical support engineers will answer.
- **Software** – download software and save your software packages by installation/site.
- **Literature** – download manuals, specifications, approved partner certificates, technical information and more.
- **Warranty** – download our warranty statement.
- **Training** – direct customers can book training online and will be sent training certificates by email. If you need to access a previous training certificate, simply complete an online request form. All non-direct customers should book training through their distributor.

advancedco.com/training-support



Email: enquiries@advancedco.com
Web: www.advancedco.com



ExGo and all other Advanced product brands are trademarks of Advanced Electronics Ltd. All rights reserved.



A **Halma** company