



The next-generation

Mx^{*}Pro⁵

More power. More versatility.
Maximum peace of mind.



*UK and
Ireland only*



Open-protocol freedom. Maximum versatility.

When it comes to what's needed for each site, we believe our panels' specifiers and installers know best.

That's why our next-generation MxPro 5 is more flexible than ever.

Compatible with the leading wired and wireless protocols, now including Core, our multiprotocol approach puts Advanced customers in complete control.

Creating a safer future



Discover our next-gen MxPro 5

Contents

About Advanced	4
Introducing the Next-Generation MxPro 5	6
New Basecard	8
MxPro 5 Features	10
MxPro 5 System Diagram	14
MxPro 5 Panels	16
Complete False Alarm Management	17
Fire Panel Software	18
AdvancedLive	22
Sustainability	24
Networking	25
MxPro 5 Parts List	26
Technical Support	30
CPDs and Training	31



Advanced – Made in the UK. Trusted around the world

At Advanced, we're committed to creating a safer future. We deliver fire protection and life safety solutions that protect people and property in more than 80 countries across the globe.

Our products are shaped by decades of research and development expertise as well as ongoing investment in new technologies. This ensures they provide years of high performance and reliability – for ultimate peace of mind.

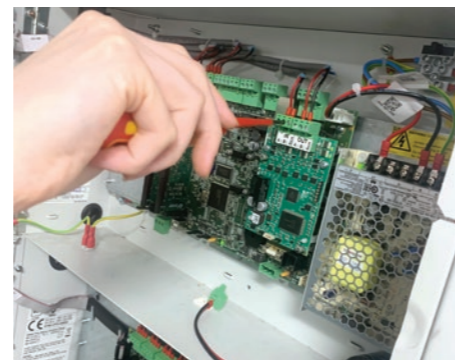
Everything we deliver is rigorously tested and approved to exacting quality standards – which is why Advanced products are trusted by customers the world over and synonymous with quality, performance and ease of use.



Advanced Headquarters, Newcastle, UK

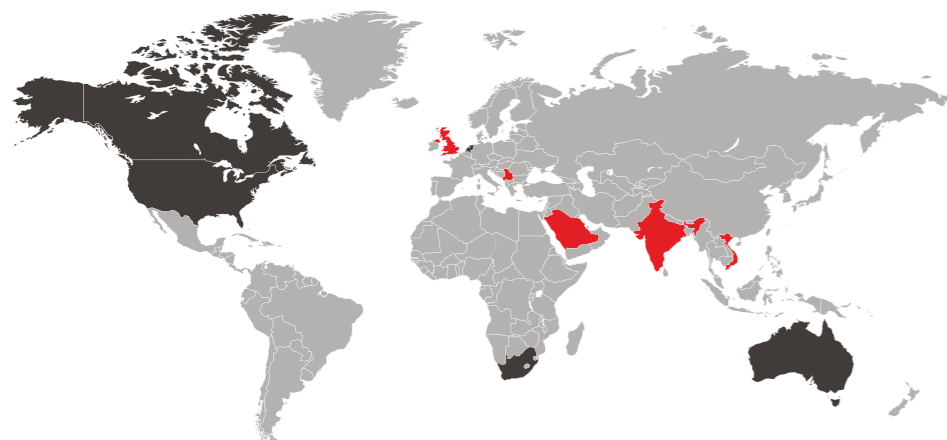
We understand that few fire protection challenges are the same, so as well as our mass-customised ranges, we also offer fully-customised solutions. This flexibility gives you complete control over the functions, format and finish of products to suit your site's unique specification.

We are dedicated to providing excellent service and have an international network of offices and agents to help you access sales support with ease – wherever you are in the world.



In addition, our training and technical services are free of charge to all our direct customers and consistently rated as excellent.

For added reassurance, Advanced is part of the safety sector of FTSE 100 company Halma plc. This global group of life-saving technology companies has a clear purpose to grow a safer, cleaner, healthier future for everyone, every day.



- Advanced & Halma sales representatives
- Strategic and OEM partners
- Distributors and system integrators in key locations worldwide



Durham Cathedral, Durham, UK



HMS Belfast, London, UK

MxPro⁵ protects...



London Underground, London, UK



22 Bishopsgate, London, UK



University of Edinburgh, Scotland, UK



King's Cross Western Concourse, London, UK

Introducing the next-generation MxPro⁵

For over a decade, the MxPro 5 has been reliably delivering fire safety peace of mind in buildings across the world.

And while the panels' looks and dependability haven't altered, the technology and software driving them have been constantly evolving – keeping them – and you – one step ahead in a fast-changing fire industry.

And now, we're taking another step forward by bringing you our most important improvements yet...

This is the open-protocol MxPro 5 you know and trust but with a host of new features including easy Cloud connectivity, our simplest ever programming and our fastest processing power to date. And this next-generation MxPro 5 is even more sustainable too...

Here, you can discover all the benefits of our latest panels and why choosing Advanced puts you at the forefront of fire safety...



MxPro 5 fire panels have been certified by FM Approvals, enabling them to carry the FM APPROVED diamond, one of the most prestigious certification marks in the world.

Our most versatile panel

The upgraded MxPro 5 brings you easy connection to AdvancedLive smart monitoring and management, a sustainable upgrade option for existing systems and a host of other new benefits.



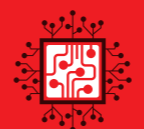
Easier AdvancedLive connectivity

Smart, real-time monitoring and control of your Advanced fire system anytime, anywhere on any device.



Improved power supply unit

Easier replacement, improved support for third-party equipment and longer battery life.



Upgraded processor and memory

Faster performance of power-up, configuration download, system monitoring and notifications.



Quicker, more intuitive programming

Our new-style ConfigTool provides a much-improved user experience, easier navigation, support for more complex cause and effect programming, a design checker, and over 10 times quicker transfer of configuration settings (typically under 30 seconds).



New loop-driver card

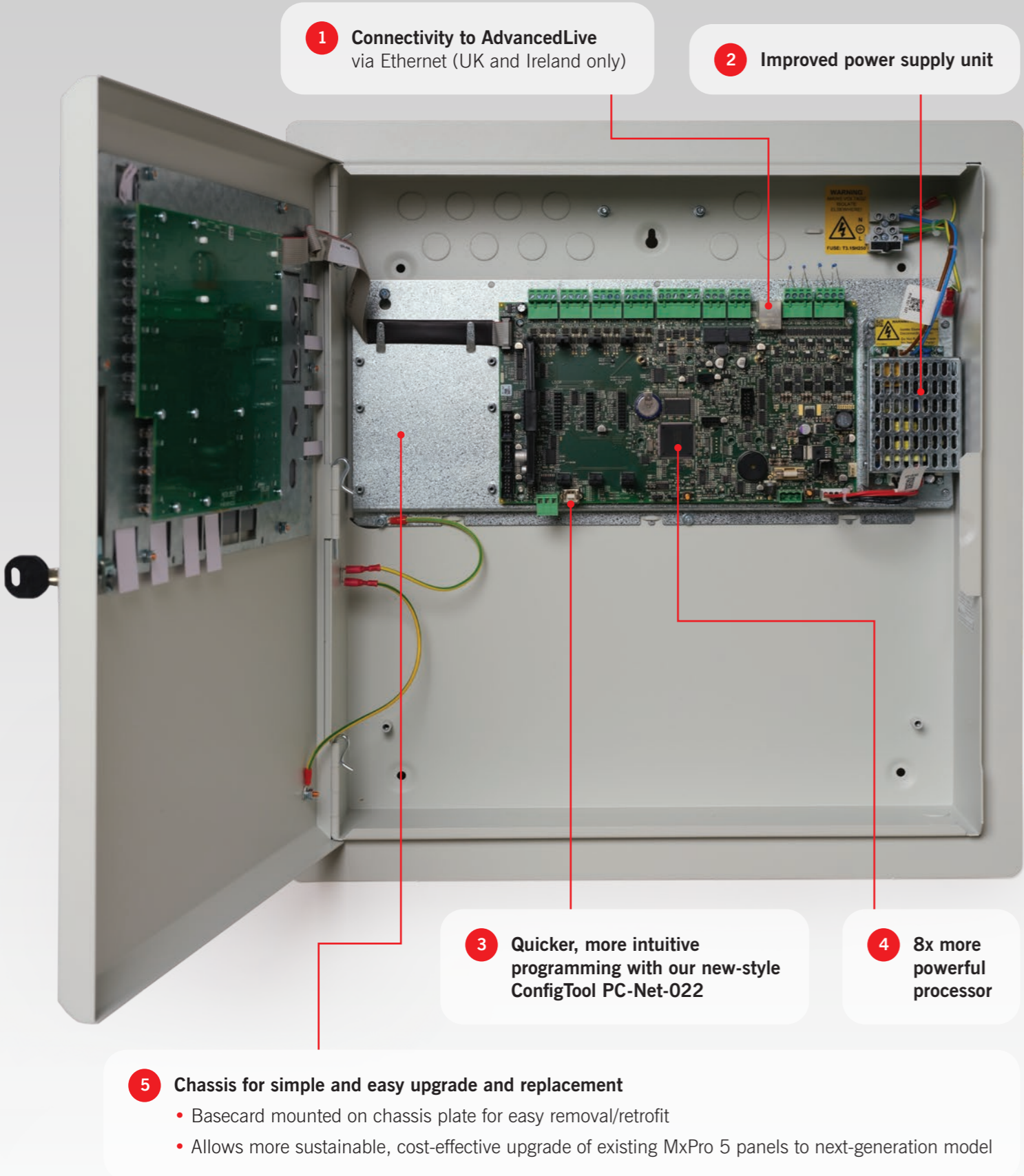
Our MXP-568 loop driver card enables a wider range of features and support for all protocols and the latest devices. These include the Apollo Core protocol-compatible Soteria range.



Increased configuration options

Support for more complex cause and effect programming with increased point configuration and enhanced logic, using the latest Windows technology.

New basecard, new advantages



1 Connectivity to AdvancedLive via Ethernet (UK and Ireland only)

2 Improved power supply unit

3 Quicker, more intuitive programming with our new-style ConfigTool PC-Net-022

4 8x more powerful processor

5 Chassis for simple and easy upgrade and replacement

- Basecard mounted on chassis plate for easy removal/retrofit
- Allows more sustainable, cost-effective upgrade of existing MxPro 5 panels to next-generation model

The updated basecards for our 1-loop, 2-loop, 4-loop and 8-loop MxPro 5 panels provide a host of new benefits, including easier AdvancedLive connectivity, faster commissioning, a more efficient battery performance and a smoother user experience overall.

Basecard comparison:

Topic title	Previous 'Gen 1' basecard	New 'Gen 2' basecard
1 AdvancedLive: (UK & Ireland only)	No direct connection to AdvancedLive. Additional hardware required.	Ethernet connection to AdvancedLive for easy access to smart fire system monitoring (UK & Ireland only)
2 Power supply unit:	Integrated into basecard	Upgraded and separate from basecard for easier replacement and integration with third-party equipment
Menu navigation:	Limited menu navigation responsiveness	Improvements to menu navigation support quick and easy installation and commissioning
3 Configuration software:	Not forward compatible with next-generation basecard. Uses PC-Net-003 configuration software	Uses PC-Net-022 which has an improved user interface and navigation, including improved cause and effect and backwards compatibility
Download time:	Panel/PC average download time of 4 minutes	Connection to PC is much faster – less than 30 seconds
4 Memory:	Memory size limited to 512KB x 8	Enhanced memory size 1MB x 8 (4 x greater memory capacity) provides improved capabilities and functionality and supports larger fire systems
Number of points:	1000	2000
Input events:	250	2000
Logic terms:	1500 Apollo/Hochiki 500 Argus and Nittan	2000
Logic statements:	100	250
Logic lines:	1500 Apollo/Hochiki 500 Argus and Nittan	3000
Output group lines:	1150	2000
5 Chassis for simple and easy upgrade and replacement:	Basecard mounted on chassis plate for easy removal/retrofit	Easy replacement of the basecard allows more sustainable, cost-effective upgrade of existing MxPro 5 panels to next-generation model

MxPro⁵ More power. More versatility. Maximum peace of mind.

The next-generation MxPro 5 combines valuable new features with the familiar benefits that have made this panel so versatile and popular..

Our open protocol flexibility:

- Gives you the freedom to match the best-performing panel with the most appropriate detector range for the site
- Means no tie-ins to expensive maintenance contracts and restrictive agreements
- Includes intuitive programming, powerful networking, comprehensive cause and effect, false alarm reduction and unique diagnostic features that put you in complete control of your fire protection for total fire safety peace of mind.

Our proven fire protection:

- Is fully approved to EN54 Parts 2 and 4
- Is suitable for use across a wide range of locations – whether networked to protect hospital complexes and large public transport systems, used in combination with building management systems in high-rise commercial developments or chosen to safeguard historical artefacts in historic settings
- Offers a reliable, scalable solution, backed up by lifetime technical support.



Easy to install and use

MxPro 5 panels are EN54-approved and simple to install, configure and use.

- Easy-fix removable chassis and in-built software make MxPro 5 fire panels simple to set up
- Powerful networking, extensive configuration options and comprehensive cause and effect put you in complete control
- Intuitive menus, with simple click-and-select programming, for simple, easy commissioning
- Support for intelligent remote terminals, I/O drivers and BMS interfaces make light work of connecting with building management systems
- Help, advice, tips and training are all on hand from our experienced technical support team. We also have an extensive collection of 'how to' videos on our YouTube channel.



Scalable and versatile

We know that sites can expand, and fire protection requirements change and evolve over time. That's why we've designed MxPro 5 to be scalable and versatile, able to adapt as required with minimal fuss or disruption.

- Standalone one, two, four or eight loop formats let you choose the panel size that meets your requirements and budget
- A choice of remote display terminals includes TouchControl – our 10-inch touchscreen with interactive maps and zone plans ideal for public reception areas
- Up to 254 devices per loop (depending on chosen protocol) and an overall capacity of over 200,000 devices per network
- Every panel is networkable with up to 200 network nodes and 2,000 fire detection zones
- Panels can support wired and wireless loops, or a hybrid of both (depending on chosen protocol)
- Compatibility with a choice of leading detector partners – Apollo, Argus, Hochiki and Nittan to suit your exact needs.



Packed with premium features

Every MxPro 5 panel comes with a host of advanced features built in as standard, giving you peace of mind that you won't need to buy expensive add-ons in the future.

- Unique diagnostic features include 'scope on board' to provide panel readings from any loop, making it easy to identify and investigate issues
- Network diagnostic tool helps prevent fires and faults from being transmitted across the network
- Built-in multimeter measures all voltages and currents across the system, so you can speed up the commissioning process by identifying voltage/current levels in real time
- Every panel includes AlarmCalm false alarm management software to help you minimise unwanted alarms, with 200 programmable false alarm management 'building areas' per panel
- Ability to monitor the circuit from any panel or remote terminal and see a complete device history on every panel
- Standard peripherals include direct USB and RS232 PC connections, and peripheral expansion is built in for added peace of mind
- 20 built-in, fully programmable LEDs as standard without the need to buy a separate LED zone card
- On-board or optional remote battery temperature sensor ensures optimum operational efficiency and life
- 4 programmable push buttons on the front of the panel for user customisation according to the fire system's needs
- 5,000 event and diagnostic, and 500 fire event log entries, for comprehensive tracking and auditing
- Timed enablement of disabled zones, input and output devices, to program and manage fire system response and reporting
- Modular in construction, with mass customisation options including the ability to program your own company logo to appear on the fire panel screen.



Powerful, flexible service reporting

Every MxPro 5 panel includes an inbuilt, easy-to-use, Windows-based service tool which saves you time and money by providing easy, instant access to historic and real-time device data, and shows proof of servicing at a glance.

- Download service reports, inspect the device history and keep track of service schedules for safety audit compliance
- Customisable data filters make it easy to focus on potential trouble spots and ensure they're checked and tested during servicing
- Predict which devices are becoming contaminated so you can clean/replace them before they cause a false alarm
- Customise reports to show the data you need and export it as PDF, Excel or HTML files to prove compliance simply and efficiently.

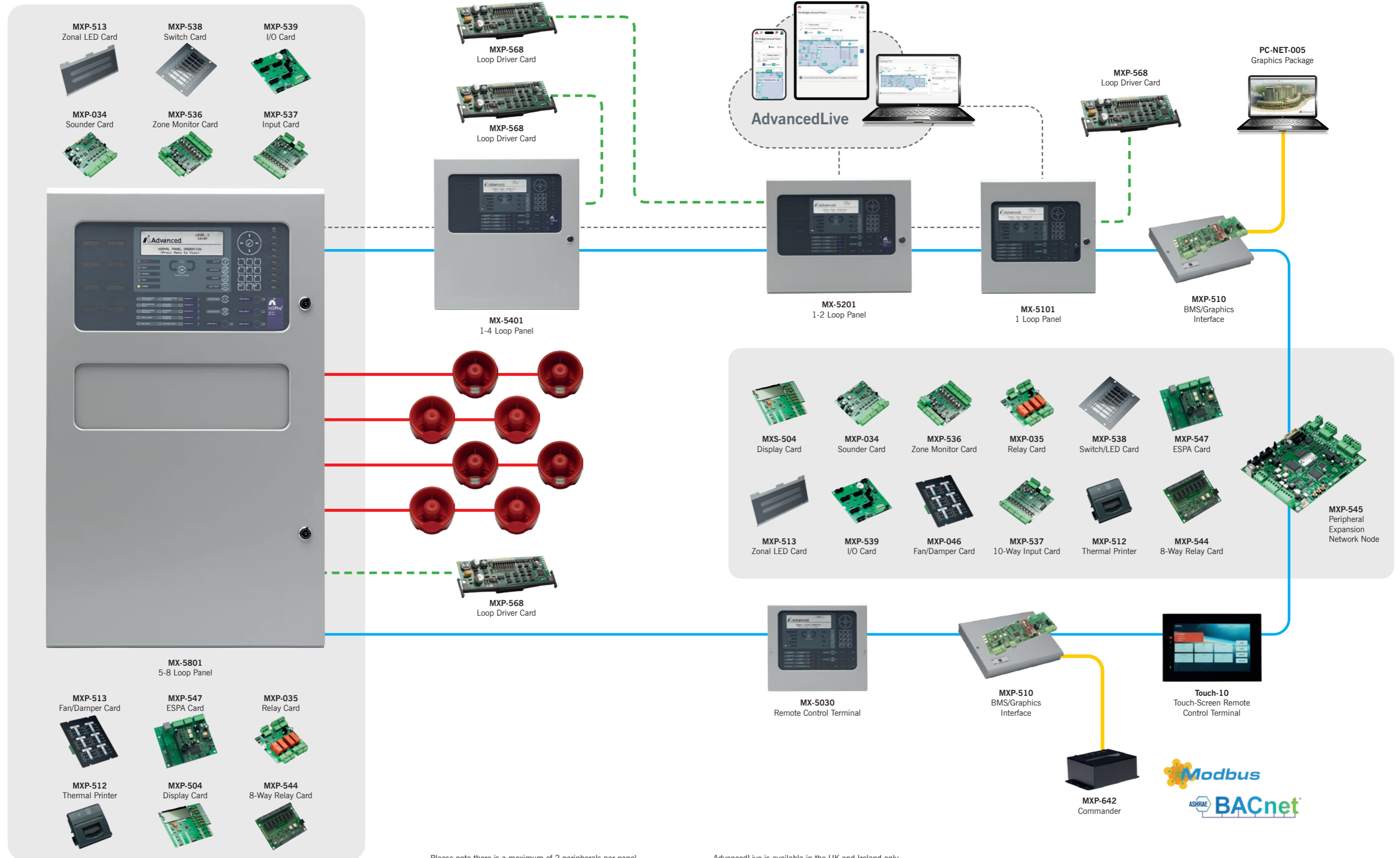


MxPro⁵ Features

Hardware Features	
Display backlight	White backlit display Improved efficiency with programmable dimming options Software-driven contrast adjustment via menu
PC connections	USB and RS232 – independently operated
Peripheral expansion bus	Built in as standard on all panels Extended range of P-Bus option cards
Wiring fault monitoring	EN54-2: Open circuit, short circuit EN54-13: Continuous checking for increases in resistance, (loose terminations), partial shorts etc.
Control keys	Mute, Silence, Reset, LED Test, Resound, Evacuate and dedicated More Alarms buttons on control panels and large repeater Configurable keypad repeat keys
Front panel push buttons	4 programmable function buttons on control panels and large repeater
Battery charging	Charger current (up to 2 amps), voltage and temperature available from any display on a network Built-in or remote battery temperature sensor
Zone LEDs	20 integral red LED indicators included as standard on control panels and large repeater Can be assigned to any fire zone or programmable for other uses Up to 200 additional LEDs with Large, Deep and Extended enclosures. (Up to 50 in Medium enclosure) Options include red, yellow and (bi-colour) red/yellow or green/yellow column format with slide-in labels
Programmable input	Dedicated monitored switch input as standard on all panels
Programmable key switch inputs	Built-in as standard on all panels
Printer	Optional on-board printer. No additional battery pack required. Integral paper feed button. Printer fault conditions displayed on panel, prints customer logo
Power	Aux supply output @ 500mA 24V
Standards	Approved to EN54 Parts 2 and 4
Software Features	
Dedicated output connection (via Ethernet port) for AdvancedLive*	Removes the need for additional BIMS connections/hardware Easy to set up and simplifies managing and monitoring your fire system, no matter where you are
Independent general event and fire event logs	Yes – on all panels and repeaters Any panel can be configured as a network-wide main event log
Event log entries	5,000 + 500 fire Additional logging for investigation delays and any enable/disable actions
Timed disable options	Permanent or automatic timed re-enablement of any input or output device
Enable/disable inputs by zone	<ul style="list-style-type: none"> All inputs Selected inputs Only automatic inputs Only manual inputs All other inputs
Enable/disable outputs	Disable by output purpose Configurable disable outputs menu options include: sounders, relays, beacons, fire routing, fault routing, fire protection, pager, all or selected Disablement of outputs across network configurable by sector mask
Real-time clock	Yes - no lithium battery required
Languages	Supports multiple different character sets (code pages) and languages

Network Features	
Max devices per network	200,000
Max nodes on network	200
Sectors	200
Maximum fire zones displayed	2,000 on all panels
Programming Features	
Independent building areas for false alarm management	201 areas per panel Local or global alarm acknowledgement facility
Zone LEDs	All LEDs fully programmable PC configuration presented graphically Primary/secondary activation
Buzzer options	Smart latch of faults Fault notification can resound daily Service option to inhibit by time clock
Programmable input actions	22 – including new supervisory, fire routing and fire protection confirmed + alarm acknowledgement actions
Output purpose	Output purpose configurable
Output ringing styles	40 – output activation priority configurable
Zone qualifiers	24 categories of zone qualifiers
Logic statements	3,000 logic lines – programmable options: <ul style="list-style-type: none"> Inputs Any 2 inputs Zone qualifiers Any 2 zones General events Time clocks
General events	36 categories
Blocking rules	Programmable blocking rules – by general event or output groups
Service and Diagnostic Features	
Device history	For every device the time and date of the: <ul style="list-style-type: none"> Last activation Last test Last disable Last enable Date created
On-board digital storage scope	Yes
View panel voltages and currents	Available from any MxPro 5 repeater or panel on the network
View panel status	View status of all panel circuits across network Firmware version of all internal hardware and peripheral devices can be viewed at the panel
Firmware updates	All hardware flash upgradable via panel USB or serial port
Detector status information	New warning state allows any devices nearing drift contamination limits to be identified during routine servicing before a fault level is reached
Service tool	Download device information Extract event log information Download device history View drift (contaminated) status of detectors Network simulation and test facility

MxPro⁵ System diagram



Please note there is a maximum of 2 peripherals per panel.

AdvancedLive is available in the UK and Ireland only.



MxPro⁵ Options

1 Loop



- Single loop
- Small enclosure
- Maximum 7Ah internal batteries
- 20 programmable LEDs
- Optional programmable key switch
- Programmable input
- Medium, large and deep enclosure options
- AdvancedLive ready

1-2 Loop



- Order an extra loop driver card for a 2-loop panel
- Medium enclosure
- Maximum 12Ah internal batteries
- Up to 50 additional programmable LEDs
- Up to 8 programmable key switches or 4 plus printer
- Plexi-glass door option
- Large and deep enclosure options
- AdvancedLive ready

1-4 Loop



- Order an extra loop driver card for a 2-loop panel, 2 cards for a 3-loop panel and 3 for a 4-loop panel
- Large enclosure
- Maximum 17Ah internal batteries
- Up to 200 additional programmable LEDs
- Up to 8 programmable key switches or 4 plus printer
- Plexi-glass door option
- Deep and extended enclosure options
- AdvancedLive ready

2-8 Loop



- Order an extra loop driver card for a 2-loop panel, 2 for a 3-loop panel, 3 for a 4-loop panel etc
- Extended enclosure
- Maximum 45Ah internal batteries
- Up to 200 additional programmable LEDs, 2 x switch cards or mimic
- Up to 8 programmable key switches or 4 plus printer
- Plexi-glass door and external battery box option
- AdvancedLive ready

Integrated Peripheral Bus

- Integrated P-Bus as standard on all MxPro 5 panels
- Up to 32 expansion cards can be added to an MxPro 5 panel
- Peripheral expansion option cards include:
 - 4-way relay card
 - 4-way sounder card
 - 10-way monitored input card
 - 10-way relay card
 - Conventional zone card (8 class B or 4 class A zones + 3 programmable relays)
 - 16-way push button/48 LED card
 - 16-way input/48 output (direct drive LED outputs)
 - Fire and fault routing/protection card
 - Redundant controller

Rack Mount

- Rack-mountable control panels
- Additional 16U and 20U high IP55 enclosures
- Rack-mount peripheral chassis plate, LED and switch-card module options
- Dedicated mimic door option

Remote Terminals

- Four types available:
 - TouchControl 10" touchscreen with active maps and zone plans, plus a customisable home screen for your logo or promotional presentations
 - Remote display terminal
 - Remote control terminal with additional mute, silence, reset and resound keys
 - Remote control terminal with additional LED status indication, four programmable push buttons, mute, silence, reset, resound, lamp test and evacuate keys
- Optional level 2 access enable key switch (not TouchControl)
- Integrated standard or fault-tolerant network interface with screen termination point
- Programmable display for up to 2,000 zones along with sector-based controls



Find out more about TouchControl



AlarmCalm Complete False Alarm Management.

MxPro 5 features the power and flexibility of our in-built AlarmCalm false alarm management and reduction software.

This is unique in the UK in offering a solution to false alarms that meets the requirements of BS EN54-2.

Clauses 7.11 & 7.12 in that standard are often referred to as dependencies, verification delays, investigation delays or delays to outputs.

AlarmCalm uses fast hardware, powerful software and optional, intelligent loop devices to build a total solution to false alarms that's versatile and easy to configure. You can design a solution around the needs of your specific site and this can radically reduce the disruption, inconvenience and costs associated with unwanted alarms.

Optional verification button



This is an intelligent verification device that can be installed on the loop and works with the AlarmCalm software to allow occupants to acknowledge a fire alarm signal locally, if they believe it has been triggered accidentally.

AlarmCalm features:

- **Versatile cause and effect**
In-depth control over alarm verification and investigation delays to outputs.
- **Customised management for any site**
Divide your building(s) into 'building areas', each with quick-to-apply unique or group false alarm management settings. 50 building areas per panel.
- **Unlimited points**
No restriction on the number of points in a building area and configurable by point.
- **Global acknowledgement**
Panel inputs can be programmed to manage verification and output delays.
- **Flexible verification**
Options include: set verification by building area, day/night, on/off, change verification times, verification by second device or device mode change.
- **Full event log**
All verification and output delays recorded in panel event logs.
- **Multiple verification inputs and outputs**
Inputs can include optical, heat and multisensors, callpoints and AlarmCalm button or other input modules. Outputs can be sounders, beacons and relays etc. Sounder ring styles can be configured.
- **Failsafe operation**
Total control over verification times. Users can only extend verification once. Set maximum number of areas in verification before full fire is signalled.
- **Easy management of outputs**
Output delays are handled in exactly the same way as verifications, making setup very simple.

AlarmCalm is not compatible with Apollo Core protocol.



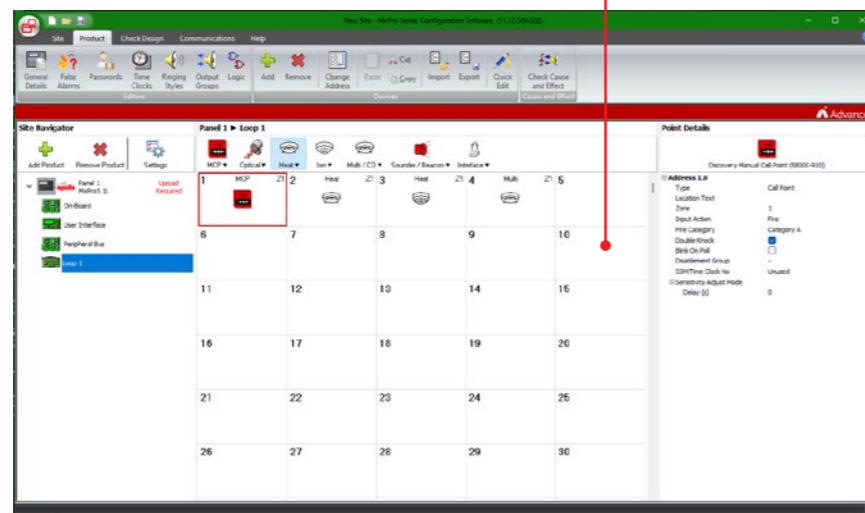
Scan the QR code to find out more about AlarmCalm

Our most intuitive configuration software yet

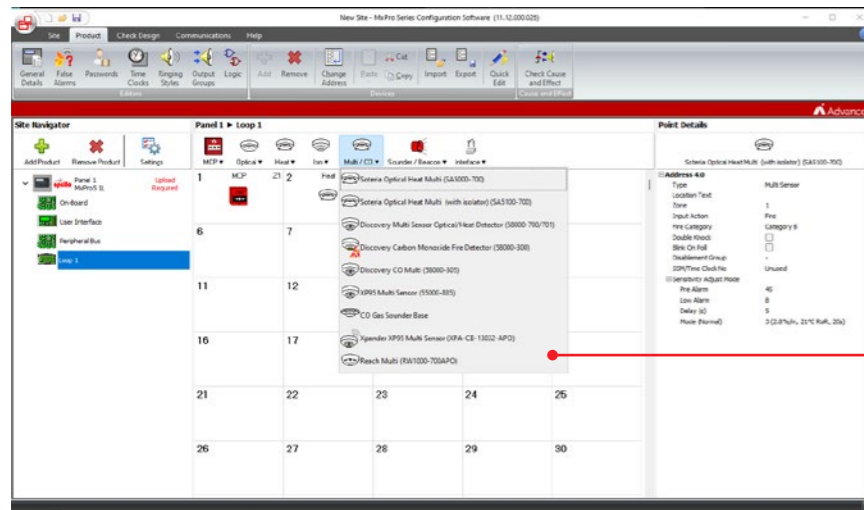
The next-generation MxPro 5 uses our latest ConfigTool, (PC-Net-022) – for faster, more flexible, fuss-free setup.

Improved user interface

- We've updated the user interface with speed and efficiency in mind. You can access most operations from the program menu, aided by a toolbar with descriptions of each function and easy-to-follow icons.
- We've also optimised the use of the available screen space to ensure more information is visible. You can see all the devices fitted by address in a grid layout. Simply by selecting an address, you can configure all device inputs and outputs from the same screen.
- Plus, it's so much faster, with no delays even when setting up the largest of site designs.



1 Loop grid with right-hand panel for settings/selections by device

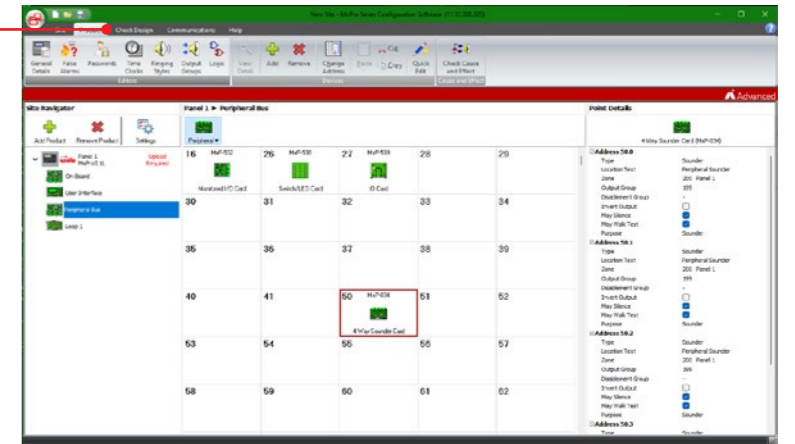


2 Drop-down menu lists make device selection easy

Design checker

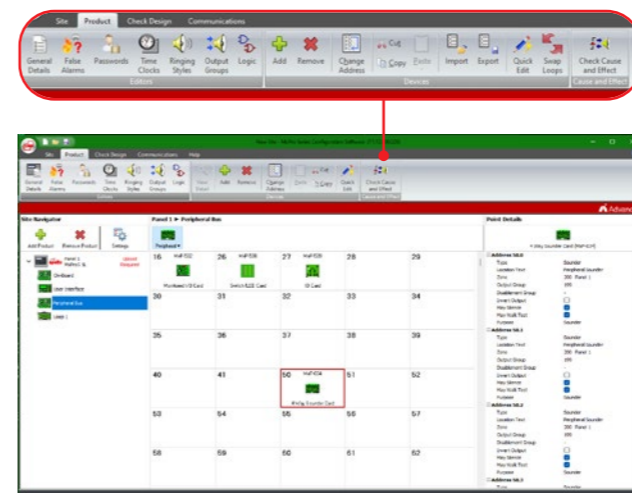
3 Enhanced menu navigation

- You can run an in-depth analysis of over 80 checks to safeguard against common site design issues. By flagging potential problems early, you can avoid uploading flawed designs, and save fault-finding time.



Cause and effect checking

- A sophisticated cause and effect design checker has been incorporated to allow a site design to be verified as it is constructed. It's possible to prove a design and correct any mistakes without actually having to go to site.



Fast communication

- Communication speed is greatly improved. Transfer of the configuration settings to/from the panel is more than 10 times faster than previously – typically taking just 30 seconds instead of 6 to 8 minutes.
- Super-fast file loading and saving saves you time and money, even when working with large, complex site designs.
- You can now import from another design and choose from more settings than ever before. Plus, to ensure seamless working between existing and new MxPro 5 installations, you can import files from PC-Net-003.

Versatile software

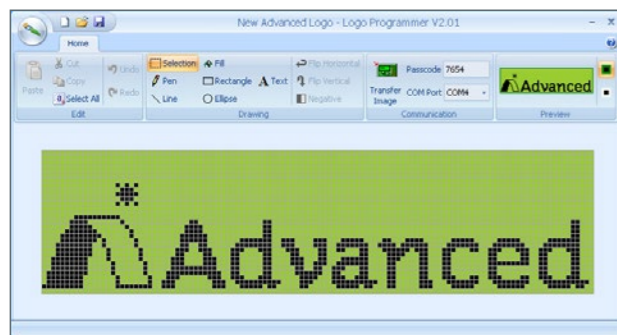
In addition to the ConfigTool, you have access to a range of other software designed to make the setup and use of MxPro 5 panels fast, efficient and flexible.

We are continually developing our software for the MxPro 5 panel range, adding new features and performance enhancements.

Our position in the global fire industry means we help guide legislation and can implement software changes quickly, keeping our systems right up to date. We also listen closely to our customers and often produce features for specific client requirements.

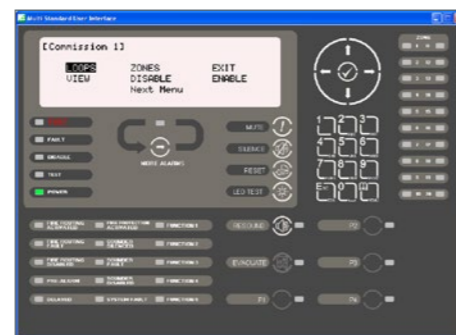
LogoTool

- Allows the installer's logo to be displayed on the panel's graphical LCD display during normal operation
- Uploads standard bitmap images
- Tool allows creation of logos
- JPG and GIF images can be imported



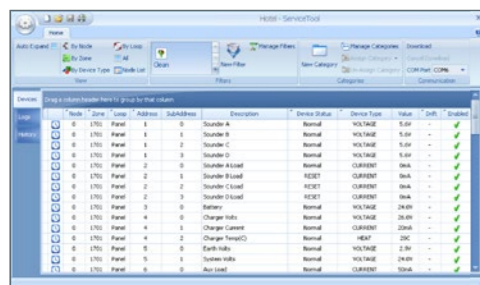
TerminalTool

- Now part of PC-Net-022
- Virtual panel display supports remote interrogation
- Direct USB/RS232 or remote modem/IP connection
- Real-time status information and control
- TerminalTool (PC-Net-004) is no longer available



ServiceTool

- Extract device information and event logs from single or multiple panels
- Device history including last activation, test, enable, disable and date created
- User-defined filters allow data to be grouped and searched in many different ways
- View device status, analogue values and drift (contaminated) information
- Network simulation and test feature
- Categorise events and create user-defined reports



Scan here to find out more about ServiceTool



MapApp

- Used to easily add site maps to TouchControl touchscreen repeater
- Can use any illustration from a photo to a line drawing, isometric or plan
- Simply draw hotspots onto drawing to add fire zones
- Export to microSD card to add to TouchControl RCT



MxPro⁵

Go



Advanced Performance. Wireless Versatility.

Compatible with leading detector protocols

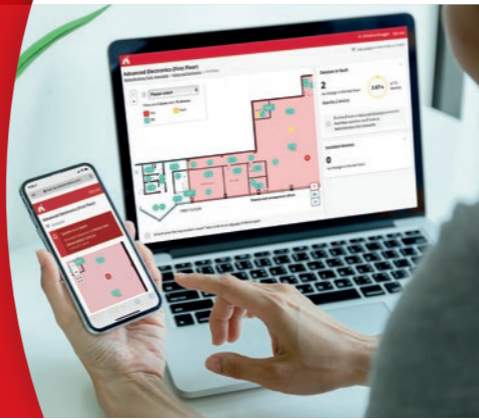
Looking for a flexible range of wireless fire safety solutions you can trust?

Look no further than Advanced.

Whether you need a fast-fit fire system upgrade, wired and wireless hybrid adaptability, or versatile fire panels compatible with the leading wireless protocols, Advanced brings you fire safety peace of mind.

Creating a safer future

*subscription cost applies



Want Advanced fire safety peace of mind?

The next-generation MxPro 5 brings you secure, easy, real-time management, of your fire system – anytime, anywhere, on any internet-enabled device.

Connection is simple using the Ethernet port on the panel.

Once set up, the clear dashboard simplifies day-to-day monitoring, while instant alerts flag fires, faults and fixes – fast.

Book a demo today to discover a new level of fire safety confidence and control with AdvancedLive

Email: enquiries@advancedco.com

Find out more

Scan this QR code to find out more about AdvancedLive including:

- 2-minute overview film
- How AdvancedLive will help you
- Information for IT managers about the security of AdvancedLive
- FAQs



qrco.de/Advlive

Easy connectivity to AdvancedLive monitoring

With the next-generation MxPro 5, it's now easier than ever to access the benefits of AdvancedLive, whether you're creating a new network or upgrading an existing one.

Network of 'Gen2' MxPro 5 panels



✓ Ready to connect to AdvancedLive

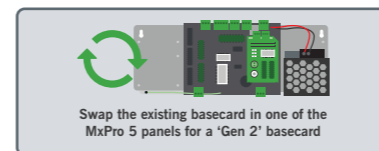
'Gen1' refers to MxPro 5 pre-September 2024.

'Gen2' refers to MxPro 5 post-September 2024.

Existing network of MxPro 5 'Gen1' panels



OR

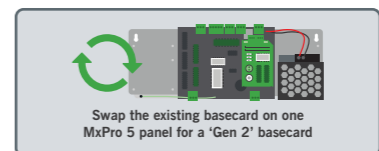


✓ Ready to connect to AdvancedLive

Existing network of MxPro 4 and MxPro 5 'Gen1' panels



OR

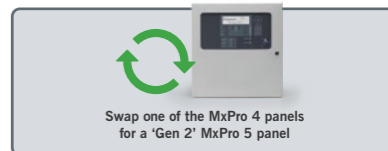


✓ Ready to connect to AdvancedLive

Existing network of MxPro 4 panels



OR



✓ Ready to connect to AdvancedLive

Creating a safer future



We are committed to ‘creating a safer, sustainable future’, both in our own right, and as a member of Halma plc, a FTSE 100 company with a shared purpose to ‘grow a safer, cleaner, healthier future for everyone, every day’.

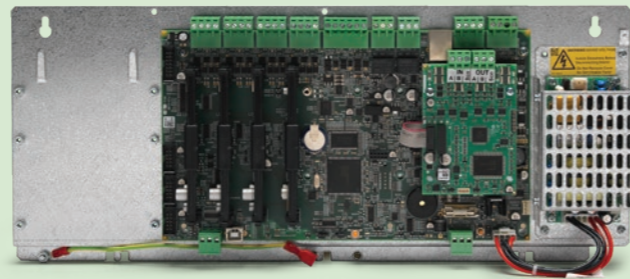


As part of our commitment to sustainability, we are working hard to find ways to reduce our environmental impact. We choose environmentally friendly methods of manufacture wherever possible and actively seek out more sustainable ways of operating across our business.

In upgrading our MxPro 5 range, we have incorporated elements of sustainable design to make it easy for you to benefit from next-generation features on existing Advanced systems – simply by swapping basecards.

How to swap basecards:

Mounted on an easy-fit chassis plate, it is a straightforward process for trained engineers to switch the basecard, avoiding the need to replace entire hardware installations.



Find out more about our sustainability work

Visit our website or scan this QR code



We are an ISO 14001 accredited company, dedicated to reducing our impact on the environment.



Advanced networking

Our high-performance network technology works across the MxPro 5 range, delivering the easiest setup and best-performing fire panel networks available.

Easy connection

- Connect all MxPro 5 control panels, remote terminals and network peripherals together using fire-resistant, two-core cable
- Distribute panels throughout the building for lower wiring costs
- Caters for the smallest two-panel network through to the largest 200 panel, wide-area, networked system
- Simply add and connect a network card to any MxPro 5 control panel or remote terminal

Zoning

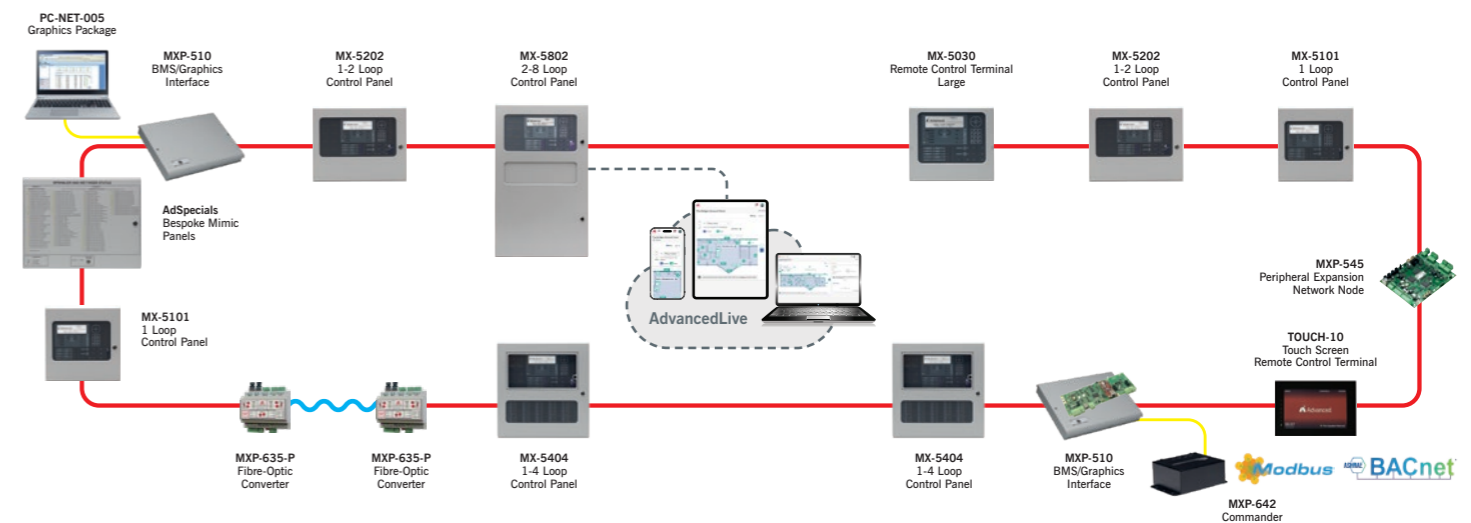
- Networked systems can share up to 2,000 zones
- Autolearning the devices, adding text and assigning zone numbers is easy
- All other nodes on the network are instantly aware of a panel as soon as it is given a valid network node address

Diagnostic and status information

- All panels provide valuable diagnostic and status information and have the facility to prevent the transmission of fires or faults during commissioning
- Intuitive software enables easy configuration of complicated cause and effect for more complex systems
- All configuration data is contained within one user-friendly network configuration file

Peer-to-peer system

- Does not rely on a single ‘master’ panel to function
- Information from any input or output device can be passed over the network and displayed on any MxPro 5 control panel or remote terminal
- Details include fire, general alarm, pre-alarm, fault, control inputs and disablement



Type of network	Standard	Fault tolerant
Typical use	Sites where one panel per building controls evacuation	Sites where more than one panel per building controls evacuation
Setup	Standard network card: MXP-503	Fault-tolerant network card: MXP-509
Maximum cable length	Up to 1.5km	Up to 1.5km between nodes
No. of nodes	32 (50 with signal buffer)	200
No. of zones	2,000	2,000
Typical time to communicate first event	1 second	3.5 seconds

AdvancedLive is available in the UK and Ireland only.

MxPro⁵ Parts list

Product Code	Description
Apollo & Hochiki Protocols	
MX-5101	1-Loop Fire Panel – small enclosure
MX-5101M	1-Loop Fire Panel – medium enclosure
MX-5101L	1-Loop Fire Panel – large enclosure
MX-5101D	1-Loop Fire Panel – deep enclosure
MX-5201	1-2 Loop Fire Panel c/w 1 Loop Card – medium encl.
MX-5201L	1-2 Loop Fire Panel c/w 1 Loop Card – large encl.
MX-5201D	1-2 Loop Fire Panel c/w 1 Loop Card – deep encl.
MX-5401	1-4 Loop Fire Panel c/w 1 Loop Card – large encl.
MX-5401D	1-4 Loop Fire Panel c/w 1 Loop Card – deep encl.
MX-5401E	1-4 Loop Fire Panel c/w 1 Loop Card – extended encl.
MX-5802	2-8 Loop Fire Panel c/w 2 Loop Cards – extended (standard network)
MX-5802/FT	2-8 Loop Fire Panel c/w 2 Loop Cards – extended (fault-tolerant network)
<i>All 2-, 4- and 8-Loop panels are available with up to 2, 4 & 8 Loop Cards fitted</i>	

Apollo Core Protocol	
MX-5101A	1-Loop Fire Panel – small enclosure
MX-5101AM	1-Loop Fire Panel – medium enclosure
MX-5101AL	1-Loop Fire Panel – large enclosure
MX-5101AD	1-Loop Fire Panel – deep enclosure
MX-5201A	1-2 Loop Fire Panel c/w 1 Loop Card – medium encl.
MX-5201AL	1-2 Loop Fire Panel c/w 1 Loop Card – large encl.
MX-5201AD	1-2 Loop Fire Panel c/w 1 Loop Card – deep encl.
MX-5401A	1-4 Loop Fire Panel c/w 1 Loop Card – large encl.
MX-5401AD	1-4 Loop Fire Panel c/w 1 Loop Card – deep encl.
MX-5401AE	1-4 Loop Fire Panel c/w 1 Loop Card – extended encl.
MX-5802A	2-8 Loop Fire Panel c/w 2 Loop Cards – extended (standard network)
MX-5802A/FT	2-8 Loop Fire Panel c/w 2 Loop Cards – extended (fault-tolerant network)
<i>All 2-, 4- and 8-Loop panels are available with up to 2, 4 & 8 Loop Cards fitted</i>	

Argus Protocol	
MX-5101V	1-Loop Fire Panel – small enclosure
MX-5101VM	1-Loop Fire Panel – medium enclosure
MX-5101VL	1-Loop Fire Panel – large enclosure
MX-5101VD	1-Loop Fire Panel – deep enclosure
MX-5201V	1-2 Loop Fire Panel c/w 1 Loop Card – medium encl.
MX-5201VL	1-2 Loop Fire Panel c/w 1 Loop Card – large encl.
MX-5201VD	1-2 Loop Fire Panel c/w 1 Loop Card – deep encl.
MX-5401V	1-4 Loop Fire Panel c/w 1 Loop Card – large encl.
MX-5401VD	1-4 Loop Fire Panel c/w 1 Loop Card – deep encl.
MX-5401VE	1-4 Loop Fire Panel c/w 1 Loop Card – extended encl.
MX-5802V	2-8 Loop Fire Panel c/w 2 Loop Cards – extended (standard network)
MX-5802V/FT	2-8 Loop Fire Panel c/w 2 Loop Cards – extended (fault-tolerant network)
<i>All 2-, 4- and 8-Loop panels are available with up to 2, 4 & 8 Loop Cards fitted</i>	

Product Code	Description
Nittan Protocol	
MX-5101N	1-Loop Fire Panel – small enclosure
MX-5101NM	1-Loop Fire Panel – medium enclosure
MX-5101NL	1-Loop Fire Panel – large enclosure
MX-5101ND	1-Loop Fire Panel – deep enclosure
MX-5201N	1-2 Loop Fire Panel c/w 1 Loop Card – medium encl.
MX-5201NL	1-2 Loop Fire Panel c/w 1 Loop Card – large encl.
MX-5201ND	1-2 Loop Fire Panel c/w 1 Loop Card – deep encl.
MX-5401N	1-4 Loop Fire Panel c/w 1 Loop Card – large encl.
MX-5401ND	1-4 Loop Fire Panel c/w 1 Loop Card – deep encl.
MX-5401NE	1-4 Loop Fire Panel c/w 1 Loop Card – extended encl.
MX-5802N	2-8 Loop Fire Panel c/w 2 Loop Cards – extended (standard network)
MX-5802N/FT	2-8 Loop Fire Panel c/w 2 Loop Cards – extended (fault-tolerant network)
<i>All 2-, 4- and 8-Loop panels are available with up to 2, 4 & 8 Loop Cards fitted</i>	

Loop Driver Cards	
MXP-568	Loop Driver Card – Apollo (incl Core protocol), Hochiki, Argus
MXP-567	Loop Driver Card – Nittan

Remote Terminals	
MX-5010	Remote Display Terminal (RDT)
MX-5020	Remote Control Terminal (RCT) – small
MX-5030	Remote Control Terminal (RCT) – large
MX-5010/FT	Remote Display Terminal (RDT) – fault tolerant
MX-5020/FT	Remote Control Terminal (RCT) – small (fault tolerant)
MX-5030/FT	Remote Control Terminal (RCT) – large (fault tolerant)

TouchControl	
TOUCH-10	Touch-Screen Terminal – standard network
TOUCH-10/FT	Touch-Screen Terminal – fault-tolerant network
TOUCH-10-SBB	Touch-Screen Terminal Surface Back Box

Network Cards	
MXP-503*	Network Card – standard network
MXP-509*	Network Card – fault-tolerant network
MXS-028	Spare Fault-tolerant Network Interface
MXP-030	Standard Network Booster/Isolator – DIN-rail module
MXP-542	24VDC – 24VCD Converter/Isolator
MXP-635-A	Fibre Optic Converter – active
MXP-635-P	Fibre Optic Converter – passive
MXP-635-MM	Fibre Optic Converter Multi-Mode
MXP-635-SM	Fibre Optic Converter Single-Mode
MXP-635-BD/AB	Fibre Optic SFP Module – bi-directional (up)
MXP-635-BD/BA	Fibre Optic SFP Module – bi-directional (down)
MXP-635/IVIEW	Fibre Optic iView Commissioning Tool (limited)
MXP-635/COMM	Fibre Optic iView Commissioning Tool (interactive)
<i>* Add F for fitted</i>	

Product Code	Description
Peripherals & P-Bus Expansion Cards	
MXP-034*	4-Way Sounder Card
MXP-035*	4-Way Relay Card
MXP-035-BXP	4-Way Relay Card with 1.5A PSU – boxed
MXP-506	Routing Termination Card
MXP-532*	Routing/Protection Interface
MXP-536*	8-Way Conventional Zone Monitor Card
MXP-537*	10-Way Monitored Input Card
MXP-538	Switch/LED Module – 16 switches, 3 programmable LEDs/switches (red, yellow, green)
MXP-539	Multi-Way I/O Mimic Driver Card – 16 switch inputs and 48 LED outputs
MXP-544*	8-Way Relay Card
<i>* Add F for fitted</i>	

Other Peripherals	
MXP-501	Remote Battery Temperature Sensor
MXP-505	Sounder (Pt13) Active EOL
MXP-507*	2-Way Relay Card
MXP-512*	Printer Assembly
MXS-509	Spare Paper Roll for MXP-512 Printer
MXP-053	2-Way Stretch/Latch Input Module
<i>* Add F for fitted</i>	

AlarmCalm	
MXP-541A-002	AlarmCalm Button with Buzzer – Apollo (not supported for Core protocol)
MXP-541V-002	AlarmCalm Button with Buzzer – Argus

Key Switches	
MXP-511*	Access Enable Key Switch for 5000
MXP-518-001*	Access Enable Key Switch for 5010/5020
MXP-518-002*	Access Enable Key Switch for 5030
MXP-516*	2-Pos Key Switch – trapped
MXP-517*	2-Pos Key Switch – untrapped
MXP-519*	2-Pos Key Switch – momentary (trapped)
MXP-515*	3-Pos Key Switch – untrapped all positions
MXP-515T*	3-Pos Key Switch – key-free in centre position only
MXS-511-KEY	Spare MXP-511 Access Enable Key
<i>* Add F for fitted</i>	

Network Peripherals	
MXP-545	PENN – standard network
MXP-545/FT	PENN – fault-tolerant network
MXP-046	Damper Interface Module (Apollo protocol)
MXP-046-BX1	Damper Interface Module – boxed (Apollo protocol)
MXP-547*	ESPA Pager Interface
MXP-547-BX	ESPA Pager Interface – boxed
<i>* Add F for fitted</i>	

Product Code	Description
LED Indication	
MXP-513M-050RD*	50 Zone Fire (red)
MXP-513M-050RY*	50 Zone Fire (red) + Fault (yellow)
MXP-513M-050YL*	50 Zone Fault (yellow)
MXP-513L-050RD*	50 Zone Fire (red)
MXP-513L-050RY*	25 Zone Fire (red) + Fault (yellow)
MXP-513L-050YL*	50 Zone Fault (yellow)
MXP-513L-100RD*	100 Zone Fire (red)
MXP-513L-100RY*	50 Zone Fire (red) + Fault (yellow)
MXP-513L-100YL*	100 Zone Fault (yellow)
MXP-513L-200RY*	200 Zone Fire (100 x red) + Fault (100 x yellow)
MXP-513L-050CRY*	50 Zone Column Format – Fire (red) + Fault (yellow)
MXP-513L-050CRYG*	50 Zone Column Format (30 x red/yellow and 20 x green/yellow)
MXP-513-050RD*	50 Zone Fire (red)
MXP-513-050RY*	25 Zone Fire (red) + Fault (yellow)
MXP-513-050YL*	50 Zone Fault (yellow)
MXP-513-100RD*	100 Zone Fire (red)
MXP-513-100RY*	50 Zone Fire (red) + Fault (yellow)
MXP-513-100YL*	100 Zone Fault (yellow)
MXP-513-200RY*	200 Zone Fire (100 x red) + Fault (100 x yellow)
MXP-513-050CRY*	50 Zone Column Format – Fire (red) + Fault (yellow)
MXP-513-050CRYG*	50 Zone Column Format (30 x red/yellow and 20 x green/yellow)
<i>* Add F for fitted</i>	

BMS Interface	
MXP-510-BX	BMS/Graphics Interface – boxed
MXP-510-BX/FT	BMS/Graphics Interface – boxed (fault tolerant)
MXP-510	BMS/Graphics Interface – card only
MXP-510/FT	BMS/Graphics Interface – card only (fault tolerant)
MXP-642	Commander-BACnet/Modbus (IP) Interface (Standard/Basic) – requires BMS-510
MXP-642C	Commander-BACnet/Modbus (IP) Interface (Configured) – requires BMS-510
23-PSU/250	Commander Power Supply – 12VDC 2.5A

Graphics Software	
PC-NET-005-L1	Graphical Control Software – standard (up to 3 panels)
PC-NET-005-L2	Graphical Control Software – standard (up to 15 panels)
PC-NET-005-L2P	Graphical Control Software – premium (up to 15 panels)
PC-NET-005-L3	Graphical Control Software – standard (up to 200 panels)
PC-NET-005-L3P	Graphical Control Software – premium (up to 200 panels)
PC-NET-005-SWM	Smart Watch Module
PC-NET-005-SWM4R	Smart Watch Module (4 inputs)
PC-NET-005-SWM6	Smart Watch Module (4-6 panels)
PC-NET-005-SWM15	Smart Watch Module (7-15 panels)
PC-NET-005-SCU	Smart Cube Unit
PC-NET-005-L1R-L2R	Dongle Upgrade L1R to L2R
PC-NET-005-L2R-L3R	Dongle Upgrade L2R to L3R
PC-NET-005-L2R-L2P	Dongle Upgrade L2R to L2P
PC-NET-005-L2P-L3P	Dongle Upgrade L2P to L3P
PC-NET-005-L3R-L3P	Dongle Upgrade L3R to L3P

MxPro⁵ Parts list

Product Code	Description
Cables	
UP-001	FS232 9-Way to 3-Way Plug-In Connector – upload/download lead
UP-006	USB Upload/Download Lead for Config Software
UP-015	USB Lead (2M A-B Type)
UP-017	Serial to Ethernet Interface (Moxa)

Power Supplies	
MXP-549	1.5A 24V EN54-4 PSE & Charger – boxed (7Ah battery)
MXP-549-12V	1.5A 12V EN54-4 PSE & Charger – boxed (7Ah battery)
MXP-650	3A 24V EN54-4 PSE & Charger – boxed (17Ah battery)
MXP-650/D	3A 24V EN54-4 PSE & Charger – boxed (38Ah battery)
MXP-651	5A 24V EN54-4 PSE & Charger – boxed (17Ah battery)
MXP-651/D	5A 24V EN54-4 PSE & Charger – boxed (38Ah battery)

Spare (Caged) PSUs	
MXS-049	Spare 1.5A EN54-4 PSU & Battery Charger
MXS-650	Spare 2.5A EN54-4 PSU & Battery Charger
MXS-651	Spare 5.0A EN54-4 PSU & Battery Charger

Panel Kits and Spares	
MXS-011	Spare Panel Door Key
MXS-013	Spare Panel Lock and Key
MXS-505	Spare Glazed Door key
MXS-518	MX-5000 Control Panels Spares Kit
MXS-520	MX-5000 Remote Terminals Spares Kit
MXS-521	MX-5000 Battery Leads
MXS-519	MX-5000R Rack Mount Spares Kit
MXS-522	MX-5000R Battery Leads
MXS-5-FP-S	Spare Fascia Plate and Membrane
MXS-5-FP-ML	Spare Fascia Plate and Membrane

Spare Base Cards	
MXS-501-CP-S	Spare 5100 Basecard w Small Chassis – Apollo/Hochiki
MXS-501-CP-M	Spare 5100 Basecard w Med Chassis – Apollo/Hochiki
MXS-501-PCB	Spare 5100 1 Loop Basecard PCB – no loop cards (programmed)
MXS-501-PSU	Spare 5100 1 Loop Basecard – PSU only
MXS-502-CP	Spare 5200 Basecard w Med Chassis – Apollo/Hochiki
MXS-502-PCB	Spare 5200 1 Loop Basecard PCB – no loop cards (programmed)
MXS-502-PSU	Spare 5200 1 Loop Basecard – PSU only
MXS-503-CP	Spare 5400 Basecard w Lrg Chassis – Apollo/Hochiki
MXS-503-CP-E	Spare 5400 Basecard w Ext Chassis – Apollo/Hochiki
MXS-503-PCB	Spare 5400 1 Loop Basecard PCB – no loop cards (programmed)
MXS-503-PSU	Spare 5400 1 Loop Basecard – PSU only
MXS-504	Spare Display card
MXS-506	Spare MX-5010 Card only
MXS-506/FT	Spare MX-5010 Card only – fault-tolerant network
MXS-507	Spare MX-5020 Card Only
MXS-507/FT	Spare MX-5020 Card Only – fault-tolerant network
MXS-508	Spare MX-5030 Card Only
MXS-508/FT	Spare MX-5030 Card Only – fault-tolerant network

Product Code	Description
Small Enclosure Spares	
MXM-501	Semi-Flushing Bezel
MXM-522-BB	Spare Back Box
MXM-522-D1	Spare Door
MXM-522-CP	Spare Chassis Mtg Plate

Medium Enclosure Spares	
MXM-502	Semi-Flushing Bezel – MX-5000
MXM-508	Glazed Door Kit – medium
MXM-508Z	Glazed Door Kit – medium (double aperture)
MXM-523-BB	Spare Back Box
MXM-523-D1	Spare Door
MXM-523-D2	Spare Door (c/w zone aperture)
MXM-523-CP	Spare Chassis Mounting Plate

Large/Deep Enclosure Spares	
MXM-503	Semi-Flushing Bezel – MX-5000
MXM-507	Glazed Door Kit – large/deep
MXM-507Z	Glazed Door Kit – large/deep (double aperture)
MXM-524-BB	Spare Back Box
MXM-525-BB	Spare Back Box – deep enclosure
MXM-524-D1	Spare Door
MXM-524-D2	Spare Door – c/w zone aperture
MXM-524-D3	Spare Door – c/w 2 x switch apertures
MXM-524-D4	Mimic Door with Single Aperture
MXM-524-D5	Blank Door
MXM-524-CP	Spare Chassis Mounting Plate

Extended Enclosure Spares	
MXM-536	Semi-Flushing Bezel
MXM-538-D1	Glazed Door Kit – extended (zone aperture)
MXM-538-D2	Glazed Door Kit – extended (2 x glazed apertures)
MXM-538-D3	Glazed Door Kit – extended (mimic aperture)
MXM-537-BB	Spare Back Box
MXM-537-D1	Spare Door
MXM-537-D2	Spare Panel Door with Mimic Aperture
MXM-537-BP	Blank Plate for Zone LED Aperture

Repeater Enclosure Spares	
MXM-521	Semi-Flushing Bezel – MX-5010 / 5020
MXM-509	Semi-Flushing Bezel – MX-5030 RCT – large
MXM-543-BB	Spare back-box – MX-5010 / 5020
MXM-544-BB	Spare back-box – MX-5030 RCT – large
MXM-543-D1	Spare panel cover – MX-5010 / 5020
MXM-543-D2	Spare panel cover + K/S app – MX-5010 / 5020
MXM-544-D1	Spare panel cover – MX-5030 RCT – large
MXM-544-D2	Spare panel cover + K/S app – MX-5030 RCT – large

Product Code	Description
Other Enclosure Spares	
MXM-516	Battery (18Ah) / Utility Enclosure – medium
MXM-517	Battery (18Ah) / Utility Enclosure – large
MXM-546	Battery (45Ah) Enclosure – deep
MXM-518	Utility Enclosure – deep
MXM-519	Chassis mounting plate for Utility Enclosure (3 cards)
MXM-531	Document Enclosure – medium
MXM-532	Document Enclosure – large
MXM-533	Modem/ESPA/BMS Interface Enclosure
MXM-504	Termination Enclosure – medium
MXM-505	Termination Enclosure – large
MXM-506	Termination Enclosure – deep
MXM-530	Cable Clamp

Small Enclosure Special Finishes	
MXM-501-SSB	Semi-Flushing Bezel – stainless steel brushed
MXM-522-D1-SSB*	Spare Door – stainless steel brushed
MXM-522-BB-SSB	Spare Back Box – for use with stainless steel door (MW334E)
* Add F for fitted	

Medium Enclosure Special Finishes	
MXM-502-SSB	Semi-Flushing Bezel – stainless steel brushed
MXM-523-D1-SSB*	Spare Door. Stainless steel brushed
MXM-523-D2-SSB*	Spare Door (c/w Zone Aperture) – stainless steel brushed
MXM-523-BB-SSB	Spare Back box for use w stainless steel door (MW334E)
* Add F for fitted	

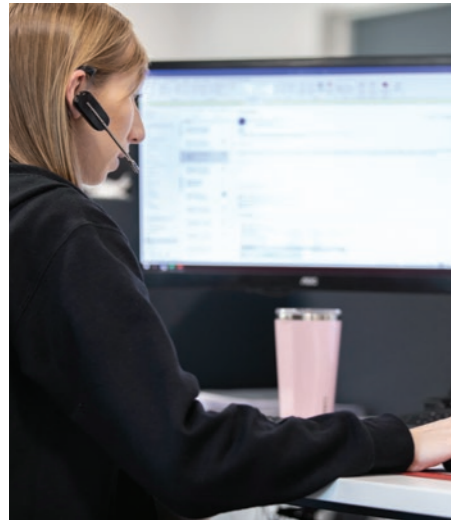
Large/Deep Enclosure Special Finishes	
MXM-503-SSB	Semi-Flushing Bezel – stainless steel brushed
MXM-524-D1-SSB*	Spare Door – stainless steel brushed
MXM-524-D2-SSB*	Spare Door (c/w Zone Aperture) – stainless steel brushed
MXM-524-BB-SSB	Spare Back Box – for use with stainless steel door (MW334E)
* Add F for fitted	

Repeater Enclosure Special Finishes	
MXM-521-SSB	Semi-Flushing Bezel – MX-5010/5020 (stainless steel brushed)
MXM-509-SSB	Semi-Flushing Bezel – MX-5030 Large RCT (stainless steel brushed)
MXM-543-D1-SSB	Panel Cover – MX-5010/5020 (stainless steel brushed)
MXM-543-D2-SSB	Panel Cover & Key Switch Aperture – MX-5010/5020 (stainless steel brushed)
MXM-544-D1-SSB	Panel Cover – MX-5030 Large RCT (stainless steel brushed)
MXM-544-D2-SSB	Panel Cover & Key Switch Aperture – MX-5030 large RCT (stainless steel brushed)

Product Code	Description
Rack Mount Panels	
MX-5101R	1-Loop Fire Panel – Apollo/Hochiki
MX-5201R	1-2 Loop Fire Panel c/w 1 Loop Card – Apollo/Hochiki
MX-5401R	1-4 Loop Fire Panel c/w 1 Loop Card – Apollo/Hochiki
MX-5101AR	1-Loop Fire Panel - Apollo Core Protocol
MX-5201AR	1-2 Loop Fire Panel c/w 1 Loop Card – Apollo Core Protocol
MX-5401AR	1-4 Loop Fire Panel c/w 1 Loop Card – Apollo Core Protocol
MX-5101VR	1-Loop Fire Panel – Argus
MX-5201VR	1-2 Loop Fire Panel c/w 1 Loop Card – Argus
MX-5401VR	1-4 Loop Fire Panel c/w 1 Loop Card – Argus
MX-5101NR	1-Loop Fire Panel – Nittan
MX-5201NR	1-2 Loop Fire Panel c/w 1 Loop card – Nittan
MX-5401NR	1-4 Loop Fire Panel c/w 1 Loop card – Nittan

Rack Mount LED Indication	
MXP-513R-050RD	4U LED Card 50 Zone Fire (red)
MXP-513R-050RY	4U LED Card 50 Zone Fire (red) + Fault (yellow)
MXP-513R-050YL	4U LED Card 50 Zone Fault (yellow)
MXP-513R-100RD	4U LED Card 100 Zone Fire (red)
MXP-513R-100RY	4U LED Card 100 Zone Fire (red) + Fault (yellow)
MXP-513R-100YL	4U LED Card 100 Zone Fault (yellow)
MXP-513R-200RY	4U LED Card 200 Zone Fire (red) + Fault (yellow)
MXP-513R-050CRY	4U LED Card 50 Zone Column Format – Fire (red) + Fault (yellow)
MXP-513R-050CRYG	4U LED Card 50 Zone Column Format (30 x red/yellow and 20 x green/yellow)

Rack Mount Spares	
MXM-510-16U	IP55 19" Rack Mount Enclosure – 16U high
MXM-510-20U	IP55 19" Rack Mount Enclosure – 20U high
MXM-510-KL	CAM Key-Lock Kit for Outer Door
MXM-510-BS	Battery Shelf
MXM-510-BS1	Battery Shelf Lower
MXM-510-CP	Chassis Plate
MXM-511-1U	Blanking Plate – 1U
MXM-511-2U	Blanking Plate – 2U
MXM-511-3U	Blanking Plate – 3U
MXM-511-4U	Blanking Plate – 4U
MXM-511-5U	Blanking Plate – 5U
MXM-511-6U	Blanking Plate – 6U
MXM-511-7U	Blanking Plate – 7U
MXM-511-8U	Blanking Plate – 8U
MXM-511-9U	Blanking Plate – 9U
MXM-511-1U-TOP	Blanking Plate – 1U-TOP
MXM-512	Blanking LED Plate – 4U
MXM-513-BB	6U Back Box
MXM-515-6U	6U Chassis Plate
MXM-513-D1	6U Door D1 Blank
MXM-513-D2	6U Door D2 LED
MXM-513-D3	6U Door D1 c/w Aperture
MXM-513-BP	6U Switch/LED Blank Plate
MXM-513-MF	6U Switch/LED Mounting Frame
MXM-513-FP	6U Fascia Plate Blank
MXM-514-BB	8U Back Box
MXM-515-8U	8U Chassis Plate
MXM-514-D1	8U Door D1 c/w Aperture
MXM-514-FP	8U Fascia Plate Blank
MXM-535-D1	13U Hinged Door – for 9 x MXP-538 or blank plates



Join us in
Creating a safer future
 with **FREE** training and support



Technical support

Highly rated customer support. Available by telephone and online.

As an Advanced customer, you have access to a host of helpful advice and support.

This includes a wealth of online information, from 'how to' videos to datasheets and detailed product manuals. Simply complete one of our online forms and you'll be able to access a range of additional services, previously available to those with an Advanced360 account.

Services include:

- **Technical support** – available by telephone and online by raising a support ticket, which one of our experienced technical support engineers will answer.
- **Training** – direct customers can book training online and will be sent training certificates by email. If you need to access a previous training certificate, simply complete an online request form. All non-direct customers should book training through their distributor.



- **Software** – download software and save your software packages by installation/site.
- **Literature** – download manuals, specifications, approved partner certificates, technical information and more.
- **Warranty** – download our warranty statement.



advancedco.com/training-support

To ensure you're getting maximum benefit from all your Advanced products, we offer comprehensive training and support:

- **Regular CPDs on:**
 - False alarm management
 - BS 8629 evacuation alert systems
 - Emergency lighting
- Access to in-person and online **product training**
- 24-hour-access to **'How-to' films** covering popular topics

Book your free CPD place



Enquire about training



Access support films



Advanced – made in the UK. Trusted around the world.

Discover more: advancedco.com | enquiries@advancedco.com | +44 (0)345 894 7000



Email: enquiries@advancedco.com
Web: www.advancedco.com



MxPro 5 and all other Advanced product brands are trademarks of Advanced Electronics Ltd. All rights reserved



A **Halma** company