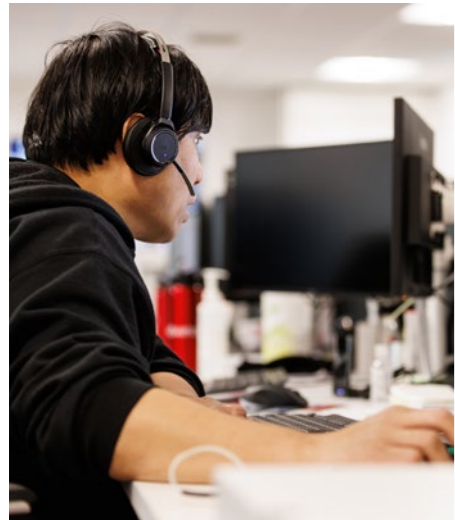




# QuickZone

Conventional &  
Twin-wire Fire Panel





# Contents

About Advanced	3
QuickZone & QuickZone XL	4
Panel Overview	5
False Alarm Management	6
Programming Features	6
AdSpecials	7
QuickZone Product List	7

## Advanced – Made in the UK. Trusted around the world

# Technical support

Highly-rated support. Available by telephone and online.

As an Advanced customer, you have access to a host of helpful advice and support.

This includes a wealth of online information, from 'how to' videos to datasheets and detailed product manuals. Simply complete one of our online forms and you'll be able to access a range of additional services, previously available to those with an Advanced360 account.

### Services include:

- **Technical support** – available by telephone and online by raising a support ticket, which one of our experienced technical support engineers will answer.
- **Training** – direct customers can book training online and will be sent training certificates by email. If you need to access a previous training certificate, simply complete an online request form. All non-direct customers should book training through their distributor.



- **Software** – download software and save your software packages by installation/site.
- **Literature** – download manuals, specifications, approved partner certificates, technical information and more.
- **Warranty** – download our warranty statement.



[advancedco.com/training-support](http://advancedco.com/training-support)

At Advanced, we're committed to creating a safer future. We deliver fire protection and life safety solutions that protect people and property in more than 80 countries across the globe.

standards – which is why Advanced products are trusted by customers the world over and synonymous with **quality, performance** and **ease of use**.

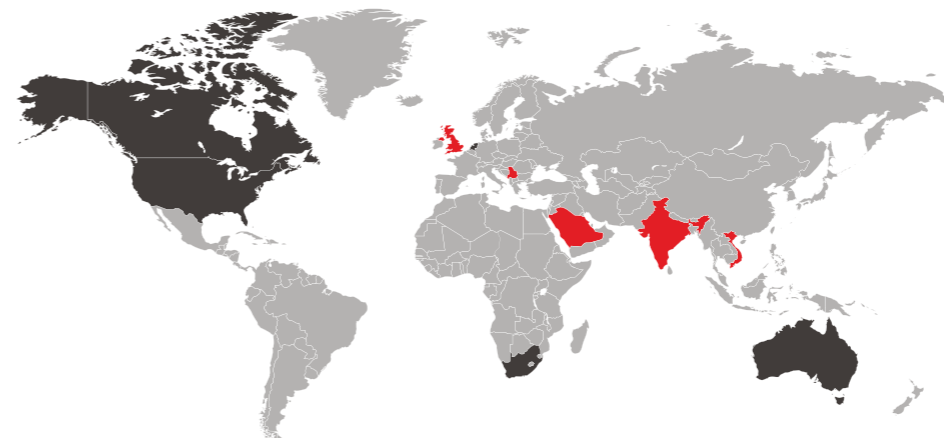
We understand that few fire protection challenges are the same, so as well as our mass-customised ranges, we also offer fully-customised solutions. This flexibility gives you complete control over the functions, format and finish of products to suit your site's unique specification.

We are dedicated to providing excellent service and have an international network of offices and agents to help you access sales support with ease – wherever you are in the world. In addition, our training and technical services are free of charge to all our direct customers and consistently rated as excellent.

For added reassurance, Advanced is part of the safety sector of FTSE 100 company Halma plc. This global group of life-saving technology companies has a clear purpose to grow a safer, cleaner, healthier future for everyone, every day.

**Our products are shaped by decades of research and development expertise as well as ongoing investment in new technologies. This ensures they provide years of high performance and reliability – for ultimate peace of mind.**

Everything we deliver is rigorously tested and approved to exacting quality



Advanced & Halma sales representatives

Strategic and OEM partners

Distributors and system integrators in key locations worldwide



# QuickZone

## The Advanced Conventional and Twin-wire Fire Panel.

Robust, reliable fire protection for all sites where a conventional solution is specified.



QuickZone and QuickZone XL fire panels support 2-32 zones, are approved to EN54 Parts 2&4 and deliver a host of performance, configuration and programming features.

A QuickZone system, as the name suggests, is quick and simple to install and manage.

QuickZone's standard and XL panel formats allow absolutely the best solution to be selected and make it ideal for any installation where a conventional panel is required.



### Quick on the Wall

- Sturdy metal enclosure
- Multiple knockouts
- Easy-change PCBs
- Ample space for wiring
- Integral, switch mode, 1.25/2.5/5.0 Amp PSU
- Simple access to batteries
- Metal earth bar (no crimping)
- No end-of-line modules required
- Compatible with a wide range of conventional detectors

### Quick to Configure

- Up to 32 fire zones
- DIL switch selection of twin-wire/conventional format
- 2 open collector outputs
- 2 volt-free contacts
- 28V output
- Zone interface function allows last zone to be set via DIL for non-latching operation
- 2 inputs (class change and alert)
- Up to 6 sounder circuits
- Spare zones can be used as sounder circuits
- Common fire output and relay can be programmed to cancel on silence
- Modular expansion zone cards available
- XL system includes repeater panel

### Quick to Maintain

- Simple, clear LED indication of fire, system status and zone status
- One-button fault diagnosis
- Colour-coded keypad to manage Resound, Silence, Reset, Test, Disable, Mute and Test Lamps
- Simple 3 level programming accessible by keyswitch or keycode and DIL
- Disablements removed with one code
- Factory reset option
- 3 button action to disable zones
- Buzzer mute in fault condition
- In test mode, tests can be run with or without sounders
- False alarm management
- 40 event log (XL only)
- Full, industry-leading technical support from Advanced
- 3 year warranty

# Panel Overview

Advanced's QuickZone solution offers eight panels across two product lines that allows installers to specify the system that matches their performance and price requirements.

QuickZone is the most straightforward panel in the range and is appropriate for quick, simpler installations. QuickZone XL is a feature-rich panel that can support passive or fully functional repeaters and is ideal for larger conventional/twin-wire installations with more involved programming and configuration requirements.

## QuickZone



- 2 or 4 zones
- DIL selectable conventional or twin-wire (sav-wire) set up
- Class change and alert inputs
- Fire and fault relays
- 2 monitored sounder circuits
- 1.25 Amp switch mode PSU
- Space for up to 3.2Ah batteries
- False alarm management
- Approved to EN54 Parts 2&4
- 3 year warranty

## QuickZone XL



- 4-12/16-32 zone options
- 4-12 zone panels DIL selectable for twin-wire (sav-wire) operations
- Integral 2.5/5 Amp switch mode PSU
- Up to 7/18 Ah batteries
- Class change and alert programmable inputs
- Programmable relays and outputs
- Up to 6/4 monitored sounder circuits
- Integral detector removal monitoring
- Test mode (with and without sounders)
- Alarm load of 2.4A shared across all sounder outputs
- Modular expansion zone cards available (4-12 zone only)
- 2 additional sounder circuits with expansion card (4-12 zone only)
- False alarm management
- Zonal programming
- Programmable outputs
- Programmable output delays
- Supports up to 8 QuickZone XL repeater panels
- Approved to EN54 Parts 2&4
- 3 year warranty

## QuickZone XL Repeater



- Same easy-to-use controls and indications as panel
- Can be fully functional or passive
- 12 zonal fault and fire indication
- 1.25 Amp integral PSU
- Class change and alert input
- Test mode and disablement functions
- Up to 8 per main panel
- Approved to EN54 Parts 2&4
- 3 year warranty



# False Alarm Management

QuickZone false alarm management functions according to one of three different modes as described in EN54-2.

QuickZone supports mode A while QuickZone XL supports all three modes. False alarm management can be selected for individual zones on both panels.

## Mode A:

The first alarm is not indicated and the sounders do not activate. The panel resets and rechecks the zone within 15-30 seconds. If an alarm is detected the panel activates a full fire condition. Any new alarm from the same or a different zone within 30 minutes also activates a full fire condition.

## Mode B:

The first alarm will indicate at the panel but the sounders do not activate. The panel resets and rechecks the zone within a programmable time period (1 – 4 minutes). If an alarm is detected the panel activates a full fire condition. Any new alarm from the same or a different zone within a second programmable time period of 5 to 30 minutes will also activate a full fire condition unless the reset button is pressed.

## Mode C:

The first alarm will indicate at the panel but the sounders do not activate. The panel will not activate a full fire condition unless a second device is activated in the same or a different zone.

# Programming Features

## Zone Function Programming:

To maximise configuration options, QuickZone allows individual zones to have specific programmed options including:

- Set as latching or non-latching
- Short circuit = Fire for monitoring
- Specified for MTL5061 I.S. barrier compatibility
- Compatible with schottky or zener diode bases
- False alarm management modes
- Set delays to outputs
- Silent mode for indication purposes - visual and audible alarm at panel but no sounder operation
- Detector removal monitoring can be turned off for older non-approved detectors (non-compliant to EN54)
- Twin wire zone can be programmed to zone of origin continuous ringing. Other zones can be set to pulsing, silence or continuous



## Inputs:

- Two independent programmable inputs - class change and alert input
- Either or both inputs can be programmed for remote evacuation, remote silence alarm or remote reset
- Inputs programmable for indication purposes so the zone 12/32 LED or fault LED will illuminate
- Two additional programmable inputs (remote reset & remote silence alarms), are available on the 16-32 zone panels

## Outputs:

- Can be set to latching
- Fault outputs can be inverted
- Aux relays and all outputs, including sounders, are independently programmable:
  - On, off or pulsing
  - Programmed to a dedicated zone
  - Programmed with a custom response to silence alarm, evacuate, class change input, alert input or during zone delay
- Other sounders can be switched off, pulsing or continuous
- Output delays can be applied to aux outputs and sounders (for example investigation delay for false alarm management)

# Custom-built panels

Advanced fire panels designed and manufactured to your specifications.

When you're facing a complex fire protection challenge, our AdSpecials team will work with you to design and manufacture customised fire panels, control interfaces and enclosures to meet the needs of your site.

The scope of customisation ranges from simple colour coordination to fully bespoke panel housings that offer environmental protection and specialist control and indication.



Contact us on 0345 8947000 or email enquiries@advancedco.com to discuss your requirements

# QuickZone Product List

Product Code	Description
<b>QuickZone</b>	
QZ-2	QuickZone - 2 Zone Panel
QZ-4	QuickZone - 4 Zone Panel
<b>QuickZone XL</b>	
QZXL-4	QuickZone XL - 4 Zone Panel
QZXL-8HS	QuickZone XL - 8 Zone Panel (c/w additional - 2 sounder outputs, 2 switched -ve outputs & 1 aux c/o relay)
QZXL-12HS	QuickZone XL - 12 Zone Panel (c/w additional - 2 sounder outputs, 2 switched -ve outputs & 1 aux c/o relay)
QZXL-16	QuickZone XL - 16 Zone Panel
QZXL-24	QuickZone XL - 24 Zone Panel
QZXL-32	QuickZone XL - 32 Zone Panel

Product Code	Description
<b>QuickZone XL Expansion Cards</b>	
QZXL-ZEC	QuickZone XL - 4 Zone expander Card
QZXL-HSSEC	QuickZone XL - 4 Zone expander Card (c/w additional - 2 sounder outputs, 2 switched -ve outputs & 1 aux c/o relay)
<b>QuickZone XL Repeater Panel</b>	
QZXL-R12	QuickZone XL - Repeater 12 Zone



**Email:** [enquiries@advancedco.com](mailto:enquiries@advancedco.com)  
**Web:** [www.advancedco.com](http://www.advancedco.com)



QuickZone and all other Advanced product brands are trademarks of Advanced Electronics Ltd. All rights reserved



A **Halma** company