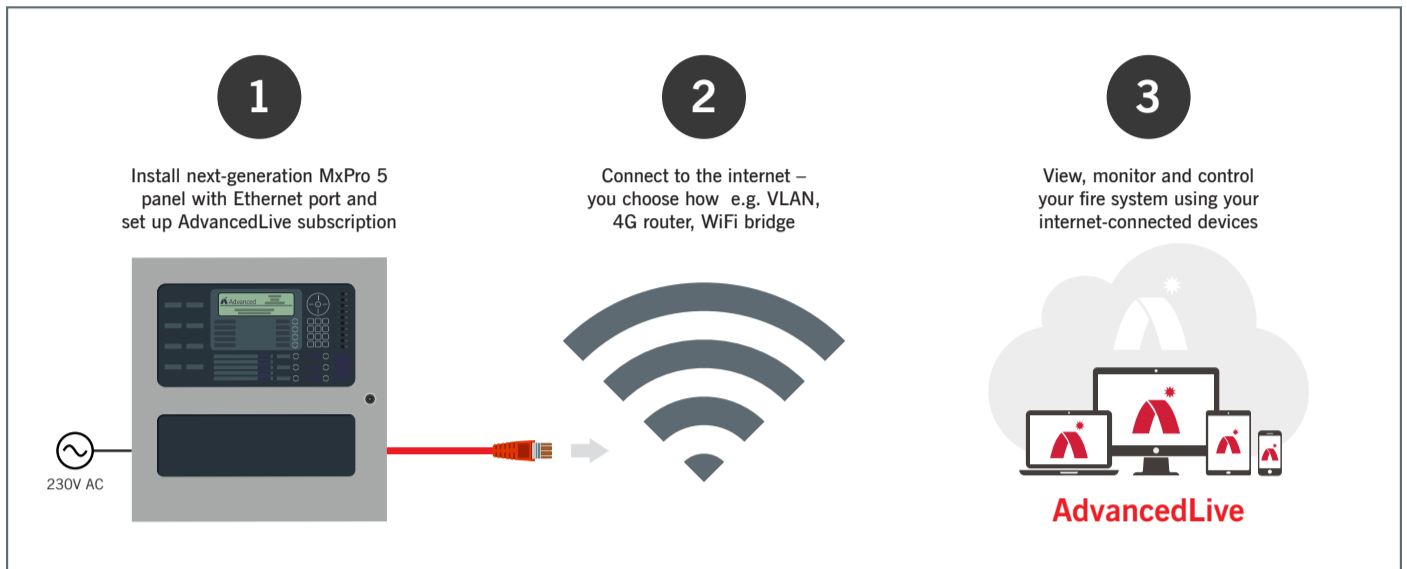


Simple steps to connect to AdvancedLive



The next-generation MxPro 5 panels allow easy AdvancedLive connectivity. Set up your AdvancedLive subscription, plug in the Ethernet cable, and in a few simple steps you'll be able to monitor and control your Advanced fire system anytime, anywhere on any device.



1. AdvancedLive subscription

- Set up your AdvancedLive annual subscription via an Advanced sales manager or customerservices@advancedco.com or by calling **0345 894 7000**

2. Mounting and configuration

- The installer securely mounts the next-generation 'Gen 2' MxPro 5 on the wall and configures it as a fire panel. The panel is connected to an Ethernet point using the Ethernet port on the panel (cable not supplied).

3. Automatic connection to AdvancedCloud

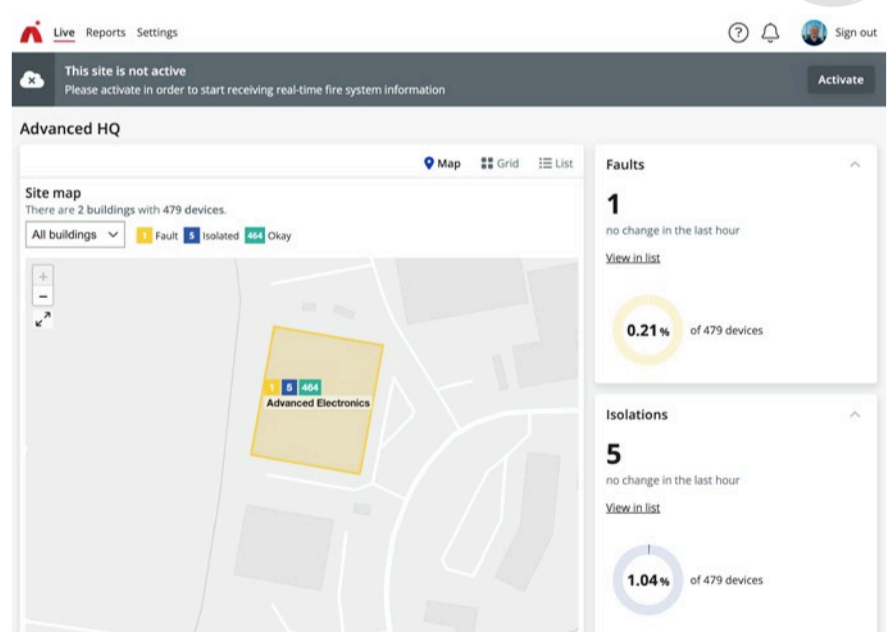
- The panel will automatically connect to AdvancedCloud if static IP configuration is not required. *(Full details about connection are available in our 'Information for IT Managers' document.)*

4. Accessing AdvancedLive

- As long as an active AdvancedLive subscription is in place, you can now access your account/site.

5. Activating AdvancedLive

- Within AdvancedLive, there is a banner containing an 'Activate' button.
- Click this button to initiate a guided activation process.
- The process verifies the installer's physical access to the panel (Level 3) and their permission to access AdvancedLive (similar to connecting a smart TV to a streaming service).



6. Entering activation token

- On the MxPro 5 panel, in the Level 3 commissioning menu, select 'Activate'.
- The panel will display an activation token.
- Enter this token in the AdvancedLive interface and click 'Activate'.
- AdvancedLive will synchronise the physical site with the virtual site, and the installer will be notified that the site can now be viewed.

